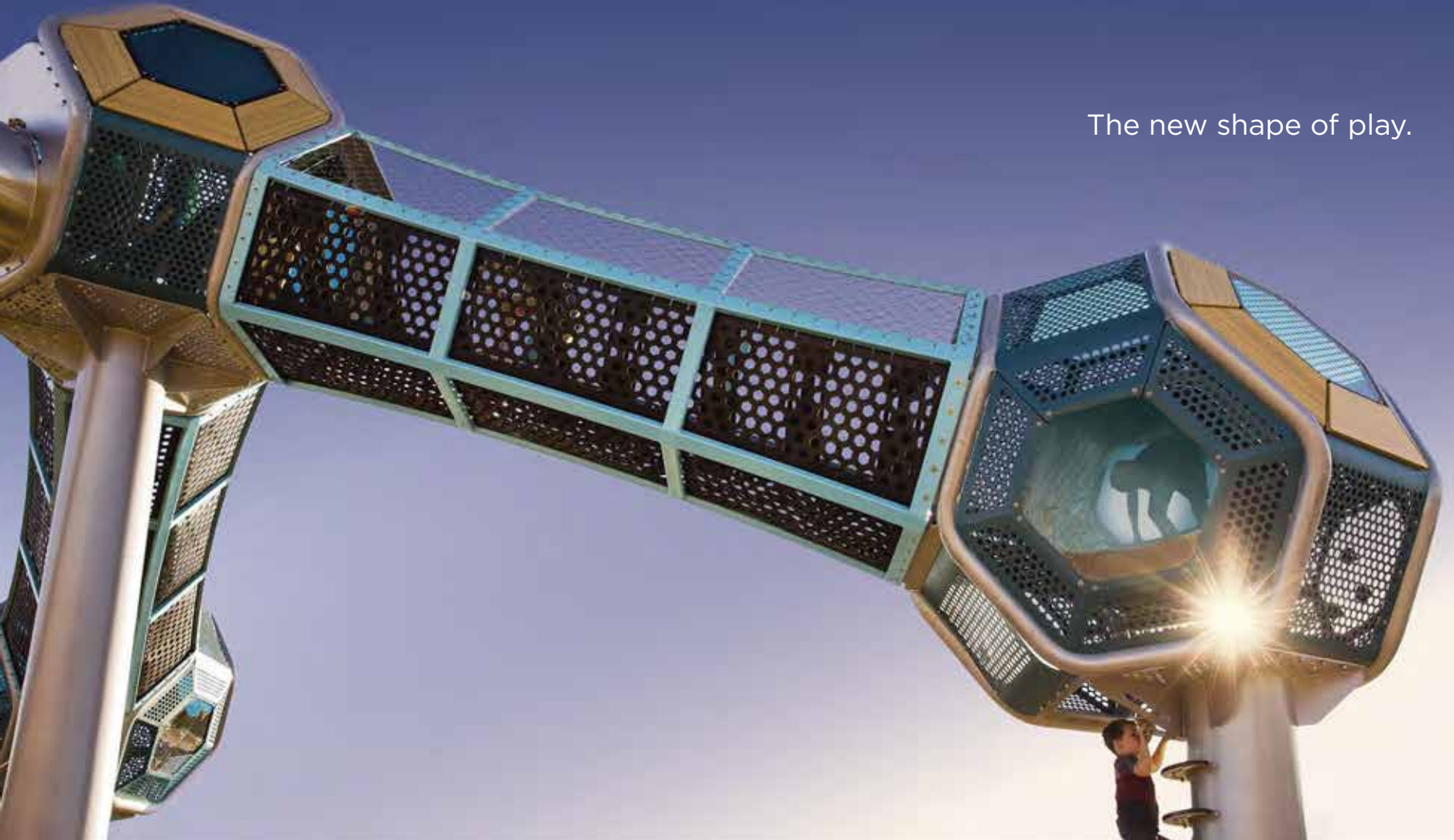


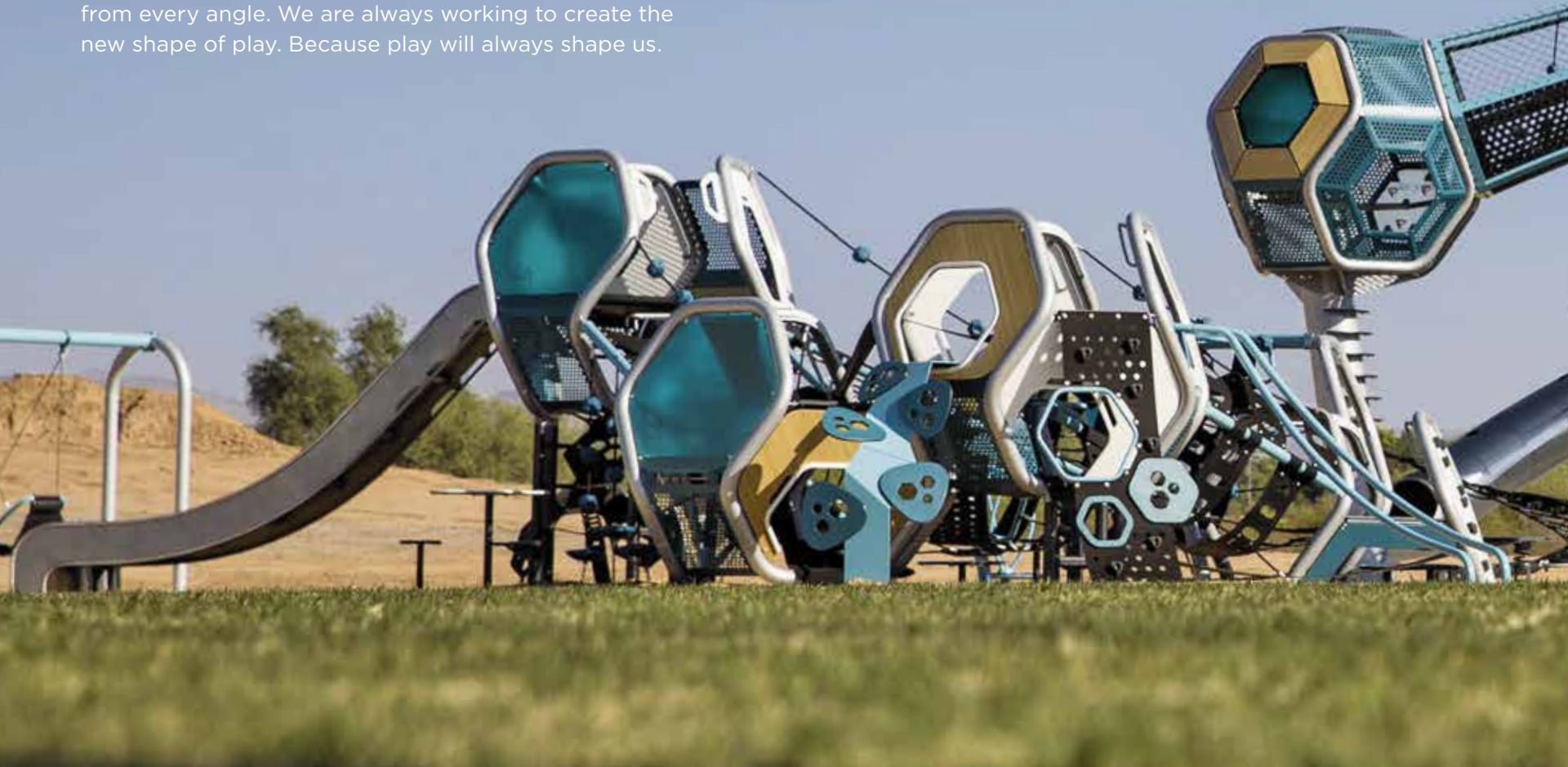
Sm

The new shape of play.



Because play will always shape us.

Play is the universal language of fun, of collaboration, of growing. Play is key to helping kids become better adults. So we create playstructures to amaze and inspire, challenge and empower, promote empathy and pride. We create playstructures that are design-focused and packed with play value to give every child every opportunity to play from every angle. We are always working to create the new shape of play. Because play will always shape us.



New Products	2
Featured Designs	10
5-12 Years	38
2-5 Years	78
6-23 Months	92
Play Components	97

NEW

The unique geometric configuration and continuous circuits create a hive of evolving play that encourages exploration. Kids enjoy novel play experiences, time after time.



Hedra™
Ages 5-12
Patent pending



Hedra™ Scout
Ages 2-5
Patent pending



Introduce young players to the many benefits of dynamic play. Developmentally appropriate activities populate this geometric circuit of continuous exploration.



Hedra™ Color Palettes

Our Hedra collection comes in three curated palettes, making it easy for you to choose a style that fits your needs.



Palette BU



Palette BV



Palette BW

Super Netplex®
Ages 5-12



Super Netplex 12-foot Double Towers

We took the most popular Netplex® components and brought them to new heights! Children of varying abilities can touch the sky at peaks up to 12 feet high, plus enjoy the mix of opportunities to climb, spin, bounce or hang out. Choose from four preconfigured Super Netplex designs for a super addition to your playground.



Super Netplex 8- and 12-foot Towers



Super Netplex 12-foot Tower



Super Netplex 8-foot Tower

PLAYSTRUCTURES

Featured Designs





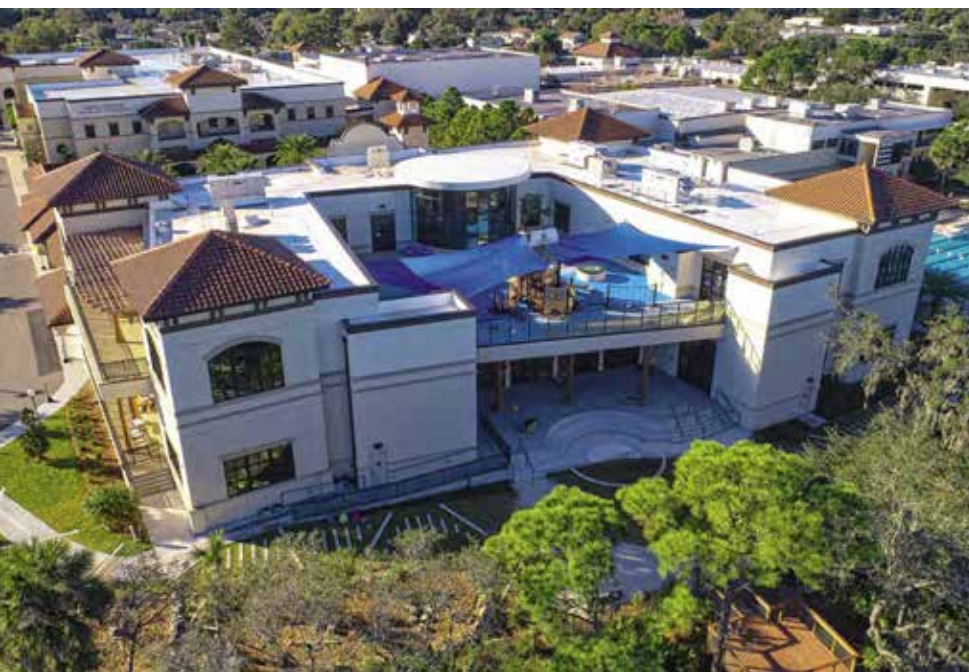
Jake's Place
Delran, New Jersey





Berkeley Preparatory School
Tampa, Florida









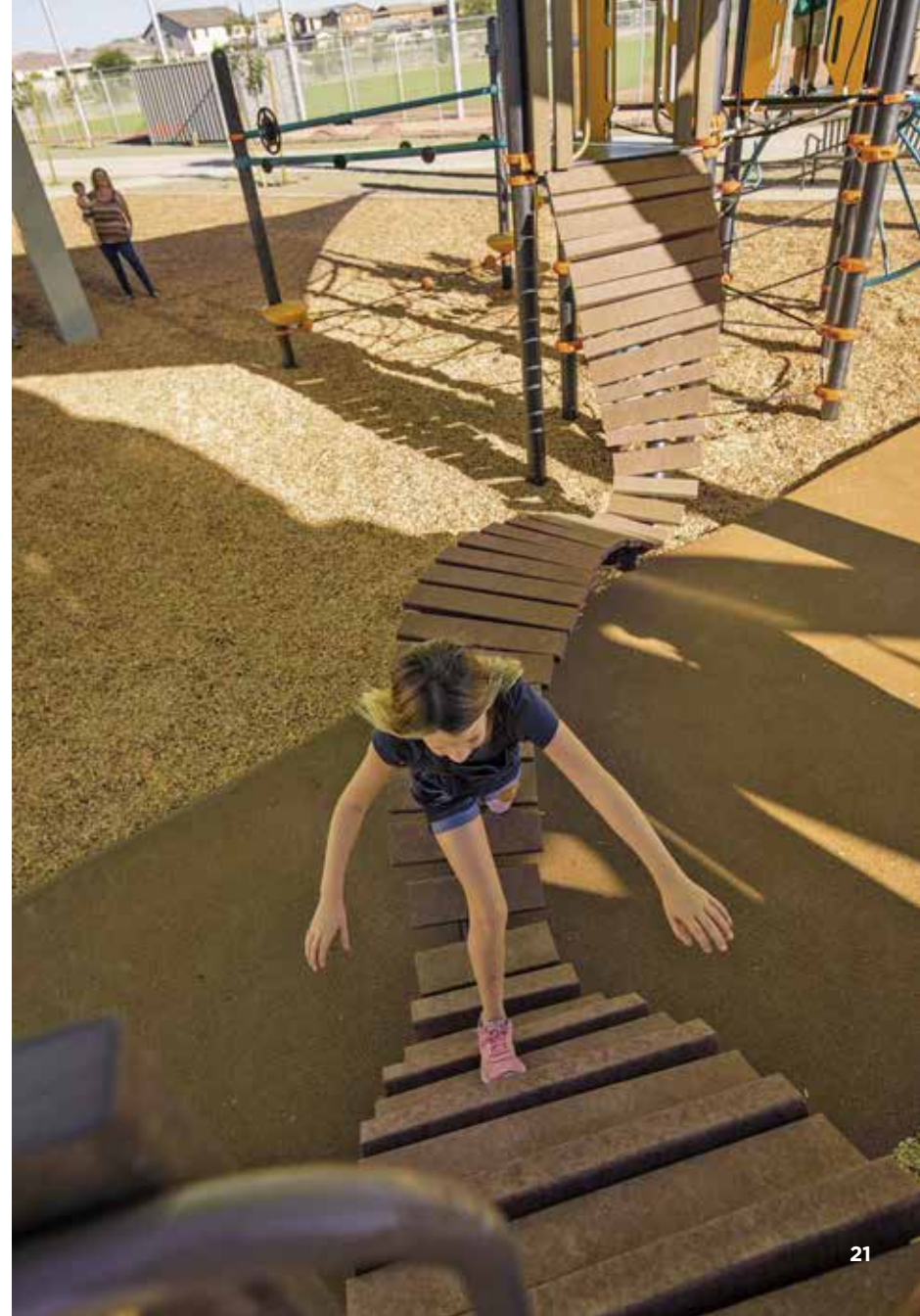
Clement Park
Littleton, Colorado





Eastmark Great Park
Mesa, Arizona





Lincoln Heights Recreation Center
Los Angeles, California





Griffith Park
Los Angeles, California



Inclusion Matters® by Shane's Inspiration is an international nonprofit dedicated to creating social inclusion for children with disabilities through the creation of inclusive play environments and educational programming. Landscape Structures is proud to partner in this vision, which fosters a bias-free world among children of all abilities.





Signal Butte Park
Mesa, Arizona





Belmont Park
Calgary, Alberta, Canada





Gilbert Regional Park
Gilbert, Arizona





Maple Park
Glendale, California



Inclusion Matters® by Shane's Inspiration is an international nonprofit dedicated to creating social inclusion for children with disabilities through the creation of inclusive play environments and educational programming. Landscape Structures is proud to partner in this vision, which fosters a bias-free world among children of all abilities.



Burrus Old Mill Park
Blue Springs, Missouri





Kammerer Park
Elk Grove, California





PLAYSTRUCTURES

5-12 Years



**Jumpstart
Bon départ**

Canadian Tire Jumpstart Charities helps kids overcome financial and accessibility barriers to sport and recreation in an effort to provide inclusive play for kids of all abilities. Landscape Structures is proud to partner in this vision and goal: Canada, where all kids have a chance to fulfill their dreams.

Jumpstart Playground — Shouldice Park
Calgary, Alberta, Canada
PlayBooster®
• Minimum area 115' x 96' (35,05 m x 29,26 m) CSA

AGES 5-12



Louis S. Wolk JCC of Greater Rochester
Rochester, New York
Alpha® Tower and Crab Trap®
• Minimum area 72' x 43' (21,95 m x 13,11 m) ASTM





Garrison Park

Crossville, Tennessee

PlayBooster® Netplex®

• Minimum area 58' x 46' (17,68 m x 14,02 m) ASTM





Glamorgan Park

Scarborough, Ontario, Canada

PlayBooster®

• Minimum area 50' x 35' (15,24 m x 10,67 m) CSA



play matters for all kids

We're proud to be KaBOOM!'s Partner in Play. KaBOOM! is the national nonprofit dedicated to giving all kids the childhood they deserve through great, safe places to play. Since 1996, KaBOOM! has collaborated with partners to build, open or improve more than 17,000 playspaces, engaged more than one million volunteers, and served more than 9 million kids. KaBOOM! creates places to play, inspires communities to promote and support play, and works to drive the national discussion about the importance of play in fostering healthy and productive lives. To learn why a #PLAYceforKids matters, visit kaboom.org or join the conversation at twitter.com/kaboom or facebook.com/kaboom.



Thorpe Park

Flagstaff, Arizona

Evos® Eclipse® Net Plus

• Minimum area 52' x 46' (15,85 m x 14,02 m) ASTM





Oak Elm Park
Windsor, Ontario, Canada
PlayBooster®
• Minimum area 40' x 36' (12,19 m x 10,97 m) CSA

AGES 5-12

Glenview Elementary

Prince George, British Columbia, Canada

PlayBooster®

• Minimum area 61' x 44' (18,59 m x 13,41 m) CSA





AGES 5-12

Calf Pasture Park

Cedar Hill, Texas

PlayBooster®

• Minimum area 47' x 42' (14,33 m x 12,80 m) ASTM





Rabanus Park

Fargo, North Dakota

PlayBooster®

- Minimum area 42' x 34' (12,80 m x 10,36 m) ASTM

AGES 5-12

AGES 5-12

L'Hospitalet — Parc de Les Planes

AMB - Barcelona, Spain

Smart Play® Venti®

• Minimum area 45' x 40' (13,72 m x 12,19 m) EN





Legacy Park

Fargo, North Dakota

PlayBooster®

- Minimum area 38' x 34' (11,58 m x 10,36 m) ASTM





Purden Provincial Park
Prince George, British Columbia, Canada
PlayBooster®
• Minimum area 49' x 49' (14,94 m x 14,94 m) CSA

AGES 5-12





Cherry View Elementary School
Lakeville, Minnesota
PlayBooster®
• Minimum area 68' x 50' (20,72 m x 15,24 m) ASTM

AGES 5-12

Monticello Miracle League

Monticello, Arkansas

PlayBooster®

- Minimum area 53' x 37' (16,15 m x 11,28 m) ASTM



The Miracle League builds accessible baseball fields to give all children a chance to play ball. Through our partnership, Landscape Structures installs inclusive playgrounds as part of Miracle League baseball complexes, creating an engaging experience for kids of all ages and abilities.





Peter Pan Park

Emporia, Kansas

PlayBooster®

- Minimum area 56' x 55' (17,07 m x 16,76 m) ASTM





AGES 5-12

The Parks of Harvest Hills

Calgary, Alberta, Canada

PlayBooster® Netplex®

• Minimum area 65' x 64' (19,81 m x 19,51 m) CSA





AGES 5-12

Ralph V. Chisholm Regional Park
St. Cloud, Florida

PlayBooster®

- Minimum area 62' x 41' (18,90 m x 12,50 m) ASTM





Zayed Higher Organization
Mafraq, Abu Dhabi, UAE
PlayBooster®
• Minimum area 44' x 41' (13,41 m x 12,50 m) ASTM

AGES 5-12

Playground Park

Junction City, Kansas

PlayOdyssey® Tower and Alpha® Tower

• Minimum area 88' x 54' (26,82 m x 16,46 m) ASTM





Global Academy

New Brighton, Minnesota

PlayBooster®

- Minimum area 42' x 39' (12,80 m x 11,89 m) ASTM



play matters for all kids

We're proud to be KaBOOM!'s Partner in Play. KaBOOM! is the national nonprofit dedicated to giving all kids the childhood they deserve through great, safe places to play. Since 1996, KaBOOM! has collaborated with partners to build, open or improve more than 17,000 playspaces, engaged more than one million volunteers, and served more than 9 million kids. KaBOOM! creates places to play, inspires communities to promote and support play, and works to drive the national discussion about the importance of play in fostering healthy and productive lives. To learn why a #PLAYceforKids matters, visit kaboom.org or join the conversation at twitter.com/kaboom or facebook.com/kaboom.



Townley Park
Peoria, Arizona
PlayBooster®
• Minimum area 33' x 30' (10,06 m x 9,14 m) ASTM

AGES 5-12

Liberty Arts Academy

Mesa, Arizona

PlayBooster®

- Minimum area 48' x 40' (14,63 m x 12,19 m) ASTM



We're proud to be KaBOOM!'s Partner in Play. KaBOOM! is the national nonprofit dedicated to giving all kids the childhood they deserve through great, safe places to play. Since 1996, KaBOOM! has collaborated with partners to build, open or improve more than 17,000 playspaces, engaged more than one million volunteers, and served more than 9 million kids. KaBOOM! creates places to play, inspires communities to promote and support play, and works to drive the national discussion about the importance of play in fostering healthy and productive lives. To learn why a #PLAYceforKids matters, visit kaboom.org or join the conversation at twitter.com/kaboom or facebook.com/kaboom.







Willow Park Elementary School

Fargo, North Dakota

PlayBooster®

- Minimum area 69' x 53' (21,03 m x 16,15 m) ASTM

AGES 5-12

AGES 5-12

Cottonwood Park

Colorado City, Arizona

PlayBooster®

- Minimum area 51' x 42' (15,54 m x 12,80 m) ASTM



Woodland Hills Recreation Center

Woodland Hills, California

PlayBooster®

• Minimum area 46' x 45' (14,02 m x 13,72 m) ASTM

AGES 5-12



AGES 5-12

Discovery Park

Meridian, Idaho

PlayBooster®

• Minimum area 77' x 50' (23,47 m x 15,24 m) ASTM

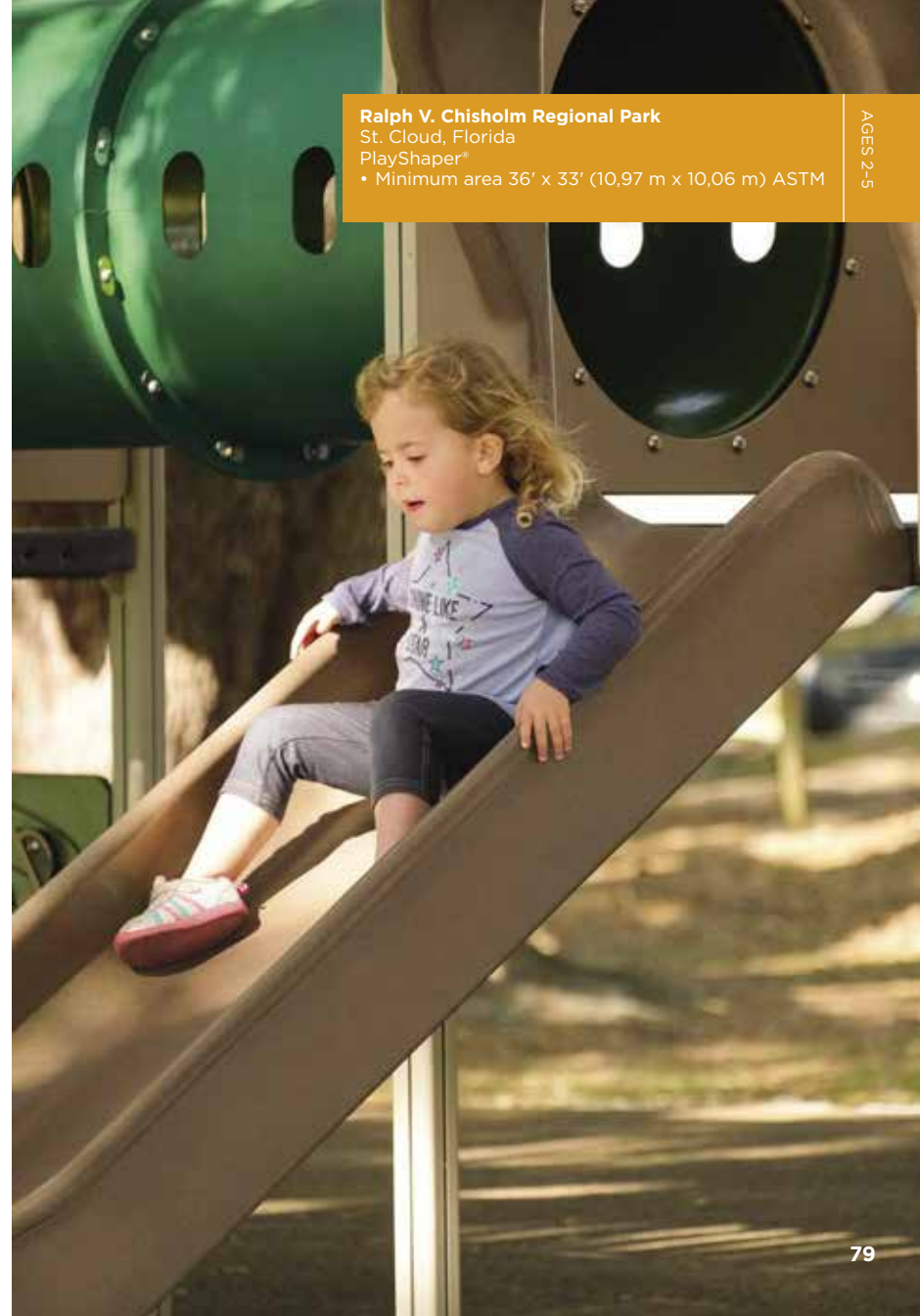




PLAYSTRUCTURES

2-5 Years





Ralph V. Chisholm Regional Park
St. Cloud, Florida
PlayShaper®
• Minimum area 36' x 33' (10,97 m x 10,06 m) ASTM

AGES 2-5

Maple Valley Park

Fargo, North Dakota

PlayShaper®

- Minimum area 39' x 37' (11.89 m x 11.28 m) ASTM





Rabanus Park

Fargo, North Dakota
PlayShaper®

- Minimum area 35' x 29' (10,67 m x 8,84 m) ASTM





AGES 2-5

Woodland Hills Recreation Center

Woodland Hills, California

Weevos®

- Minimum area 38' x 33' (11,58 m x 10,06 m) ASTM





Oak Elm Park
Windsor, Ontario, Canada
Smart Play® Motion
• Minimum area 24' x 23' (7,32 m x 7,01 m) CSA

AGES 2-5



Life Church
Cookeville, Tennessee
Smart Play® Centre
• Minimum area 35' x 33' (10,67 m x 10,06 m) ASTM

AGES 2-5



Glamorgan Park

Scarborough, Ontario, Canada

PlayShaper™

- Minimum area 35' x 32' (10,67 m x 9,75 m) CSA



play matters for all kids

We're proud to be KaBOOM!'s Partner in Play. KaBOOM! is the national nonprofit dedicated to giving all kids the childhood they deserve through great, safe places to play. Since 1996, KaBOOM! has collaborated with partners to build, open or improve more than 17,000 playspaces, engaged more than one million volunteers, and served more than 9 million kids. KaBOOM! creates places to play, inspires communities to promote and support play, and works to drive the national discussion about the importance of play in fostering healthy and productive lives. To learn why a #PLAYceforKids matters, visit kaboom.org or join the conversation at twitter.com/kaboom or facebook.com/kaboom.



Cottonwood Park
Colorado City, Arizona
Weevos®
• Minimum area 33' x 30' (10,06 m x 9,14 m) ASTM

AGES 2-5

Sycamore Creek Park

Pickerington, Ohio

PlayShaper®

- Minimum area 36' x 36' (10,97 m x 10,97 m) ASTM





PLAYSTRUCTURES

6-23 Months





Life Church
Cookeville, Tennessee
Smart Play® Nook
• Minimum area 21' x 20' (6,40 m x 6,10 m) ASTM

6-23 MODS



Kidango Foxdale Center

San Jose, California

PlayShaper®

• Minimum area 19' x 17' (5,79 m x 5,18 m) ASTM





Menominee Early Childhood Services
DKB Head Start/Early Head Start Center
Keshena, Wisconsin
PlayShaper®
• Minimum area 25' x 23' (7,62 m x 7,01 m) ASTM



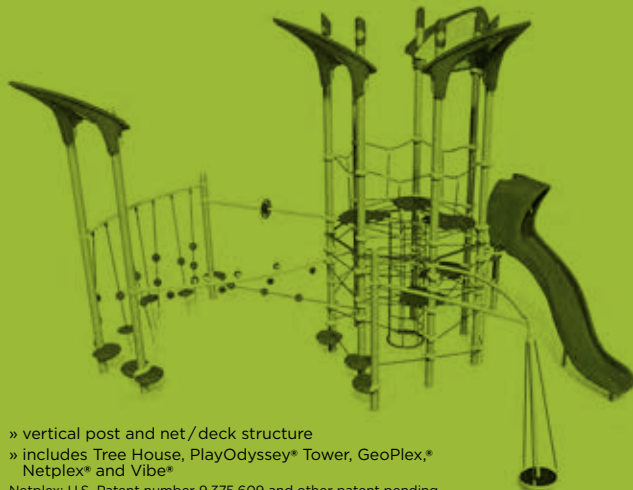
Play Components

You'll find everything you need to build your play environment. Don't see exactly what you're looking for? Talk to your local playground consultant. We have extensive design and manufacturing capabilities to ensure your playground is everything you imagine and more.

5-12 Years	98
2-5 Years	166
6-23 Months	188
Smart Play®	192
Hedra™	202
Freestanding Play	206
Fitness	248
Site Furnishings	260
Colors	270
Find More	278
Warranty/Standards	280
Index	281

5-12 Years

PlayBooster® components, pages 99-158



» vertical post and net/deck structure
» includes Tree House, PlayOdyssey® Tower, GeoPlex,*
Netplex® and Vibe®
Netplex: U.S. Patent number 9,375,609 and other patent pending
GeoPlex: Patent pending

Evos® components, pages 159-165



» ground-to-ground arched structure
Evos: U.S. Patent numbers 8,021,240, 8,366,562, 8,485,911 and 9,089,731

GeoPlex®

Strategic climbing challenges await young explorers in this collection of towers, cables, climbers and nets.

- GeoPlex towers can stand on their own or be expanded with a variety of components attached to outer posts
- Climbers and nets integrate into PlayBooster® playstructures
- Patent pending

A. 5-Post Tower

- Kids can climb both inside and outside, perch on top and crawl under panels
- Maximum fall height 103" (2,62 m)
- #220546

B. 5-Post Tower with Cables

- Complex cabling encourages strategic thinking to navigate this tower
- Cables in black only
- Maximum fall height 112" (2,84 m)
- #222232



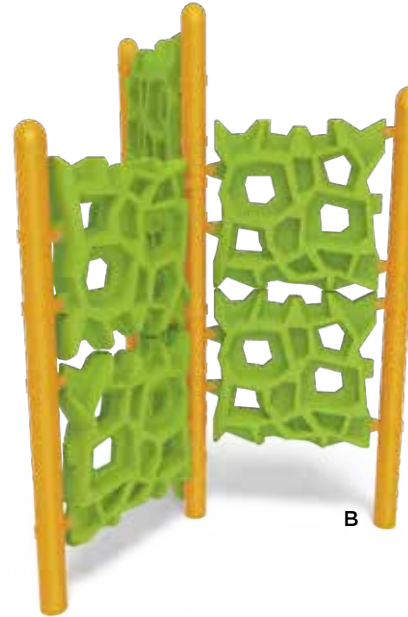
A



B



A



B

A. 3-Spoke Tower with Cables

- Cables add an extra climbing challenge
- Cables in black only
- Maximum fall height 112" (2,84 m)
- #222231

B. 3-Spoke Tower

- Seven panels provide ample room for lots of kids to climb
- Maximum fall height 103" (2,62 m)
- #220545

**A. GeoPlex® Ground-to-Deck
Double Climber**

- 64" or 72" decks
- Maximum fall height 106" (2,69 m)
- #220541

**B. GeoPlex Ground-to-Deck
Triple Climber**

- 64" or 72" decks
- Maximum fall height 106" (2,69 m)
- #220544

**C. GeoPlex 123" Deck-to-Deck
Climber**

- Connects 48" deck to 72" deck
- Maximum fall height 106" (2,69 m)
- #220543



A



B



C



A



B



C

A. GeoPlex® Climber

- 40" to 72" decks
- Maximum fall height equals deck height
- #219509

B. GeoPlex 84" Deck-to-Deck Climber

- Connects 48" deck to 72" deck
- Maximum fall height 106" (2,69 m)
- #220542

C. GeoPlex Double Panel or Triple Panel

- Maximum fall height 103" (2,62 m)
- #220538
Double Panel, Ground Level
- #220539
Double Panel, Elevated (shown)
- #220540
Triple Panel

A. GeoPlex Navigator Climber

- Cables in black only
- Maximum fall height 112" (2,84 m)
- #223163
5-Post Tower / Net / 5-Post Tower
- #223163
5-Post Tower / Net / 3-Spoke Tower (shown)
- #223163
3-Spoke Tower / Net / 3-Spoke Tower

B. GeoPlex Trailblazer Climber

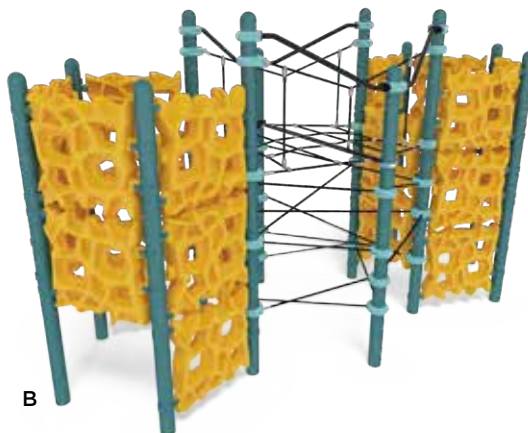
- 72" deck
- Cables in black only
- Maximum fall height 119" (3,02 m)
- #223166
5-Post Tower / Net / 5-Post Tower (shown)
- #223166
5-Post Tower / Net / (Deck)
- #223167
Net Only (Deck-to-Deck)

C. GeoPlex Labyrinth Climber

- 64" to 72" decks
- Cables in black only
- Maximum fall height 112" (2,84 m)
- #223169
5-Post Tower / Net / 5-Post Tower
- #223169
5-Post Tower / Net / (Deck) (shown)
- #223170
Net Only (Deck-to-Deck)



A



B



C



Netplex®

This configurable complex of climbing cables creates a challenging, yet safe, climbing experience.

- Start with a Netplex 7-Post, 13-Post or 14-Post mainstructure with or without roofs, then attach your choice of fun, unique PlayBooster® components that spin, slide or swing
- Netplex can stand on its own or attach to another PlayBooster playstructure to extend the fun
- Cables in black only
- U.S. Patent number 9,375,609 and other patent pending

Netplex 14-Post

- Optional 3-, 5- or 7-roof configurations available (3-roof shown)
- Mainstructure only; additional components not included
- Maximum fall height 96" (2,44 m)
- #193169

A. Netplex 13-Post

- For use with 8' Double Swoosh Slide[®] only
- Optional 3- or 5-roof configurations available
- Mainstructure only; additional components not included
- Maximum fall height 96" (2,44 m)
- #224091

B. Netplex 7-Post

- Optional 3-roof configuration available
- Mainstructure only; additional components not included
- Maximum fall height 96" (2,44 m)
- #193168



A



B



A



B

A. Disc Net™ Climber

- Interior climbing net for 7-Post or 14-Post Netplex®
- Includes four latex-free rubber belting landings
- Cables in black only
- Maximum fall height 96" (2,44 m)
- #194659

B. Disc Net Climber with Double Swoosh Slide®

- For use with 7-Post or 13-Post Netplex
- Includes climber and slide
- Maximum fall height 96" (2,44 m)
- #224086



A



A. Skyport™ Climber

- Interior climbing net for 7-Post or 14-Post Netplex
- Includes five latex-free rubber belting landings
- Cables in black only
- Maximum fall height 96" (2,44 m)
- #193175

B. Skyport Climber with Double Swoosh Slide

- For use with 7-Post or 13-Post Netplex
- Includes climber and slide
- Maximum fall height 96" (2,44 m)
- #224088

C. Watermill™ Climber

- For Netplex only
- Cables in black only
- Maximum fall height 93" (2,36 m)
- #193172

Find Even More

Talk to your Landscape Structures playground consultant to see more PlayBooster® components compatible with Netplex.





A



B



C



D

PlayOdyssey® Towers

The PlayOdyssey Tower creates a double-decker adventure kids love.

- Two octagonal decks open up 118 square feet
- Start with either the 12' or 10' Tower, then add slides, panels, climbers and more
- Maximum fall height equals deck height

A. 12' PlayOdyssey Tower

- Two 59 sq. ft. decks at 72" and 144"
- Center-access climber
- PlayOdyssey Roof included
- Add 12' Tower Slides and/or 12' Tower Panels to upper deck; any compatible PlayBooster® components to lower deck
- #165596

B. 10' PlayOdyssey Tower

- Two 59 sq. ft. decks at 48" and 120"
- Center-access climber
- Add 10' Tower Slides and/or any compatible PlayBooster panels to upper deck; any compatible PlayBooster components to lower deck
- #185296 with Roof
- #188689 without Roof

C. 12' Tower Bubble Panel

- ¼" polycarbonate
- #165824

D. 12' Tower Pipe Barrier

- #165960

A. Tower WhooshWinder® Slide

- #222709
10' height (shown)
- #222710
12' height



A

B. Tower Gemini SlideWinder2®

- #185354
10' height (shown)
- #166533
12' height



B

C. Tower SlideWinder2

- #185346
10' height
- #165780
12' height (shown)



C

D. Tower El Slide

- 30"-diameter tunnel
- Optional view tubes available (shown on page 119) on straight sections
- #185355
10' height
- #165781
12' height (shown)



D

E. Tower TurboTwister™ Tunnel Slide

- 30"-diameter tunnel
- Optional view tubes available (shown on page 119) on straight sections
- #185338
10' height
- #165827
12' height (shown)



E

Find Even More

Talk to your Landscape Structures playground consultant to see more PlayBooster components compatible with PlayOdyssey Towers.



A



B



C

Nature-Inspired Play

The Canyon Collection®

- 72" deck
- Cables in black only
- Direct bury only
- Maximum fall height 76" (1,93 m)

A. Formations

The Canyon Collection Formation 1

- All four rocks structured around a Canyon Deck
- #207577

The Canyon Collection Formation 2 (shown)

- All four rocks structured around a Canyon Deck
- Deck accommodates wheelchair turnaround
- Add any compatible PlayBooster® components
- #207578

The Canyon Collection Formation 3

- Three rocks — Ascent, Bend, Chimney — structured around a Canyon Deck
- Deck accommodates wheelchair turnaround
- Add any two compatible PlayBooster components
- #207579

The Canyon Collection Formation 4

- Three rocks — Ascent, Chimney, Den — structured around a Canyon Deck
- Deck accommodates wheelchair turnaround
- Add any two compatible PlayBooster components
- #207580

B. The Ascent® Rock Climber

- Connects to a Triangular, Square or Hexagon Deck when installed individually
- Maximum fall height 72" (1,83 m)
- #207581

C. The Bend® Rock Climber

- Connects to a Square Deck when installed individually
- Maximum fall height 72" (1,83 m)
- #207582

A. The Chimney® Rock Climber

- Connects to a Triangular, Square or Hexagon Deck when installed individually
- Maximum fall height 76" (1,93 m)
- #207583

B. The Den® Rock Climber

- Connects to a Hexagon Deck when installed individually
- Maximum fall height 72" (1,83 m)
- #207584

The Chimney/ The Den Rock Climber (not shown)

- Two rocks structured around a Hexagon Deck
- Maximum fall height 76" (1,93 m)
- #207585

C. Canyon Corkscrew Net with Rock

- Maximum fall height 72" to 76" (1,83 m to 1,93 m)
- #207851

D. Canyon High Wire Net with Rock

- Maximum fall height 72" to 76" (1,83 m to 1,93 m)
- #207852



A



A



B



Samples of fossil imprints



C



D



Samples of fossil prints



B



C

A. Facet™ Stepper

- 16", 24" and 32" decks
- Maximum fall height equals deck height
- #237937
Permalene® Handholds
- #237938
Recycled Wood-Grain Handholds (shown)

B. The Stepper™ Rock Climber

- 24" deck
- Maximum fall height equals deck height
- #160422

C. The Peak™ Rock Climber

- 32" and 40" decks
- Maximum fall height 40" (1,02 m) with 12" (0,30 m) surfacing
- #160420
Climber—ground to 40" deck (shown)
- #160421
Bridge—between 32" and 40" decks

D. The Pinnacle™ Rock Climber

- 40", 56" and 72" decks
- Maximum fall height 74" (1,88 m) with 12" (0,30 m) surfacing
- #156066

E. The Pointe™ Rock Climber

- 40" and 56" decks
- Maximum fall height 56" (1,42 m) with 12" (0,30 m) surfacing
- #156068



D



E

AdventureScapes® Climbers

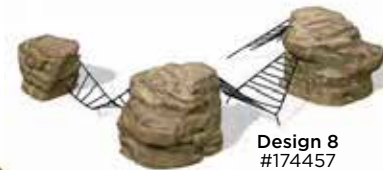
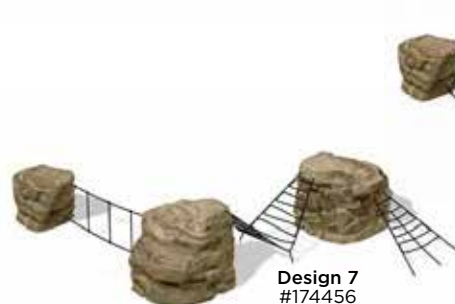
- 40" deck
- Cables in black only
- Direct bury only

Designs 1-2

- Maximum fall height 56" (1,42 m) with 12" (0,30 m) surfacing

Designs 3-9

- Maximum fall height 74" (1,88 m) with 12" (0,30 m) surfacing





A



B

A. SlideWinder2® with Tree Branch Support

- 72" deck
- Maximum fall height 72" (1,83 m)
- #169316

B. Firepole with Recycled Wood-Grain Handholds

- 32" to 72" decks
- Maximum fall height equals deck height
- #169317

C. Log Stack Climber

- 48" or 72" decks
- Maximum fall height equals deck height
- #183193

D. Log Steppers

- Up to 48" decks
- Maximum fall height equals deck height
- #169320

E. Mushroom Steppers

- Up to 40" decks
- Maximum fall height equals deck height
- #175179-175181



C



D



E

**A. Corkscrew Climber
with Recycled Wood-Grain
Handholds**

- 32" to 72" decks
- Maximum fall height equals deck height
- #172666

B. Wood Plank Wiggle Ladder

- 32" to 72" decks
- Maximum fall height equals deck height
- #169318

C. Discovery Tree Climb™

- Includes a raccoon, squirrel, age-ring tracing panel and talk tube
- 48" and 72" decks
- Maximum fall height 72" (1,83 m)
- #169322

**Loop Pole with Recycled
Wood-Grain Handholds**

- 32" to 72" decks
- Maximum fall height equals deck height
- Shown on page 130
- #172665



A



B



C





A



B



C

A. ♻️ Recycled Wood-Grain Panel

- #169319

B. Tree Stump Transfer Module

- Helps kids transfer from a wheelchair to play area
- 48" deck
- Maximum fall height 48" (1,22 m)
- #169321

C. Pine Tree Accent Topper

- 29" x 41"
- Attaches to PlayBooster® post tops
- #178470

D. Log Balance Beam

- Maximum fall height 12" (0,30 m)
- #173596

E. ♻️ Recycled Tree House Roof

- Optional "Kids Only" sign and black stovepipe chimney (shown)
- 59" x 59-1/2"
- #211190



D



E

Slides

- All poly slides have sliding footers that help ensure slides don't pull away from decks, warp or crack due to normal expansion and contraction
- Hoods help kids transition into a safe sitting position
- Maximum fall height equals deck height unless otherwise noted

A. Double Swoosh Slide®

- 49-degree slope
- 64" to 96" decks
- #130390

B. Double Swirl Slide

- 60-degree curve
- 48" to 56" decks
- #130798

C. Double Wave Slide

- 48" to 56" decks
- #123336

D. Double Slide

- 32" to 48" decks
- #123331

E. Cloudburst® Slide

- Utilizes standard 90° Tri-Deck
- 64" to 72" decks
- #144414

Ribbon Slide (not shown)

- 40" to 48" decks
- #120424



A



B



C



D



E



A



B



C

A. WhooshWinder® Slide

- 72" and 96" decks
- #222708

B. Rush™ Slide

- Maximum fall height 70" (1,78 m)
- #183176

C. Rushwinder

- Maximum fall height 72" (1,83 m)
- #189313

D. SlideWinder2®

- 32" to 96" decks
- #124863

**SlideWinder2
with Tree Branch Support**

- See page 114

E. Gemini SlideWinder2

- 32" to 96" decks
- #130800



D



E

A. SpyroSlide™

- 56" deck for 270-degree rotation
- 72" deck for 360-degree rotation
- #122033

B. Rollerslide

- TenderTuff™-coated steel rollers angled for a controlled ride
- Tactile, vestibular and proprioceptive stimulation
- 40" and 56" decks
- #123333

C. Single Slide

- 32" to 48" decks
- #123337

D. El Slide

- 30"-diameter tunnel
- 40" to 96" decks
- Optional view tubes available (shown at right) on straight sections for 56" to 96" decks
- #126368

E. Tunnel Slide

- 30"-diameter tunnel
- 32" to 96" decks
- Optional view tubes available (shown at right) on straight sections for 40" to 96" decks
- #126367

F. TurboTwister™ Tunnel Slide

- 360-degree rotation
- 30"-diameter tunnel
- 96" deck
- #123763

G. Firepole

- 32" to 72" decks
- #180100 Vibe® Handholds
- #148426 Permalene® Handholds (shown)
- #148435 SteelX® Handholds
- #169317 Recycled Wood-Grain Handholds (see page 114)



A



B



C



D



E



Optional View Tubes



F



G



A



B



C

A. Stainless Steel Spiral Slide

- 72" deck
- Maximum fall height 80" (2,03 m)
- #194699

B. Stainless Steel Wave Slide

- 64" to 72" decks
- #190858

C. Stainless Steel Slide

- 32" to 72" decks
- #190855
- SteelX® Hood (shown)
- #123340
- Poly Hood

D. Stainless Steel Double Slide

- 32" to 72" decks
- #190857

Stainless Steel Surf Slide
(not shown)

- Maximum fall height 70" (1,78 m)
- #185527

E. Surf Slide

- Maximum height 70" (1,78 m)
- #185526

Single Wave Slide
(not shown)

- 64" to 72" decks
- #131437

PlayOdyssey® Tower Slides

- See page 109



D



E

Climbers

Test strength and balance with our fun climbers.

- Choose from a variety of handhold materials and design options
- Maximum fall height equals deck height unless otherwise noted

Nature-Inspired Play Climbers

- See pages 110-116

Handhold Options



GeoPlex® Handholds

- ¾"-thick Permalene® material
- Lower grip location for climbing assistance
- #219075 GeoPlex® Handhold Panel
- #219076 GeoPlex® ¾ Barrier



Vibe® Handholds

- 7-gauge (⅜") perforated steel with ProShield® finish
- Rotationally molded, UV-stabilized, linear, low-density polyethylene
- #180094 Vibe® Handhold Panel
- #201512 Vibe® ¾ Barrier



Permalene Handholds

- ¾"-thick Permalene material
- Post-consumer recycled content
- #127953 Handhold Panel
- #160694 ¾ Barrier



SteelX® Handholds

- 7-gauge (⅜") steel with ProShield finish
- Provides protection against weather, corrosion and fire
- Vandal resistant

90° Tri-Deck Handholds

- TenderTuff™-coated handholds

Recycled Wood-Grain Handholds

- Made from 100% post-consumer recycled plastic
- See pages 110-116



A



C



B

A. Arcade Climber

- Connects to 96" deck
- Maximum fall height 96" (2,44 m)
- #229836
Vibe®
- #229830
Permalene® (shown)

B. Shockwave Climber

- Connects to 96" deck
- Maximum fall height 96" (2,44 m)
- #229837
Vibe
- #229831
Permalene (shown)

C. Dot-to-Dot Climber

- Connects to 96" deck
- Maximum fall height 96" (2,44 m)
- #229838
Vibe
- #229832
Permalene (shown)

**A. Chimney Climb Across™
24" Deck Difference**

- Connects 48" to 72" decks or 72" to 96" decks
- Cables in red or black
- Maximum fall height 96" (2,44 m)
- #229828
Permalene

**Chimney Climb Across Straight
(not shown)**

- Connects two 72" decks
- Cables in red or black
- Maximum fall height 96" (2,44 m)
- #230140
Permalene

B. Chimney® Climber

- Connects to decks 56" to 96"
- Cables in red or black
- Maximum fall height equals deck height
- #229834
Vibe
- #229829
Permalene (shown)



A



B



A



C



D



B

A. Seeker Climber

- Connects decks of equal height or with a 32" difference
- Cables in black only
- Maximum fall height equals highest deck height
- #200607 Vibe®
- #203845 Permalene® (shown)

B. Portal Climber

- Connects 64" to 72" decks
- Cables in black only
- Maximum fall height 101" (2,56 m)
- #200611 Vibe
- #202594 Permalene (shown)

C. Traveler Climber

- Connects two 72" decks
- Cables in black only
- Maximum fall height 72" (1,83 m)
- #200609

D. SpaceWalk Climber™

- Connects decks of equal height from 32" to 48"
- #178962 Vibe
- #145107 Permalene (shown)

A. Funnel Climber™

- 72" deck
- Optional vertical ladders available
- #179021 Vibe
- #145109 Permalene (shown)



A

B. Manta Ray Climber®

- Connects decks of equal height from 48" to 64"
- #178963 Vibe
- #145108 Permalene (shown)



B

C. Flex Climber

- Connects 64" to 72" decks
- Cables in black only
- Maximum fall height 99" (2,51 m)
- #200608 Vibe
- #204176 Permalene (shown)



C

D. Crest Climber

- Connects ground to 72" deck
- Cables in black only
- Maximum fall height 93" (2,36 m)
- #200610 Vibe
- #202625 Permalene (shown)



D



A



B



C



D

A. Star Seeker Climber

- 72" deck
- #179009 Vibe®
- #148039 Permalene® (shown)

B. Sling Shot Climber™

- Connects 48" to 72" decks or 56" to 64" decks
- #179028 Vibe
- #174449 Permalene (shown)

C. SpaceLink Climber™

- Links Lunar Blast® and Lunar Burst® net climbers to 72" deck
- #179017 Vibe
- #174448 Permalene (shown)

D. O-Zone® 3-Ring Climber

- 16" to 48" decks or ground level
- Cables in black only
- Maximum fall height equals highest deck height plus 28" (0,71 m); or 40" (1,02 m) for ground level to 16" deck height
- #184606 Vibe
- #184605 Permalene (shown)

A. Cliff Climber

- 48" to 72" decks
- Cable in black only
- #179024
Vibe
- #122570
Permalene (shown)
- #139501
SteelX®

B. Spiral Climber

- 32" to 72" decks
- #179004
Vibe
- #122533
Permalene (shown)

C. Starburst™ Climber

- 64" and 72" decks
- Maximum fall height equals deck height plus 11" (0,28 m)
- #179014
Vibe
- #158425
Permalene (shown)

D. JigJag Climber

- Connects decks with a 48" height difference
- Maximum fall height 66" (1,68 m) to 82" (2,08 m)
- #201886
Vibe
- #201887
Permalene (shown)
- #201888
Single
- #202056
Double

E. Ring Tangle® Climber

- 24" to 48" decks or ground level
- Maximum fall height equals highest deck height plus 6" (0,15 m); or 20" (0,51 m) for ground level
- #179016
Vibe
- #164078
Permalene
- #185583
Ground Level (shown)
- #165445
Handloop



A



B



C



D



E



A



B

A. Canyon Climber

- Connects decks of equal height from 16" to 72"
- Maximum fall height equals deck height plus 4" (0,10 m)
- #176081

B. Croquet Climber

- 48" to 72" decks
- #179020 Vibe®
- #176077 Permalene® (shown)

C. Logo Climber

- 56" to 64" decks
- #179018 Vibe (shown)
- #176080 Permalene

D. Lollipop Climber

- 48" to 72" decks
- #179019 Vibe
- #176078 Permalene (shown)

E. Sunbeam Climber

- 64" to 72" decks
- #179022 Vibe (shown)
- #176079 Permalene



C



D



E

A. Loop Ladder

- 40" to 48" decks
- #178960
Vibe
- #128252
Permalene (shown)
- #139495
SteelX®

B. Loop Arch Climber

- 40" to 72" decks
- #178958
Vibe
- #122914
Permalene (shown)
- #139493
SteelX
- #125688
90° Tri-Deck

C. Snake Climber

- 48" to 72" decks
- #178957
Vibe
- #122913
Permalene (shown)
- #139490
SteelX
- #126375
90° Tri-Deck

D. Single Wave Climber

- Connects decks with a 48" or 64" height difference
- #179005
Vibe
- #122915
Permalene (shown)
- #139487
SteelX

E. Double Wave Climber

- Connects decks of equal height or with a 16" difference (total deck height 48" to 72")
- #178959
Vibe
- #122916
Permalene (shown)
- #139488
SteelX



A



B



C



D



E



A



B



C



D



E

A. Loop Pole

- 32" to 72" decks
- #180102 Vibe®
- #148434 Permalene® (shown)
- #148438 SteelX®
- #172665 Recycled Wood-Grain Handholds

B. Centipede Climber

- 48" to 56" decks
- #180091 Vibe
- #123291 Permalene (shown)
- #139496 SteelX
- #126376 90° Tri-Deck

C. Corkscrew Climber

- 32" to 72" decks
- Maximum fall height 72" (1,83 m) for 56" to 72" decks and 48" (1,22 m) for 32" to 48" decks
- #180101 Vibe
- #148432 Permalene (shown)
- #148437 SteelX
- #172666 Recycled Wood-Grain Handholds (see page 115)

D. Sky Rail Climber

- 64" to 72" decks
- #146812

E. Vertical Ladder

- 24" to 72" decks
- #179023 Vibe
- #116249 Permalene (shown)
- #139494 SteelX
- #126372 90° Tri-Deck

A. Conical Climber™

- 40" and 72" decks
- #178961
- Vibe
- #143199
- Permalene (shown)

B. Corner Climber™

- 64" to 72" decks
- Maximum fall height equals deck height
- #143198

C. ABC Climber

- 32" to 48" decks
- Letters in red, yellow and blue only
- Maximum fall height equals deck height
- #179026
- Vibe
- #152431
- Permalene (shown)

D. Vertical Ascent® Climber

- 48" to 72" decks
- Maximum fall height equals deck height plus 5-1/2" (0,14 m)
- #145624



A



B



C

E. Cascade Climbers

4-Panel

- 48" to 56" decks
- #179010
- Vibe
- #150975
- Permalene

6-Panel

- 64" to 72" decks
- #179010
- Vibe
- #150975
- Permalene (shown)

F. Panel Vertical Ladder

- Can be mounted ground-to-deck or deck-to-deck (24" minimum difference)
- 24" to 72" decks
- #180087
- Vibe
- #116247
- Permalene (shown)



D



E



F



A



B



C

Thunderhead Climber underside



D



E

A. Pod Climber®

- 10", 20" and 30" pods

Vibe®

- #179012
16" deck
- #179013
24" deck
- #180098
32" to 40" decks

Permalene®

- #156915
16" deck
- #156916
24" deck (shown)
- #157427
32" to 40" decks

B. Mini Summit Climber

- 40" to 48" decks
- #179011
Vibe
- #153076
Permalene (shown)

C. Thunderhead Climber®

- Accessible by transfer to a 48" deck
- #139778

D. Block Climber

- 32" to 40" decks
- #179025
Vibe
- #135344
Permalene (shown)
- #139491
SteelX®

E. Summit Climber™

- 64" to 72" decks
- #179007
Vibe
- #128608
Permalene (shown)

A. Spider Web Climber

- Fits 84" module
- 16" to 32" decks
- Direct bury only
- Maximum fall height 65" (1,65 m)
- #234095



A

B. Wiggle Ladder

- 32" to 72" decks
- #180090 Vibe
- #123284 Permalene (shown)
- #139502 SteelX
- #126371 90° Tri-Deck



B

C. Climbing Wall

- TenderTuff™ coated chains for comfort
- Maximum fall height 84" (2,13 m)
- #158678



C

D. Fish Net Climber

- Fits 84" module
- 8" to 40" decks
- Should be used with Permalene handholds on the decks
- Maximum fall height 56" (1,42 m)
- #235756



D

E. Chain Ladder

- 32" to 72" decks
- #179027 Vibe
- #153350 Permalene (shown)
- #153351 SteelX
- #153352 90° Tri-Deck



E



A



B



C



D



E

A. Catwalk Climber

- Connects decks with a 24" height difference
- #128986

B. Cozy Climber™

- 32" to 48" decks
- #180092 Vibe®
- #123293 Permalene® (shown)
- #139500 SteelX®
- #126374 90° Tri-Deck

C. Step Ladder

- 32" to 72" decks
- #180084 Vibe
- #116246 Permalene (shown)
- #139492 SteelX

D. Deck Link

- #152908 Permalene Infill Panels for 48" decks and lower (shown)
- #152910 SteelX Infill Panels for 48" decks and lower
- #152907 Steel Barriers for 96" decks and lower

E. Step Deck

- 8" to 32" decks
- #111465

Overhead Events

A. LolliLadder™

- Maximum fall height 72" (1,83 m)
- #193170

B. Overhead Trekker™ Ladder

- Ground to 16" decks
- Maximum fall height 81" (2,06 m)
- #184489

C. Overhead Parallel Bars

- Ground to 32" decks
- Maximum fall height 67" to 79" (1,70 m to 2,01 m)
- #119430

D. Trapeze Horizontal Ladder

- Ground to 32" decks
- Maximum fall height 72" to 83" (1,83 m to 2,11 m)
- #111468

E. Horizontal Ladder

- Ground to 32" decks
- Maximum fall height 67" to 79" (1,70 m to 2,01 m)
- #142887





A



B

A. Circular Horizontal Ladder

- 96" diameter
- Ground to 32" decks
- Maximum fall height 67" to 79" (1,70 m to 2,01 m)
- #142891

B. S-Horizontal Ladder

- 145" ladder
- Ground to 32" decks
- Maximum fall height 67" to 79" (1,70 m to 2,01 m)
- #142884

C. C-Horizontal Ladder

- Fits 42" module
- Ground to 32" decks
- Maximum fall height 67" to 79" (1,70 m to 2,01 m)
- #142883

D. 90° Horizontal Ladder

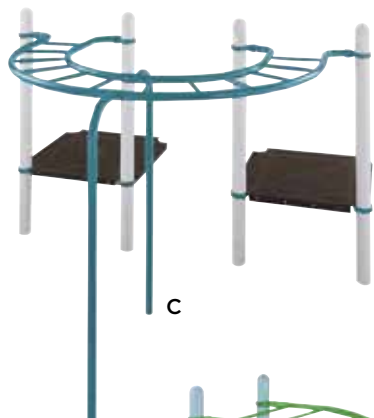
- Fits 42" module
- Ground to 32" decks
- Maximum fall height 67" to 79" (1,70 m to 2,01 m)
- #142890

E. Wave Horizontal Ladder

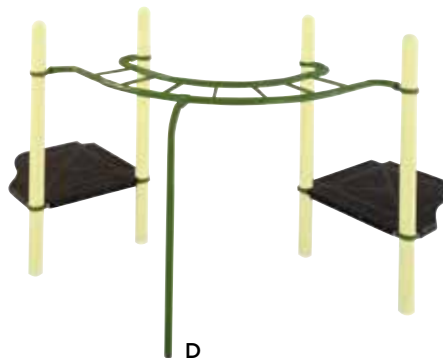
- Deck-to-deck or deck-to-ground
- Attaches to decks with a 16" height difference
- 8" to 32" decks
- Maximum fall height 83" to 86" (2,11 m to 2,18 m)
- #119613

F. Single Beam Loop Horizontal Ladder

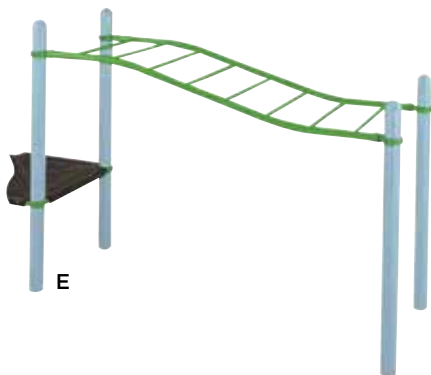
- Fits 84" or 123" modules
- Ground to 32" decks
- Maximum fall height 67" to 79" (1,70 m to 2,01 m)
- #119805
84"
- #119806
123" (shown)



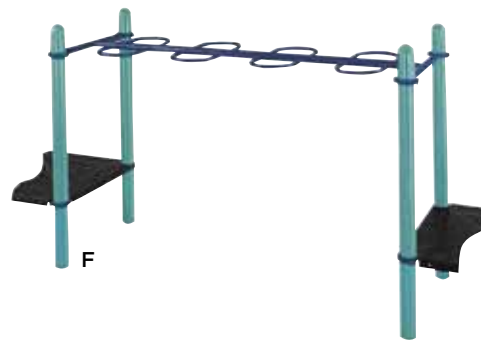
C



D



E



F

A. Swing Out™ Overhead Event

- Adjustable to heights from 66" to 76"
- 16" deck
- Maximum fall height 73" to 83"
(1,85 m to 2,11 m)
- #120872

B. Triple Ring Fling™ Overhead Event

- Sufficient upper-body strength and coordination required
- 24" to 32" decks
- Maximum fall height 93" (2,36 m)
- #123824

C. Track Rides

- Sufficient upper-body strength and coordination required
- Adjustable to heights from 65" to 78"
- Maximum fall height 78" to 93"
(1,98 m to 2,36 m)
- #111353
10' Straight
- #112465
18' Straight
- #118093
18' Curved (shown)

D. Air Dancer™ Overhead Event

- Ground to 32" decks
- Maximum fall height 72" to 82"
(1,83 m to 2,08 m)
- #121952



A



B

Recommended for Ages 8-12



C

Recommended for Ages 8-12



D



A



B



C



D

A. Ring-a-Ling™ Overhead Event

- Ground to 32" decks
- Maximum fall height 82" to 90" (2,08 m x 2,29 m)
- #126203

B. Ring Pull

- Adjustable beam height from 54-1/2" to 66-1/2"
- TenderTuff™-coated D-rings in brown only
- Maximum fall height 55" to 67" (1,40 m to 1,70 m)
- #130873

C. D-Ring with Stainless Steel Bolt Link

- TenderTuff-coated D-ring in brown only
- 2-1/4" galvanized and TenderTuff-coated chain included
- #130923

D. Ring Bridge

- Ground to 32" decks
- TenderTuff-coated D-rings in brown only
- Maximum fall height 75" to 88" (1,91 m to 2,24 m)
- #111467 Straight
- #111467 S-Shape (shown)

Bridges & Ramps

- Guardrails for 48" decks and lower
- Barriers for 72" decks and lower
- Maximum fall height equals deck height unless otherwise noted

A. Clatterbridge

- Wheelchair accessible
- 24" to 72" decks
- #143194
Guardrails 84"
- #143195
Guardrails 123"
- #147424
Barriers 84"
- #147425
Barriers 123" (shown)

B. Arch Bridge—123" Module

- Wheelchair accessible
- Connects decks of equal height up to 72"
- Maximum fall height equals deck height plus 8" (0,20 m)
- #143677
Guardrails
- #143677
Barriers (shown)

C. Arch Bridge—42" Module

- Maximum fall height equals deck height plus 3" (0,08 m)
- #114665
Permalene® Barriers
- #139383
SteelX® Barriers (shown)



A



B



C



A



A

A. Belt Bridge

- Connects decks of equal height from 24" to 48"
- #114373 Permalene® Barriers 42" (shown)
- #120310 Guardrails 84" (shown)
- #120624 Guardrails 123"

B. Bridge

- Wheelchair accessible
- 8" to 72" decks
- #156230 Guardrails
- #156231 Barriers (shown)

C. Grid Walk

- Connects decks with a 16" height difference
- 8" to 56" decks for the lowest; 24" to 72" decks for the highest
- #152444 Guardrails (shown)
- #152443 Barriers



B



C

A. Disc Challenge

- Connects decks of equal or unequal height from 8" to 40"
- Maximum fall height equals highest deck or disc height
- #180088
Vibe® Handholds 84"
- #180089
Vibe Handholds 123"
- #120873
Permalene Handholds 84"
- #121416
Permalene Handholds 123" (shown)
- #165573
Handloops 84"
- #165575
Handloops 123"



A

B. S-Disc Challenge

- Fits 123" module
- Connects decks of equal or unequal height from 8" to 40"
- #180095
Vibe Handholds
- #136157
Permalene Handholds
- #165576
Handloops (shown)



B

C. SwiggleKnots™ Bridge

- Ground, 8" or 16" decks
- Deck-to-deck or deck-to-ground
- Cables in black only
- Direct bury only
- Maximum fall height 51" (1,30 m)
- #193171



C

D. Swiggle Stix® Bridge

- Ground or 16" decks
- Cables in black only
- Direct bury only
- Maximum fall height 36" (0,91 m)
- #184490



D

E. TightRope™ Bridge

- Ground or 16" decks
- Cables in black only
- Maximum fall height 83" (2,11 m)
- #193173



E



A

A. Double-Wide Ramp

- Wheelchair accessible
- 60"-wide
- 10' ramp connects decks with an 8" height difference up to 72"
- 12' ramp connects decks with a 12" height difference up to 72"
- #171870
Guardrails 10'
- #168110
Guardrails 12'
- #171869
Barriers 10'
- #168111
Barriers 12' (shown)

B. Ramp

- Wheelchair accessible
- 42" wide
- 10' ramp connects decks with an 8" height difference up to 72"
- 12' ramp connects decks with a 12" height difference up to 72"
- #156232
Guardrails 10' (shown)
- #174815
Guardrails 12'
- #156233
Barriers 10'
- #174817
Barriers 12'



B

Tunnels

- 30" diameter unless otherwise noted

A. Straight Crawl Tunnel with Optional View Tubes

- 8" to 72" decks
- 32" or 64" lengths
- Maximum fall height equals deck height plus 1" (0,03 m)
- #126204

B. S-Crawl Tunnel

- Connects 8" to 48" decks of equal height or with a 16" difference
- Maximum fall height equals deck height plus 2" (0,05 m)
- #117088 Inclined (shown)
- #117089 Level

C. Offset Crawl Tunnel

- Connects decks with an 8" 16" or 24" height difference
- Footholds available only on 24" offset
- Maximum fall height equals deck height plus 1" (0,03 m)
- #119930 8" Offset
- #122589 16" Offset
- #129042 24" Offset (shown)

D. Wire Crawl Tunnel

- 28" diameter
- Fits 42" module
- Maximum fall height equals deck height plus 4" (0,10 m)
- #119641

E. 90° Crawl Tunnel

- Ground to 72"
- Maximum fall height equals deck height plus 1" (0,03 m)
- #142892

F. C-Crawl Tunnel

- Connects 8" to 48" decks of equal height or with a 16" difference
- Maximum fall height equals deck height plus 2" (0,05 m)
- #117088 Inclined
- #117089 Level (shown)



A



C



D



B



E

F

Enclosure Options

**Vibe®**

- 7-gauge (3/16") perforated steel with ProShield® finish
- Rotationally molded, UV-stabilized, linear, low-density polyethylene

**Permalene®**

- 3/4"-thick Permalene material
- Distinctive black core made from recycled content

**SteelX®**

- 7-gauge (3/16") steel galvanized with ProShield finish
- Provides protection against weather, corrosion and fire
- Vandal resistant

Enclosures

Add to the play experience with our engaging enclosures.

- Choose from a variety of frame material/ design options
- Flush-fit engineered
- Measure at least 38" from the top of the deck to the top of the panel, meeting CPSC and ASTM barrier requirements
- Attach outside of decks to eliminate foot entrapments and to maximize the playspace

PlayOdyssey® Tower Enclosures

- See page 108

Recycled Wood-Grain Panel

- See page 116

A. Window Vibe Panel™

- 1/4" polycarbonate
- #180465

B. Bubble Panel

- 1/4" polycarbonate
- #179043 Vibe® (shown)
- #115223 Permalene

C. Slant Window Panel

- 1/4" polycarbonate
- Maximum fall height equals deck height plus 8" (0,20 m)
- #115222



A



B



C

A. Marble Panel®

- Spinning marbles offer a sensory-rich visual, auditory and tactile experience
- #179050
Vibe (shown)
- #173567
Permalene



A

B. Rain Sound Wheel Panel™

- Steel drum rotates to create soothing rain sound
- Different geometric designs on each side
- #179052
Vibe (shown)
- #177718
Permalene



B



C

C. Chimes Panel

- Promotes auditory stimulation
- #115243

D. Xylofun Panel®

- Musical scale promotes auditory stimulation
- #179053
Vibe
- #173565
Permalene (shown)



D

E. Bongo Panel®

- Large and small bongos provide deep auditory stimulation
- #179042
Vibe
- #164092
Permalene (shown)



E

F. Ring-a-Bell™ Panel

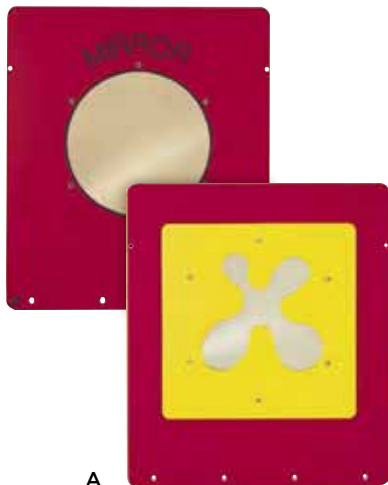
- Pivoting clappers ring six bells
- #159459

Rock-n-Ring® Panel

- Bongos on one side (image E); bells on the other (image F)
- Ground level only
- #164145



F



A



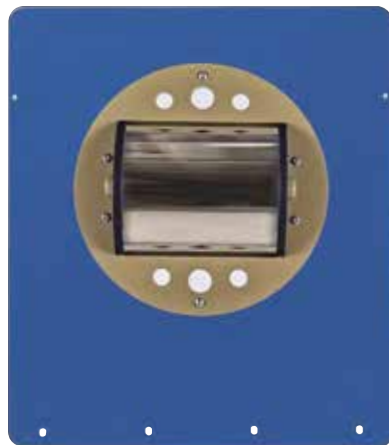
B



C



D



E



F

A. Mirror Panel

- A fun-shaped, stainless steel mirror on each side
- #115234

B. Braille and Clock Panel

- Tell time on one side; learn Braille on the other
- #123844

C. Table Panel

- Creates opportunities for creative play
- Curved tabletop
- #130565

D. Periscope Panel

- Moves side to side and forward 30 degrees
- #117957
Permalene®
- #139379
SteelX® (shown)

E. Fun Mirror Panel®

- Rotatable, two-sided concave/convex mirror engages peripheral vision and visual tracking
- #179045
Vibe®
- #173563
Permalene (shown)

F. Sign Language Panel

- Teaches the American Manual Alphabet to children and adults of all abilities
- #188835

A. Alphamaze and Labyrinth Vibe Panel™

- Two-sided panel promotes eye-hand coordination along with tactile fun
- #179041

B. Tracing Panel

- Letters on one side; numbers and shapes on the other
- #115230

C. Finger Maze Panel

- Mazes on each side develop hand-eye coordination and decision-making skills
- #115229

D. Color Splash Panel™

- Brilliant color-changing wheel on one side; black-and-gray optical illusion on the other
- #179044 Vibe
- #177712 Permalene (shown)

E. Kaleidospin Panel®

- Rotating prisms provide visual stimulation
- #179049 Vibe
- #173566 Permalene (shown)

F. Optigear Panel®

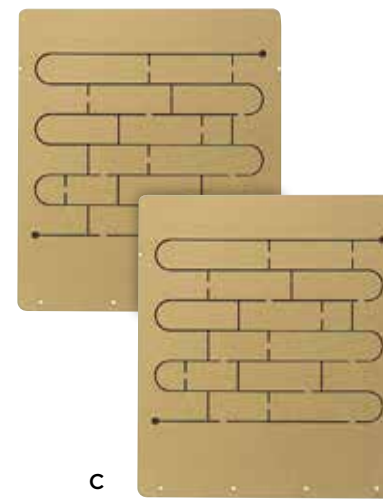
- Five rotating gears
- #179051 Vibe (shown)
- #173564 Permalene



A



B



C



D



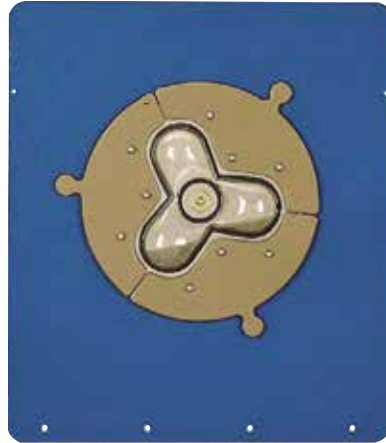
E



F



A



B



C

A. Gear Panel

- Gears teach cause-and-effect movement
- Play from either side
- #117146

B. Hourglass Panel

- Three-chamber hourglass with different flow rates
- #123319

C. Image Panel

- Turn cylinders to make letters, numbers, designs
- Play from either side
- #127681

D. Match 4 Panel

- Kids take turns to match four in a row to win
- #127678

E. Tic-Tac-Toe Panel

- Play from either side
- #115231
Permalene® (shown)
- #139377
SteelX®

F. Ball Maze Panel

- Rotates smoothly to move ball within the cutout maze
- #115236



D



E



F

DigiFuse® Panels provide vivid, full-color, photorealistic graphics to add personality to your playground. Available in a variety of themes.

A. DigiFuse Hole Panel

- #217912

B. DigiFuse Barrier Panel with Medallions

- Includes six "seek and find" medallions to attach to posts and panels for extra fun and challenge

- #218172

C. DigiFuse Barrier Panel

- #217909

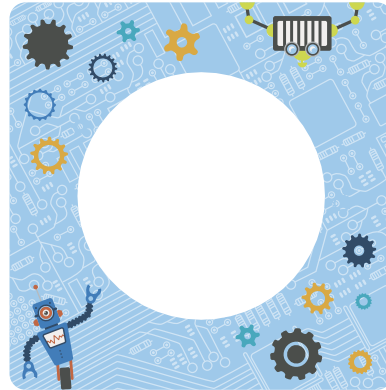
D. DigiFuse Bubble Panel

- #217908

E. DigiFuse Periscope Panel

- #217911

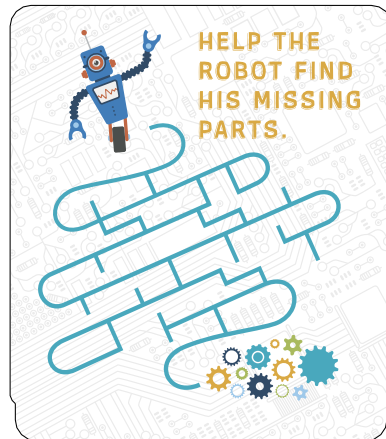
- See complete Periscope Panel on page 146



A



B



C



D



E



A



B



C

A. Wire Barrier

- Optional steering wheel available
- #120314
- #120315
- 90° Tri-Deck

B. Balcony Deck

- Optional steering wheel available
- #111240

C. Pipe Guardrail/Barrier

- Optional steering wheel available

Pipe Guardrail

- #116245 ProShield®
- #117681
- 90° Tri-Deck

Pipe Barrier

- #116244 TenderTuff™ (shown)
- #140244 ProShield
- #117680
- 90° Tri-Deck

D. Zoo Panel

- Lets adults supervise without intrusion
- #115227

E. House Panel

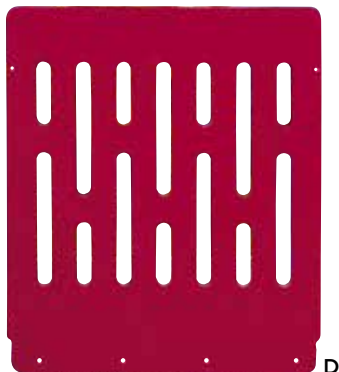
- Use two or more panels to create a playhouse
- #115235 Permalene®
- #139380 SteelX® (shown)

F. Space Travel Panel

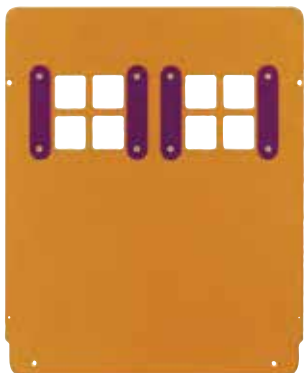
- Rocket moves along a path through space
- #123483

G. Pilot Panel

- Twin wheels for the pilot and copilot encourage cooperative play
- #119514



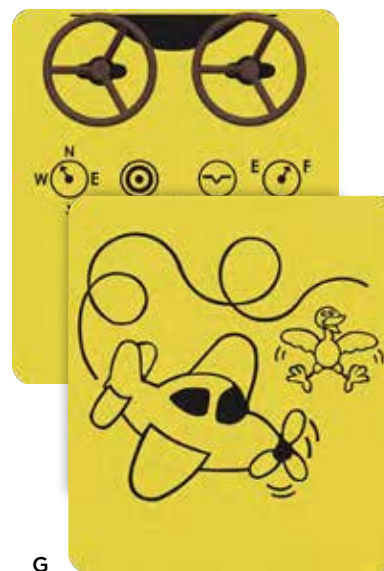
D



E



F



G

A. Match 3 Reach Panel

- Wheelchair accessible
- Kids take turns to match three in a row
- #135730

B. Image Reach Panel

- Wheelchair accessible
- Turn cylinders to make letters, numbers, designs
- Play from either side
- #129043

C. Navigator Reach Panel

- Wheelchair accessible
- Rotating steering wheel with moveable gearshift knob
- Optional steering wheel infill available on page 181
- #127439

D. Trail Tracker® Reach Panel

- Wheelchair accessible
- Mazes on each side develop hand-eye coordination and decision-making skills
- Use at ground level or as a guardrail
- #127440

E. Periscope Reach Panel

- Wheelchair accessible
- Moves side to side and forward 30 degrees
- #135729

F. Chimes Reach Panel

- Wheelchair accessible
- Promotes auditory stimulation
- #135731

Bongo Reach Panel

- Wheelchair accessible
- See page 145 for details
- #164094

Ring-a-Bell™ Reach Panel

- Wheelchair accessible
- See page 145 for details
- #164148

Curbs (shown in A and F)

- Install on elevated decks to create a safe environment for children using wheelchairs
- #191031 Standard size decks
- #191032 90° Tri-Deck



A



B



C



D



E



F

Visit playlsi.com for additional products, photos, videos and more • 888.438.6574



A



B



C



D



E

A. Hole Panel

- 23" diameter
- For ground-level or same-height, deck-to-deck play
- #179046 Vibe®
- #115253 Permalene® (shown)
- #139381 SteelX®

B. Slant Entrance Panel

- 24" diameter
- Ground level only
- Maximum fall height 7" (0,18 m)
- #115242

C. Sand and Water Panel

- Wheelchair accessible
- Five-gallon container (in tan only) with locking drain
- Ground level only
- #115257

D. Storefront Panel

- Ground level only
- #115254 Permalene (shown)
- #139378 SteelX

E. Driver Panel

- Rotating steering wheel with moveable gearshift knob
- Optional steering wheel infill available (shown on page 181)
- #115228 Permalene (shown)
- #139382 SteelX

Motion & More Fun

A. Sway Fun® Glider

- Ample room for two wheelchairs, plus two large benches for plenty of other passengers
- Maximum fall height 16" (0,41 m)
- #170894
12" platform
- #138871
16" platform (shown)

B. Log Roll

- Log in tan only
- Maximum fall height 18" (0,46 m)
- #111356

C. Accessible Stationary Cycler

- Wheelchair accessible
- Develops upper-body strength and coordination
- #153165

D. Stationary Cycler

- Handles and pedals or accessible handles only
- Maximum fall height 24" (0,61 m)
- #160054





A



B



C

A. Gyro Twister® Spinner

- Maximum fall height 50" (1,27 m)
- #201546

B. Blender™ Spinner

- Maximum fall height 75" (1,91 m)
- #201545

C. Sol Spinner™

- Cables in black only
- Maximum fall height 17" (0,43 m)
- #193174

D. Talk Tubes

- Post and 50' tubing kit sold separately
- Over deck option
- #111363

E. Boogie Board™

- Cables in black only
- Maximum fall height 24" (0,61 m)
- #193176

F. Parallel Bars

- Maximum fall height 42" (1,07 m)
- Posts sold separately
- #111361



D



E



F

A. Turning Bar

- Maximum fall height 46" (1,17 m)
- #111357

B. Chinning Bar

- Maximum fall height 62" to 76" (1,57 m to 1,93 m)
- #111357

C. E-Pod Step

- Enhances access to play events
- #166809

D. Loop Seat

- 45-degree-angle loop
- Ground level only
- #118089

E. Playstructure Seat

- Seat space measures 36-1/2" x 8" x 2-5/8"
- #120818

F. Grab Bar

- TenderTuff™ coating
- #120901

G. Handhold/Leg Lift

- TenderTuff coating
- #120902



A



B



C



D



E



F



G



A



B



C



D



E

Roofs

A. CoolToppers® Single Post Pyramid Roof

- 12' x 12' span
- Up to 96" decks
- Not IPEMA™ certified
- #154884

B. CoolToppers Full Sail

- 18' x 18' span
- 24" to 72" decks
- Not IPEMA certified
- #136488

C. CoolToppers Wave

- 7' x 7' span
- Up to 72" decks
- #166081

D. Vibe® Roof

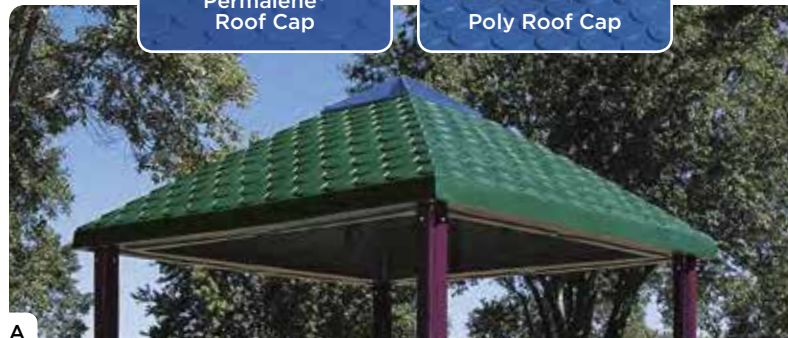
- 59" x 49"
- #179594

E. Arch Roof

- #111256

A. Super-Square Shingle Roof

- Huge 94"-square roof
- Cover multiple decks or install at ground level as a shelter
- Choose either Permalene® roof cap or poly "cupola"-style cap
- #130102



B. Hex Shingle Roof

- #130567

C. Square Poly Roof

- 55-3/4" x 53-1/2"
- Customized Permalene logo panels available
- #118110

D. Square Peak Tile Roof

- 55-3/4" x 53-1/2"
- Customized Permalene logo panels available
- #129816

E. PlayOdyssey® Roof

- 26"-diameter domed skylight
- For use only with the PlayOdyssey Octagonal Deck (shown on pages 108 and 158)
- #128980

F. SteelX® Hex Roof

- Optional flag available (shown)
- #139376

G. SteelX Square Roof

- Optional flag available (shown)
- #139375

H. Recycled Peak Roof

- #111408

Recycled Tree House Roof

- See page 116

Pine Tree Accent Topper

- See page 116





A



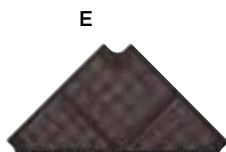
B



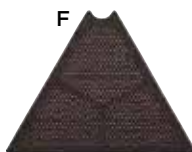
C



D



E



F



G



H



I



J



K



L

Decks

- TenderTuff™-coated, flush-mounted, perforated steel in brown or gray

A. Curved Transfer Module

- Helps kids transfer from a wheelchair to play area
- 32" to 48" decks
- #152911 Permalene® (shown)
- #152912 SteelX®

B. PlayOdyssey® Octagonal Deck

- 58-62 sq. ft. area
- 48" or 72" decks
- #128980

C. Transfer Station

- Helps kids transfer from a wheelchair to the ground
- Optional handholds available (shown)
- #126205

D. Triangular Deck (Tri-Deck)

- 37-3/4" (3) x 2-5/8"
- #111231

E. 90° Triangular Deck (Tri-Deck)

- 39-1/4" (2) x 55-1/2" x 2-5/8"
- #122197

F. Triangular Extension

- 37-7/8" (2) x 43-3/4" x 2-5/8"
- #119646

G. Square Deck

- 47" x 47" x 2-5/8"
- #111228

H. Square Corner

- 42" x 42" x 2-5/8"
- #111230

I. Square Extension

- 42" x 47" x 2-5/8"
- #111229

J. Hexagon Deck

- 78" (3) x 2-5/8"
- #178710

K. Hexagon Deck with Extension

- 78" x 127" x 2-5/8"
- #154752

L. 3-Sided Extension Deck

- 36-1/8" x 86" x 2-5/8"
- #188857

Tree Stump Transfer Module

- See page 116

Eclipse® Net Plus

- Maximum fall height 96" (2,44 m)
- Cables in black only

- A. Eclipse Net Plus
with 2-4 Attachment Points**
- #258228

- Eclipse Net Plus
with 3-5 Attachment Points
(not shown)**
- #258230

- B. Eclipse Net Plus
with 4-6 Attachment Points**
- #258231





A



B



C

Recommended for Ages 8-12



D

Slides & Gliders

A. Surf Slide

- Maximum fall height 72" (1,83 m)
- Not certified to CAN/CSA Z614
- #182180
Evos (shown)
- #201038
Eclipse Net Plus

B. Rushwinder

- Maximum fall height 72" (1,83 m)
- #189312
Evos® (shown)
- #201041
Eclipse® Net Plus

Stainless Steel Surf Slide (not shown)

- Maximum fall height 72" (1,83 m)
- #182181
Evos
- #201040
Eclipse Net Plus

C. Hang Glider®

- Sufficient upper-body strength and coordination required
- Maximum fall height 81" (2,06 m)
- #156465

D. Rush™ Slide

- Maximum fall height 72" (1,83 m)
- #182865
Evos (shown)
- #201035
Eclipse Net Plus

Climbers

A. Crescent Climber®

- Cables in black only
- Maximum fall height 30" (0,76 m)
- #156461

B. O-Zone® Climber

- Cables in black only
- Maximum fall height 88" (2,24 m)
- #156448

C. Belt-Zone™ Climber

- Cables in black only
- Maximum fall height 45" (1,14 m)
- #179222



A



B



C



A



B



C

A. BalanceWinder™ Climber

- Cables in black only
- Maximum fall height 14-3/4" (0,37 m)
- #160252

B. Helix Net® Climber

- Cables in black only
- Maximum fall height 48" (1,22 m)
- #156449

C. Ring Tangle® Climber

- Maximum fall height 66" (1,68 m)
- #156462

Overhead Events

A. ArcOver® Ladder

- Maximum fall height 80" (2,03 m)
- #156457

B. Bow Ladder®

- Maximum fall height 82" (2,08 m)
- #156463

C. Overhead Trekker™ Ladder

- Maximum fall height 81" (2,06 m)
- #160254



A



B

Bridges

D. Swiggle Stix® Bridge

- Cables in black only
- Maximum fall height 36" (0,91 m)
- #156450

E. PodStomper® Bridge

- Maximum fall height 25" (0,64 m)
- #156464



C



D



E



Trail Tracker and Chimes Reach Panels



Navigator and Periscope Reach Panels



B



C



D



E

Motion & More Fun

A. Accessible Reach Panels

- Wheelchair accessible
- Trail Tracker® Reach Panel**
 - #161778
- Chimes Reach Panel**
 - #161777
- Navigator Reach Panel**
 - #161779
- Periscope Reach Panel**
 - #161775
- Image Reach Panel**
 - Shown on page 151
 - #161780
- Match 3 Reach Panel**
 - Shown on page 151
 - #161776

- Bongo Reach Panel** (not shown)
 - #164095

- Ring-a-Bell™ Reach Panel** (not shown)
 - #164150

B. Chatter Noodle® Talk Tubes

- Wheelchair accessible
- Maximum of 40' between posts
- #156453

C. Blender™ Spinner

- Maximum fall height 75" (1,91 m)
- #202822

D. Gyro Twister® Spinner

- Maximum fall height 50" (1,27 m)
- #202823

E. Sol Spinner™

- Cables in black only
- Maximum fall height 17" (0,43 m)
- #202824

A. Wobble Pod® Bouncer

- Maximum fall height 16" (0,41 m)
- #156452

B. Noodle Pod® Steps

- Maximum fall height equals pod height
- #156959
One Step (shown)
- #164156
Two Steps

C. Cyclor

- Wheelchair accessible
- #156467

D. TwirlWind™ Turning Bar

- Maximum fall height 49" (1,24 m)
- #160210

E. Power Lifter™ Chinning Bar

- Maximum fall height 74" (1,88 m)
- #160208

F. Accessible Power Lifter Chinning Bar

- Wheelchair accessible
- Maximum fall height 49" (1,24 m)
- #160209

G. E-Pod® Step

- Maximum fall height equals pod height
- #156454



A



B



C



D



E



F



G

2-5 Years

PlayShaper® components, pages 167-183



» vertical post and deck structure

Weevos® components, pages 184-187



» ground-to-ground arched structure

Weevos: U.S. Patent numbers 8,021,240, 8,366,562, 8,485,911 and 9,089,731



Nature-Inspired Play

- Maximum fall height equals deck height

A. Facet™ Stepper

- 16" to 32" decks
- #237939

B. The Peak™ Rock Climber

- 32" deck
- #160423

C. The Stepper™ Rock Climber

- 24" deck
- #160424

D. Wood Plank Wiggle Ladder

- 32" to 48" decks
- #185862

E. Mushroom Steppers

- Up to 40" decks
- #185863

F. Log Steppers

- Up to 40" decks
- #185861



A



B



Samples of fossil imprints



C



D



E



F



A



B



C



D

A. Log Stack Climber

- 48" deck
- #183195

B. Tree Stump Transfer Module

- Helps kids transfer from a wheelchair to play area
- 32" to 48" decks
- #173585

C. ♻️ Recycled Wood-Grain Panel

- #173586

D. ♻️ Recycled Tree House Roof

- Optional "Kids Only" sign and black stovepipe chimney (shown)
- 59" x 59-1/2"
- #211191

Slides

- All poly slides have sliding footers that help ensure slides don't pull away from decks, warp or crack due to normal expansion and contraction
- Hoods help kids transition into a safe sitting position
- Maximum fall height equals deck height unless otherwise noted

A. Curved Slide

- 90-degree curve
- 40" deck
- #123339

B. SlideWinder2®

- 32" to 48" decks
- #132117

C. Stainless Steel Slide

- 32" to 48" decks
- 6" sidewalls
- Poly hood
- #190854

D. Single Slide

- 36" to 48" decks
- #133668

E. SpyroSlide™

- 270-degree rotation
- 48" deck
- Maximum fall height 56" (1,42 m)
- #143480

F. Tunnel Slide with Optional View Tubes

- 24"-diameter tunnel
- 40" deck
- Maximum fall height 45" (1,14 m)
- #128952

G. El Slide

- 24"-diameter tunnel
- 32" deck
- #111323



A



B



C



D



E



F



G



A



B

A. Gemini SlideWinder2®

- 32" to 48" decks
- #133426

B. Double Wave Slide

- 48" deck
- #178720

C. Stainless Steel Double Slide

- 32" to 48" decks
- 6" sidewalls
- Poly hood
- #190856

D. Double Slide

- 32" to 48" decks
- #132155

E. Double Swirl Slide

- 60-degree curve
- 48" deck
- #178768

F. Lava Run Slide

- 30" to 32" decks
- Can be flipped to create Critter Canyon climber (shown on page 171)
- #137967



D



E



C



F

Climbers

- Maximum fall height equals deck height

A. Critter Canyon

- 30" to 32" decks
- Can be flipped to create Lava Run Slide (shown on page 170)
- #137966

B. Thunderhead Climber®

- Can be used as a transfer point to meet ADA compliance criteria
- Accessible by transfer to a 48" deck
- #139911

C. Conical Climber™

- 40" deck
- #143200



A



B



Thunderhead Climber
underside



C



A



B



C



D



E

A. Mini Summit Climber®

- 40" deck (direct bury) or 48" deck (direct bury or surface mount)
- #153077

B. ABC Climber

- 32" to 48" decks
- Letters in red, yellow and blue only
- #152432

C. Cozy Climber™

- 32" to 48" decks
- #132023

D. Block Climber

- 32" and 40" decks
- #135547

E. Pod Climber®

- 16" to 40" decks
- #135346

A. Loop Ladder

- 40" to 48" decks
- #111364

B. Loop Arch Climber

- 32" to 48" decks
- #139262

C. Wiggle Ladder

- 32" to 48" decks
- #181114

D. Deck Link

- Connects decks with a 16" or 24" height difference
- Maximum upper deck height 48"
- #153021

E. Step Ladder

- 32" to 48" decks
- #111327

F. Step Deck

- 16" deck
- #119981

Nature-Inspired Play Climbers

- See pages 167-168



A



B



C



D



E



F



Overhead Events

A. Horizontal Ladder

- 16" deck
- Maximum fall height 60" (1,52 m)
- #129967

Bridges & Ramps

- Maximum fall height equals deck height unless otherwise noted

B. Arch Bridge

- Fits 42" module
- Maximum fall height equals deck height plus 5" (0,13 m)
- #111348

C. Belt Bridge

- Fits 42" module
- 16" to 48" decks
- #131956

D. Ramp

- Wheelchair accessible
- Connects decks with an 8" height difference
- 8" to 48" decks
- #132828
Deck-to-Deck (shown)
- #132844
Deck-to-Ground

Tunnels

- 24" diameter
- Maximum fall height equals deck height plus 6" (0,15 m)

A. Straight Crawl Tunnel with Optional View Tubes

- 28" or 56" lengths
- #128953

B. Wire Crawl Tunnel

- Fits 42" module
- #118099

C. Offset Crawl Tunnel

- Connects decks with an 8" height difference
- #139268

D. 90° Crawl Tunnel

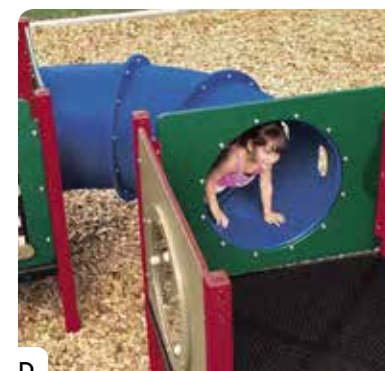
- 8" to 48" decks
- #115409

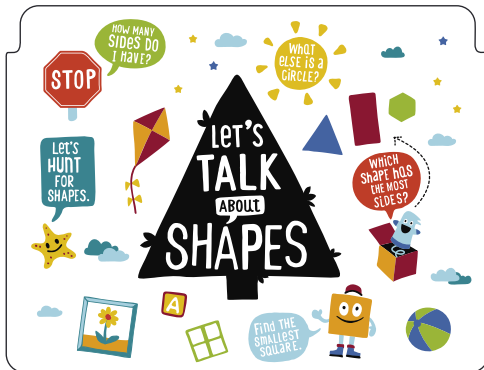
E. C-Crawl Tunnel

- 8" to 48" decks
- Available with a 16" incline
- #118097 Level
- #118098 Inclined (shown)

F. S-Crawl Tunnel

- 8" to 48" decks
- Available with a 16" incline
- #118097 Level (shown)
- #118098 Inclined





Enclosures

- Measure at least 31" from the top of the deck to the top of the panel, meeting CPSC and ASTM barrier requirements
- Attach snugly to posts to eliminate potential entanglements and to maximize the playspace

DigiFuse® Panel

- DigiFuse provides vivid, full-color, photorealistic graphics to add learning opportunities in literacy, STEM and healthy development to your playground
- More than 30 themes available
- Many available in English, Spanish or French
- Interactive features on some panels



We're proud to partner with **Too Small to Fail's Talking is Teaching: Talk, Read, Sing** campaign to reach parents and caregivers to help boost their young children's early language development. Together, we'll promote children's early brain and vocabulary development through play and playgrounds.

A. Balcony Deck

- 17"-radius integrated deck
- Optional steering wheel available (see page 181)
- #139260

B. Marble Panel®

- Spinning marbles offer a sensory-rich visual, auditory and tactile experience
- #173572

C. Chimes Panel

- Promotes auditory stimulation
- #113211

D. Rain Sound Wheel Panel™

- Steel drum rotates to create soothing rain sound
- Different geometric designs on each side
- #177719

E. Xylofun Panel®

- Musical scale promotes auditory stimulation
- #173570

F. Bongo Panel®

- Bongos provide deep auditory stimulation
- #164093

G. Ring-a-Bell™ Panel

- Pivoting clappers ring four bells
- #159460

Rock-n-Ring® Panel

- Bongos on one side (image F); bells on the other (image G)
- Ground level only
- #164146



A



B



C



D



E



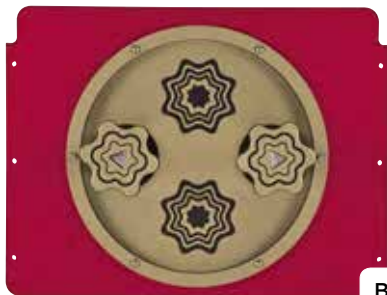
F



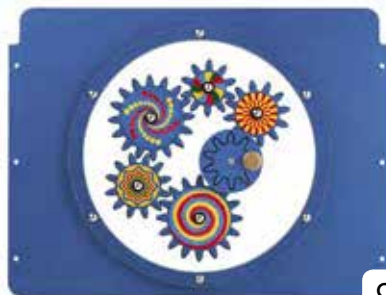
G



A



B



C

A. Color Splash Panel™

- Brilliant color-changing wheel on one side; black-and-gray optical illusion on the other
- #177713

B. Kaleidospin Panel®

- Rotating prisms provide visual stimulation
- #173571

C. Optigear Panel®

- Five rotating gears
- #173569

D. Gear Panel

- Gears teach cause-and-effect movement
- Play from either side
- #117147

E. Ball Maze Panel

- Rotates smoothly to move ball within the cutout maze
- #111300

F. Hourglass Panel

- Three-chamber hourglass with different flow rates
- #124333

G. Periscope Panel

- Moves side to side and forward 30 degrees
- #118429

H. Mirror Panel

- A fun-shaped, stainless steel mirror on each side
- #111298

I. Fun Mirror Panel®

- Rotatable, two-sided concave/convex mirror engages peripheral vision and visual tracking
- #173568



D



E



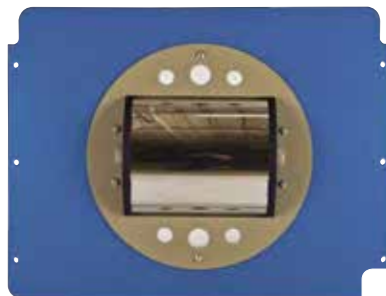
F



G



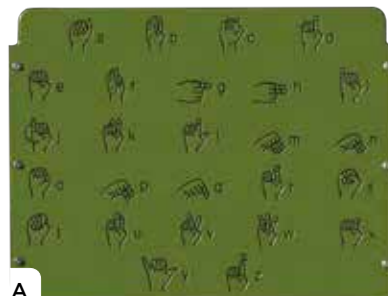
H



I

A. Sign Language Panel

- Teaches the American Manual Alphabet to children and adults of all abilities
- #188836



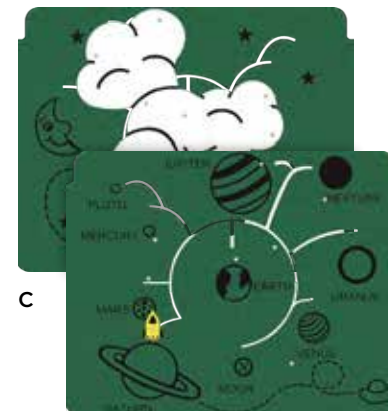
A

B. Braille and Clock Panel

- Tell time on one side; learn Braille on the other
- #123845



B



C

C. Space Travel Panel

- Rocket moves along a path through space
- #123484

D. Tracing Panel

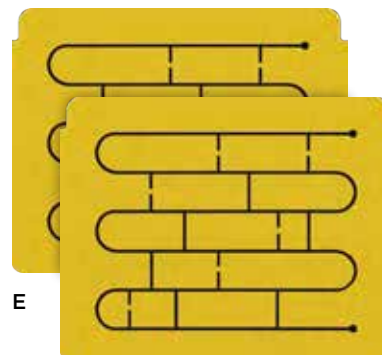
- Letters on one side; numbers and shapes on the other
- #111290



D

E. Finger Maze Panel

- Mazes on each side develop hand-eye coordination and decision-making skills
- #111289



E

F. Bubble Panel

- 1/4" polycarbonate
- #111282



F

G. Slant Window Panel

- 1/4" polycarbonate
- Maximum fall height equals deck height plus 5" (0,13 m)
- #111281



G

H. Slant Entrance Panel

- 24" diameter
- Ground level only
- Maximum fall height 7" (0,18 m)
- #111387



H

I. Hole Panel

- 23" diameter
- For ground-level or same-height, deck-to-deck play
- #111284



I



A



B



C



D



E



F



G



H



I

A. Image Panel

- Turn cylinders to make letters, numbers, designs
- Play from either side
- #127685

B. Match 4 Panel

- Kids take turns to match four in a row to win
- #127684

C. Tic-Tac-Toe Panel

- Play from either side
- #111293

D. Sand and Water Panel

- Five-gallon container (in tan only) with locking drain
- Ground level only
- #111297

E. Storefront Panel

- Ground level only
- #144984

F. Wire Barrier

- Optional steering wheel (shown)
- #117946
- #117945
- 90° Tri-Deck

G. House Panel

- Use two or more panels to create a playhouse
- #111299

H. Zoo Panel

- Lets adults supervise without intrusion
- #111287

I. Table Panel

- Creates opportunities for creative play
- #111292

♻️ Recycled Wood-Grain Panel

- See page 168

A. Driver Panel

- Rotating steering wheel with moveable gearshift knob
- Optional steering wheel infill available (shown at right)
- #111288

B. Pilot Panel

- Twin wheels for the pilot and copilot encourage cooperative play
- Optional steering wheel infill available (shown at right)
- #119515

C. Navigator Reach Panel

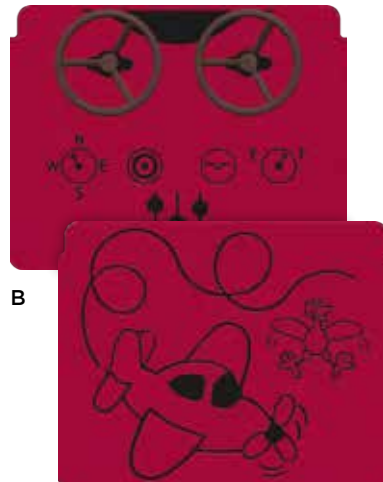
- Wheelchair accessible
- Rotating steering wheel with moveable gearshift knob
- Optional steering wheel infill available (shown at right)
- #139266

D. Trail Tracker® Reach Panel

- Wheelchair accessible
- Mazes on each side develop hand-eye coordination and decision-making skills
- Use at ground level or as a guardrail
- #139264



A



B



C



Optional Permalene® infill



D

Motion & More Fun

E. Talk Tubes

- Post and 50' tubing kit sold separately
- Over deck option
- #115198

F. Chinning Bar

- Maximum fall height 45-1/2" (1,16 m)
- #139272

G. Handloop

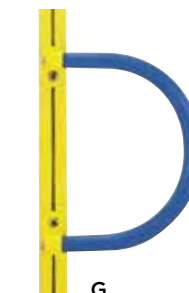
- #119977



E



F



G



A



B



C



Permalene®
Roof Cap



Poly Roof Cap



D

Roofs

♻️ Recycled Tree House Roof

- See page 168

A. Square Peak Tile Roof

- 55-3/4" x 53-1/2"
- Personalized Permalene® logo panel available
- #179229

B. Square Poly Roof

- 55-3/4" x 53-1/2"
- Personalized Permalene logo panel available
- #179225

C. Super-Square Shingle Roof

- Huge 94"-square roof
- Cover multiple decks or install at ground level as a shelter
- Choose either Permalene roof cap or poly "cupola"-style cap
- #179239

D. Arch Roof

- #111407

Decks

- TenderTuff™-coated, flush-mounted, perforated steel in brown or gray

Tree Stump Transfer Module

- See page 168

A. Curved Transfer Module

- Helps kids transfer from a wheelchair to play area to play area
- 32" to 48" decks
- #153020

B. Transfer Station

- Helps kids transfer from a wheelchair to the ground
- #126205

C. Square Deck

- 44- $\frac{3}{8}$ " x 44- $\frac{3}{8}$ " x 2- $\frac{5}{8}$ "
- #111237

D. Square Corner

- 42" x 42" x 2- $\frac{5}{8}$ "
- #111238

E. Square Extension

- 42" x 44- $\frac{3}{8}$ " x 2- $\frac{5}{8}$ "
- #111239

F. 90° Triangular Deck

- 42" (2) x 55- $\frac{1}{2}$ " x 2- $\frac{5}{8}$ "
- #117495



A



B



C



D



E



F



A



B

Slides

A. Cozy Coaster® Slide

- Maximum fall height 40" (1,02 m)
- #164174

Climbers

- Cables in black only

B. Giggle Jiggler® Climber

- Maximum fall height 12" (0,30 m)
- #164171

C. Wee Planet™ Climber

- Maximum fall height 53" (1,35 m)
- #173573

D. Wee Pod® Climber

- Maximum fall height 20" (0,51 m)
- #164172



C



D

Bridges

- Cables in black only

A. Boppity Bridge®

- Maximum fall height 22" (0,56 m)
- #164178

B. Swigly Stix™ Bridge

- Maximum fall height 14" (0,36 m)
- #173575

Tunnels

C. Wee Crawl® Tunnel

- 30" diameter
- Maximum fall height 7" (0,18 m)
- #173574



A



B



C



A



Reverse view



B



C

Motion & More Fun

A. Color Splash Panel™

- Brilliant color-changing wheel on one side; black-and-gray optical illusion on the other
- #177714

B. Optigear Panel®

- Five rotating gears
- #173578

C. Kaleidospin Panel®

- Rotating prisms provide visual stimulation
- #173580

D. Fun Mirror Panel®

- Rotatable, two-sided concave/convex mirror engages peripheral vision and visual tracking
- #173577

E. Imagination Table™

- Helps kids develop socially and creatively
- #173582

F. Marble Panel®

- Spinning marbles offer a sensory-rich visual, auditory and tactile experience
- #173581



D



E



F

A. Rain Sound Wheel Panel™

- Steel drum rotates to create soothing rain sound
- Different geometric designs on each side
- #177720

B. Bongo Panel®

- Large and small bongos provide deep auditory stimulation
- #173584

C. Xylofun Panel®

- Musical scale promotes auditory stimulation
- #173579

D. Alphamaze Panel® and Labyrinth Panel

- Two-sided panel promotes eye-hand coordination along with tactile fun
- #173576

Bongo and Alphamaze Panel®

- Bongos on one side (image B); letters, numbers and shapes on the other (top image D)
- #173715

Bongo and Xylofun Panel®

- Bongos on one side (image B), xylophone on the other (image C)
- #173583

Xylofun and Alphamaze Panel®

- Xylophone on one side (image C); letters, numbers and shapes on the other (top image D)
- #173716

E. Chitter Chatter Noodle® Talk Tubes

- #164177

F. Twirly Bar

- Maximum fall height 46" (1,17 m)
- #164173



A



Reverse view



B



C



D



Reverse view



E



F

6-23 Months

PlayShaper® components, pages 189-191



Learning Wall components, page 191



Slides

A. Infant Single Slide

- Maximum fall height 30" (0,76 m)
- Complies with ASTM F2373 for ages 6-23 months
- #166076

Climbers

B. Critter Canyon

- 30" to 32" decks
- #137966



A



B



A



B



C

Tunnels

A. Straight Crawl Tunnel with Optional View Tubes

- 28" or 56" lengths
- #128953

B. Wire Crawl Tunnel

- Fits 42" module
- #118099

C. Crawl Tunnel to 6" Deck

- Connects ground to 6" deck
- #136443

See more tunnels on page 175.

Enclosures

D. Bead and Block Panel

- Beads, blocks and mirror help stimulate sensory learning
- Optional handholds available (shown)
- #111370

E. Geometric Panel

- Personalize with your own accessories (items shown not included)
- Optional handholds available (shown)
- #112997



D



E

Learning Wall

A. Learning Wall

- Select from a variety of panels to complete your Learning Wall

See more panels on pages 176-181.

Motion & More Fun

B. Infant Balance Bar

- Provides balance to infants learning to stand and walk
- Complies with ASTM F2373 for ages 6-23 months
- #175950

Find Even More

Ask your Landscape Structures playground consultant about other products for ages 6-23 months.



A



B

Smart Play[®]

These preconfigured, compact playstructures are designed to save on space and budget while offering a bundle of age-appropriate activities. Simply choose your colors and let the fun begin.

Venti®

Venti packs 20 exciting activities into its compact size. Nets, slides, belts and climbers provide challenges that promote physical development and strategic thinking, while also creating hangouts where kids can take a break and connect with others.

- Compact structure requires less surfacing
- Multiple entry points and activities accommodate a large number of kids
- ADA compliant
- Aluminum or steel posts
- Choice of color for Permalene®, ProShield® and polyethylene
- Direct Bury or Surface Mount
- U.S. Patent number D807,978
- Maximum fall height 87" (2,20 m)
- Minimum area required: 39' 2" x 45' 2" (11,93 m x 13,76 m)
- #210739

Activities include:

1. Belt Bridge
2. Square Loop Vertical Climber
3. Windowpane Overhead Ladder
4. Single Slide
5. Cargo Net
6. Inclined Cable Walk
7. Double Swoosh Slide®
8. Square Loop Incline Climber
9. Vertical Panel Climber
10. Fire Pole
11. TightRope™
12. Wood Plank Ladder
13. Cabin Climber
14. Swiggle Stix®
15. Cabin Seating Area
16. Panel Maze
17. Square Steppers
18. Turning Bar
19. Chinning Bar
20. Belt Hammock

Also available in HDG

The cool aesthetics of Hot Dip Galvanized (HDG) steel offer a fresh look for your playground and a durable finish to provide protection in coastal environments.

- Choice of color for Permalene and polyethylene
- Direct Bury
- Steel Posts
- #228068



Ages 2-5



Motion

This accessible playstructure packs 16 activities into its compact structure. Kids can clamber up the climbers, through the inclined tunnel and among the patterned decks, or settle into the cozy corner complete with a tabletop for imaginative play. Along the way there are cut-out shapes to peek through, bongos and ring-a-bells to play, and geometric shape-and-fit games.

- Compact structure
- Built-in shade
- Available with Sand Table or Flat Play Table
- ADA compliant
- Choose one ProShield® color, one polyethylene color and three Permalene® colors
- Direct Bury or Surface Mount
- Maximum fall height 32" (0,81 m)
- Minimum area 22' 7" x 24' (6,88 m x 7,32 m)
- #197057

Activities include:

1. Inclined Tunnel
2. Leaf Shape-and-Fit
3. Wiggle Ladder
4. Slide
5. Shape-and-Fit Table
6. Sand Play Station with Sifters and Seats (or optional Flat Play Table)
7. Leaf Trail
8. Race Car/Roller Track
9. Numbers Climber
10. Ring-a-Bell™
11. Marbles
12. Bongo Panel®
13. Bead Panel
14. Steering Wheel
15. Steppers
16. Alphabet Panel

Cube

A curated collection of interactive play events helps build cognitive and motor skills for toddlers and preschoolers. While this playstructure welcomes 2- to 5-year-olds for play, we recognize that there are huge developmental differences between 2-year-olds and 5-year-olds. That's why we designed Cube to specifically meet the needs of kids ages 2 to 3.

- Compact structure
- Five GripX textured decks
- ADA compliant
- Choice of color for Permalene, ProShield and polyethylene
- Direct Bury or Surface Mount
- Maximum fall height 33" (0,84 m)
- Minimum area 22' x 22' 2" (6,71 m x 6,76 m)
- #205160

Activities include:

1. Steel Drum
2. Nesting Puzzle
3. Manipulative Arrow Panel
4. Puzzle Panel
5. Activity Table with Bench
6. Table Panel
7. Ladder Rail Disks
8. Crawl-through Panel
9. Arch Climber
10. Mirror Panel
11. Magnet Stack
12. Slide
13. Steering Wheel
14. Slotted Puzzle



Ages 2-5



Patent pending

Centre

Connecting a Loft, Fire Station and Market Cafe with elevated crawl tunnels creates a whole village for kids to explore. Offering physical activities, imaginative play opportunities and learning prompts, the Centre focuses on whole-child development in a fun and playful setting.

- Compact structure
- Built-in shade
- ADA compliant
- Choice of color for Permalene® and polyethylene
- Direct Bury or Surface Mount
- Patent pending
- Maximum fall height 44" (1,12 m)
- Minimum area 32' 4" x 34' 7" (9,86 m x 10,54 m) ASTM
- #233083 ASTM/CSA
- #237305 EN



Fire Station

Kids can take control at the wheel, pat Sparky the friendly fire dog or slide on down to their next adventure. They'll enjoy lots of activities that teach young ones about fire safety and helping others, including an object find game, plenty of bells and gears, and a fun mirror that shows them how they'd look in uniform.

- Compact structure
- Built-in shade
- ADA compliant
- Choice of color for Permalene and polyethylene
- Direct Bury or Surface Mount
- Patent pending
- Maximum fall height 44" (1,12 m)
- Minimum area 24' 5" x 25' 9" (7,44 m x 7,85 m) ASTM
- #233073 ASTM/CSA
- #238233 EN

Activities include:

1. Slide
2. Dog House
3. Mirror Panel
4. Panel Climbers (2)
5. Fire Hydrant
6. Find-It Sign
7. Ring-a-Bell™
8. Fire Fighter Question Panel
9. Dashboard Panel
10. Dog Bone
11. Bench



Ages 2-5



Patent pending

Market Cafe

This farmer's market and cafe lets little ones take turns placing meal orders, dining with friends and learning about yummy food choices while describing their meal. Among lots of activities, kids can make pictures in the image panel, bing-bong the apple bell and develop language skills by naming fruits and vegetables in the stand.

- Compact structure
- Built-in shade
- ADA compliant
- Choice of color for Permalene® and polyethylene
- Direct Bury or Surface Mount
- Maximum fall height 44" (1,12 m)
- Patent pending
- Minimum area 23'10" x 24'9" (7,26 m x 7,54 m) ASTM
- #233075 ASTM/CSA
- #238356 EN

Activities include:

1. Order Talk-through Panel
2. Meal Table
3. Vegetable Stand
4. Flower Spinners
5. Slide
6. Image Panel
7. Find-It Sign (not shown)
8. Bench (not shown)
9. Open/Closed Sign
10. Lower Level Crawl Space

Loft

Handrails lead children up the steps of the Loft and into a world of imaginary play. With a built-in find-it game, language prompts and learning activities connected to early childhood curriculum goals, lower level clubhouse and so much more, you'll find plenty of interactive elements to engage developing minds and bodies.

- Compact structure
- Built-in shade
- ADA compliant
- Choice of color for Permalene and polyethylene
- Direct Bury or Surface Mount
- Maximum fall height 44" (1,12 m)
- Patent Pending
- Minimum area 225' 11" x 27' 1" (7,90 m x 8,26 m) ASTM
- #223857

Activities include:

1. Belt Seat
2. Clock
3. Crawl Tunnel
4. Vegetable/Leaf Sliders
5. Colors Talk-through Mat
6. Seats
7. Slide
8. Flower Gear Panel
9. Belt Climber
10. Flower Talk Tube
11. Image Panel
12. Flower/Leaf Spinners
13. Find-It Sign
14. Mailbox Talk Tube
15. Shapes Panel
16. Steps
17. Alphabet Panel
18. Bubble Window
19. Counting Panel
20. Lower Level Clubhouse



Ages 2-5



A

Pairs

Connect two playstructures with an elevated crawl tunnel to enhance the imaginative fun and physical activity levels.

- Compact structure
- Built-in shade
- ADA compliant
- Choice of color for Permalene® and polyethylene on each structure
- Direct Bury or Surface Mount
- Patent pending

A. Loft + Fire Station

- Maximum fall height 44" (1,12 m)
- Minimum area required 25' 11" x 34' 7" (7,90 m x 10,54 m)
- #233077 ASTM/CSA
- #237302 EN

B. Fire Station + Market Cafe

- Maximum fall height 44" (1,12 m)
- Minimum area required 28' 8" x 29' 3" (8,74 m x 8,92 m)
- #233081 ASTM/CSA
- #237304 EN

C. Loft + Market Cafe

- Maximum fall height 44" (1,12 m)
- Minimum area required: 27' 1" x 32' 4" (8,26 m x 9,86 m)
- #233079 ASTM/CSA
- #237303 EN



B



C

Nook

Sized just right for little crawlers and early walkers, this whimsical playstructure offers plenty of colorful activities to capture young ones' attention. Whether they're playing inside the house or outside, the intentional sightlines let you keep your eye on them at all times. A balance rail along the white picket fence encourages early standing and walking.

- Compact structure
- Built-in shade
- Complies with ASTM F2373
- Choice of Permalene color
- Direct Bury or Surface Mount
- Maximum fall height 7" (0,18 m)
- Patent pending
- Minimum area required:
19'2" x 20'1" (5,84 m x 6,12 m)
- #223856

Activities include:

1. Flower Marbles
2. Flower/Leaf Spinners
3. Balance Rail on Front Fence
4. Front Step
5. Doorbell
6. Fruit Basket Panel
7. Mirror
8. Alphabet Panel
9. Table with Seats
10. Climber
11. Flower/Bee Spinners
12. Bells
13. Rabbit Slider
14. Music Notes Panel
15. Window
16. Balance Rail on Back Fence
17. Flower Panel
18. Side Step
19. Numbers Panel
20. Shape Sliders



Patent pending



HedraTM

Our newest preconfigured playstructures change the rules of play. There are countless combinations of interconnected, age-appropriate experiences. Available in three beautiful palettes.

NEW Hedra™

Endless formations of fun are rooted in the new geometric playscapes of Hedra and Hedra Scout. These tessellated shapes create playful pods that link together, forming a fascinating interconnected matrix of three-dimensional play.

Wayfinding encourages improvisation, sparking cognitive and imaginative exploration. Along the way, kids ages 5 to 12 and 2 to 5 can experience the warmth and texture of natural bamboo, polycarbonate panels that offer colorful light play and pathways that morph into hangout spots where friends can relax.

NEW Hedra

- Multiple entry points and interconnected experiences
- ADA compliant
- Choice of Alpine™ Slide or SlideWinder2®
- Optional Stainless Steel Slide
- Choice of bamboo panels or perforated aluminum panels
- Choice of polycarbonate panels or perforated aluminum panels
- Choose from three specially curated palettes
- Direct bury or surface mount
- Patent pending
- Maximum fall height 88" (2,24 m) ASTM, 126" (3,20 m) CSA and 88" (2,24 m) EN
- Minimum area required 43' x 52' (13,11 m x 15,85 m) varies with slide choice
- #265928



Patent pending

Ages 2-5 and 5-12



NEW Hedra™ and Hedra™ Scout



NEW Hedra Scout

- Multiple entry points and interconnected experiences
- ADA compliant
- Includes SlideWinder2® and Curved Slide
- Choice of bamboo panels or perforated aluminum panels
- Choice of polycarbonate panels or perforated aluminum panels
- Choose from three specially curated palettes
- Direct bury or surface mount
- Patent pending
- Maximum fall height 70" (1,78 m) ASTM, 99" (2,52 m) CSA and 70" (1,78 m) EN
- Minimum area required 33' x 36' (10,06 m x 10,97 m)
- #265929



Patent pending

Freestanding Play

Structures

Crab Trap®

There's no shortage of climbing challenges on the Crab Trap. This fun net structure features a variety of materials that invite kids to climb up, down and all around.

- ADA compliant
- Direct bury
- Patent pending
- Maximum fall height 118" (3,00 m)
- Minimum area required 33' x 36'6" (10,06 m x 11,13 m)
- #248479

Also available in HDG

Hot Dip Galvanized (HDG) steel frame offers enhanced corrosion resistance for coastal environments and a cool, modern look.

- #251054



Ages 5-12



A



B

Super Netplex®

Super Netplex offers height, accessibility and visibility with a range of stimulating play, from climbing to spinning to bouncing and more, plus spots to simply hang out. Choose from four preconfigured designs for a fantastic addition to your playground.

- Choose ProShield® colors for posts, clamps and components
- Choose Polyethylene color for slides
- ADA compliant
- Steel-reinforced cables are extremely durable and vandal resistant, available in black
- Latex-free rubber belting, available in black
- Patented clamping system. U.S. Patent No. 9,375,609
- Direct bury
- Compliant to ASTM, CSA and EN

A. NEW Super Netplex — 8' Single Tower

- 8' Double Swoosh Slide®
- Spiral Belt Climber
- LolliLadder™
- Sol Spinner™
- Overall structure height 18' 4" (5,59 m)
- Maximum fall height 96" (2,44 m) ASTM, 134" (3,40 m) CSA and 96" (2,44 m) EN
- Minimum area required 29' 11" x 44' 10" (9,12 m x 13,67 m)
- #254625

B. NEW Super Netplex — 12' Single Tower

- 8' Double Swoosh Slide
- 12' TurboTwister™ Tunnel Slide
- Spiral Belt Climber
- SwiggleKnots™ Bridge
- Portal Climber
- Chinning Bar
- Turning Bar
- Overall structure height 25' 8" (7,82 m)
- Maximum fall height 144" (3,66 m) ASTM, 144" (3,66 m) CSA and 118" (3,00 m) EN
- Minimum area required 36' 11" x 45' 7" (11,25 m x 13,89 m)
- #254626

A. NEW Super Netplex – 8' to 12' Towers

- 8' Double Swoosh Slide
- 12' TurboTwister Tunnel Slide
- Spiral Belt Climber
- Disc Net™ Climber
- Elevated Crawl Tunnel
- LolliLadder
- Sol Spinner
- SwiggleKnots Bridge
- Portal Climber
- Chinning Bar
- Turning Bar
- Overall structure height 25'8" (7,82 m)
- Maximum fall height 144" (3,66 m) ASTM, 144" (3,66 m) CSA and 118" (3,00 m) EN
- Minimum area required 42'1" x 60'4" (12,83 m x 18,39 m)
- #254627



A

B. NEW Super Netplex – 12' Double Towers

- Features 8' Double Swoosh Slide®
- Two 12' TurboTwister™ Tunnel Slides
- Spiral Belt Climber
- Disc Net Climber
- Elevated Crawl Tunnel
- LolliLadder
- Sol Spinner
- SwiggleKnots Bridge
- Portal Climber
- Chinning Bar
- Turning Bar
- Overall structure height 25'8" (7,82 m)
- Maximum fall height 144" (3,66 m) ASTM, 144" (3,66 m) CSA and 118" (3,00 m) EN
- Minimum area required 46'9" x 63' (14,25 m x 19,20 m)
- #254629

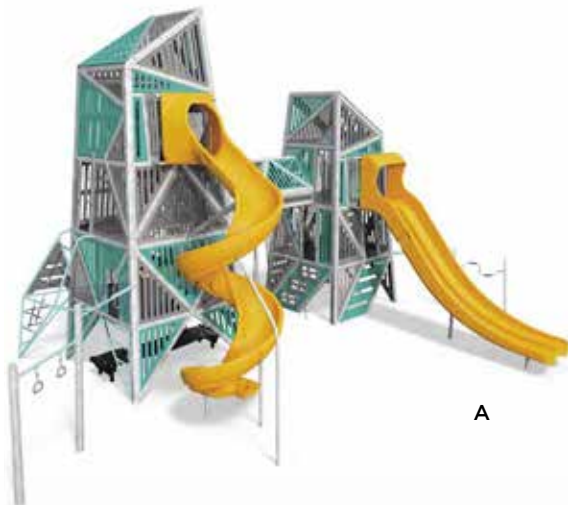


B



Ages 5-12

Designed for US and Canada



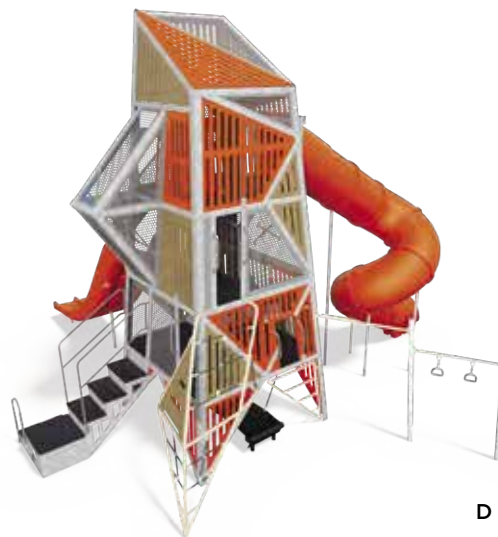
A



B



C



D

Alpha® Tower and Alpha Link® Towers

Combine height and geometric designs for fun climbing challenges.

- Hot Dip Galvanized (HDG) steel frame offers enhanced corrosion resistance for coastal environments
- Built-in shade
- Alpha Tower has decks at 4', 8' and 12'
- Alpha Link Towers have decks at 4', 8' and 12' on the larger tower and 4' and 8' on the smaller tower
- ADA compliant
- Choose two Permalene® colors for panels, one polyethylene color for slides and one ProShield® color for components
- Direct bury
- Patent pending

A. Alpha Link Towers

- 8' Double Swoosh Slide® and 12' WhooshWinder® Slide
- Maximum fall height 144" (3,66 m) ASTM and 182" (4,62 m) CSA
- Minimum area required 40'5" x 47'3" (12,32 m x 14,40 m)
- #234516

B. Alpha Link Towers TT

- 8' Double Swoosh Slide and 12' TurboTwister™ Tunnel Slide
- Maximum fall height 144" (3,66 m) ASTM and CSA
- #241397

C. Alpha Tower

- 8' Double Swoosh Slide and 12' WhooshWinder Slide
- Maximum fall height 144" (3,66 m) ASTM, 182" (4,62 m) CSA
- Minimum area required 34'2" x 43'1" (10,41 m x 13,13 m)
- #226231

D. Alpha Tower TT

- 8' Double Swoosh Slide and 12' TurboTwister Tunnel Slide
- Maximum fall height 144" (3,66 m) ASTM and CSA
- Minimum area required 39'9" x 43'1" (12,12 m x 13,13 m)
- #241405

A. Alpha Link Towers EN

- Complies with EN and AS standards
- 8' EI Slide and 12' TurboTwister Tunnel Slide
- Maximum fall height 96" (2,44 m)
- Minimum area required 40'6" x 47'3" (12,34 m x 14,40 m)
- #241203

B. Alpha Link Towers AUS

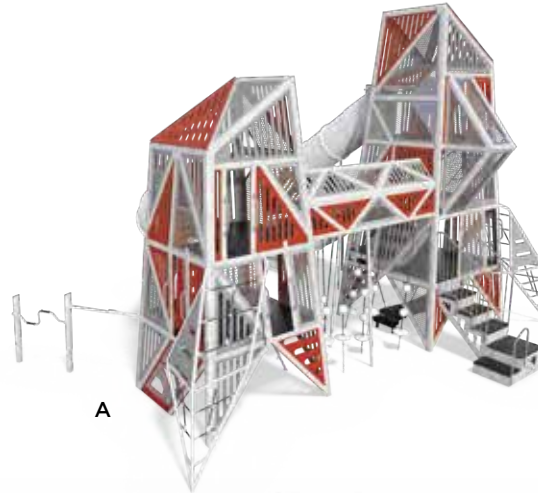
- Complies with EN and AS standards
- 8' Double Swoosh Slide and 12' TurboTwister Tunnel Slide
- Maximum fall height 96" (2,44 m)
- Minimum area required 39'1" x 45'8" (11,92 m x 13,92 m)
- #242983

C. Alpha Tower EN

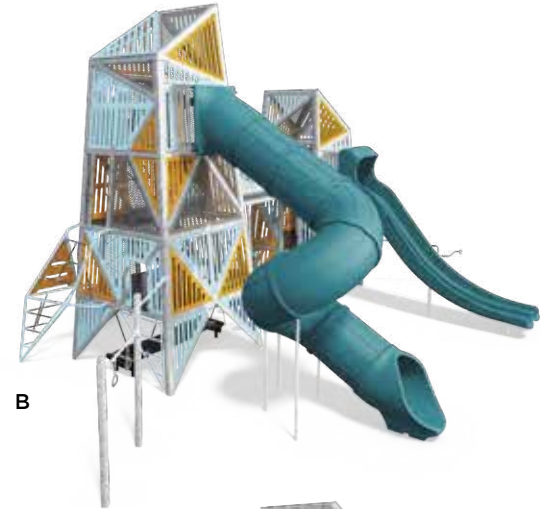
- Complies with EN and AS standards
- 8' EI Slide and 12' TurboTwister Tunnel Slide
- Maximum fall height 96" (2,44 m)
- Minimum area required 38'5" x 43'2" (11,71 m x 13,16 m)
- #239103

D. Alpha Tower AUS

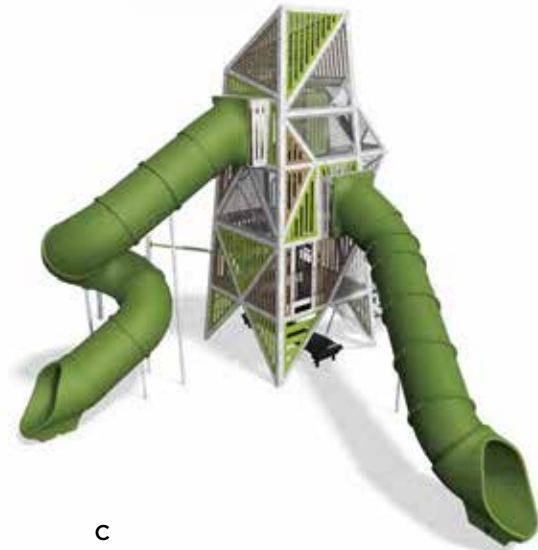
- Complies with EN and AS standards
- 8' Double Swoosh Slide and 12' TurboTwister Tunnel Slide
- Maximum fall height 96" (2,44 m)
- Minimum area required 38'5" x 41'9" (11,71 m x 12,73 m)
- #242982



A



B



C



D



A



B



C

Rhapsody® Outdoor Musical Instruments

This superior collection of chimes, metallophones and drums welcomes polished musicians and newbies alike to explore the power of rhythm, experience subtle shifts in tone, and discover the many ways individual sounds can be creatively combined.

- Artful design looks appropriate near playgrounds, in parks, on trails or in sculpture gardens
- Authentically designed for playing music or just striking notes and beats
- Precision manufacturing for consistency in tone
- Durable materials for years of music-making
- Mallets optimized to produce the best sound for each range of notes
- U.S. Patent numbers 9,734,808, 9,773,482, 9,818,384 and other patents pending
- Instruments on pages 212–213 are wheelchair accessible

A. Vibra® Chimes

- Large chimes play the lowest notes and vibrate for sensory stimulation
- Each chime comes with its own mallet
- #251573 Diatonic scale (8 notes)
- #251574 Pentatonic scale (5 notes)
- #251575 Major chord (4 notes)
- #252557 Chime 1 (lowest note)
- #252556 Chime 2
- #252555 Chime 3
- #252554 Chime 4
- #252553 Chime 5
- #252552 Chime 6
- #252551 Chime 7
- #252550 Chime 8 (highest note)

B. Cascata® Bells

- Vertical arrangement of ten bells provide auditory and visual pleasure
- #250340

C. Tongue Drum

- Six notes can be played on different “tongues” of the drum
- Optional mallet (shown)
- #253114

A. Animato®

- Metallophone with 15 bars to play a melody
- #214438

B. Vivo®

- Metallophone with 15 tubes for lively music
- #214441

C. Grandioso®

- 15 chimes provide deep resonant tones
- #214442

D. Kundu Drum

- Hourglass-shaped drum played with the hands
- #214444

E. Kettle Drum

- Generates low sound for keeping the beat
- #214445

F. Goblet Drum

- Achieve different sounds by playing with fingers or palms
- #214443



A



B



C



DEF



Ages 2-5



A



B

A. Ditty®

- Metallophone with 8 bars at a lower level for younger kids
- Not certified to CAN/CSA Z614
- #228212

B. Jingle®

- Metallophone with 8 tubes for young musicians
- Not certified to CAN/CSA Z614
- #228213

C. Warble®

- 8 chimes at the right height for smaller players
- Not certified to CAN/CSA Z614
- #228214

D. Tongue Drum Junior

- Six notes can be played on different "tongues" of the drum
- Not certified to CAN/CSA Z614
- #250341

E. Kundu Drum Junior

- Hourglass-shaped drum on a shorter stem
- #228218

F. Kettle Drum Junior

- Large drum on a shorter stem
- #228217

G. Goblet Drum Junior

- Goblet-shaped drum on a shorter stem
- #228215



C



D



G



E



F

Motion & More Fun

We-Go-Round®

- Fully wheelchair accessible
- Resistance mechanism ensures fun and safe rotation
- Available with two or three benches, leaving ample room for wheelchairs
- Available with perforated side panels, or a variety of DigiFuse® themes
- Direct bury only
- Patent pending
- Maximum fall height 40" (1,02 m)
- Minimum area required 20'10" (6,35 m) diameter
- #248819
with perforated side panels
- #249558
with DigiFuse side panels

Also available in HDG

- The cool aesthetics of Hot Dip Galvanized (HDG) steel offer a fresh look for your playground and extra protection in harsh coastal environments
- #251036
with perforated side panels
- #251037
with DigiFuse side panels



Ages 5-12



A



B



C

A. Curva® Spinner

- Accommodates multiple kids
- Direct bury only
- Maximum fall height 9" (0,23 m)
- Minimum area required 13' 9" (4,19 m) diameter
- #247179 ProShield®
- #249553 Stainless Steel

B. Chill® Spinner

- Comfortable seat for relaxing or spinning
- Direct bury or surface mount
- Maximum fall height 19" (0,48 m)
- Minimum area required 14' 8" (4,47 m) diameter
- #247189 ProShield
- #249557 Stainless Steel

C. TopsyTurny® Spinner

- Direct bury only
- Maximum fall height 18" (0,46 m)
- Minimum area required 22' 3" (6,78 m) diameter
- #205800

Global Motion®

Add a unique play experience to your playground with Global Motion®. Kids can climb, rotate, and explore two levels in this fun-filled structure. Patented progressive resistance makes it easy to turn Global Motion at slower speeds, and prevents it from being turned too quickly, providing a fun and challenging experience while still feeling safe and in control.

- Direct bury only
- Maximum fall height 105" (2,67 m)
- Minimum area required 26' 5" (8,05 m) diameter
- U.S. Patent number 9,868,069
- #218915
ProShield
- #228071
Hot Dip Galvanized



Ages 5-12



A



B



C



Blender Spinner w/Gyro Twister Spinner Add-On



D

A. Blender™ Spinner

- Maximum fall height 75" (1,91 m) for Single; 78" (1,98 m) for Double
- Minimum area required 20'11" x 15'11" (6,38 m x 4,85 m) for Single; 29'5" x 15'11" (8,97 m x 4,85 m) for Double
- #201548 Single (shown)
- #201551 Add-On

B. Gyro Twister® Spinner

- Maximum fall height 50" (1,27 m) for Single; 53" (1,35 m) for Double
- Minimum area required 21'2" x 15'11" (6,45 m x 4,85 m) for Single; 29'11" x 15'11" (9,12 m x 4,85 m) for Double
- #201549 Single (shown)
- #201552 Add-On

C. Sol Spinner™

- Cables in black only
- Maximum fall height 17" (0,43 m) for Single; 20" (0,51 m) for Double
- Minimum area required 21'5" x 15'11" (6,53 m x 4,85 m) for Single; 30'4" x 15'11" (9,25 m x 4,85 m) for Double
- #201550 Single (shown)
- #201553 Add-On

D. Stand-Up Spinner

- 20" (0,51 m) diameter
- Direct bury only
- Maximum fall height 8" (0,20 m)
- Minimum area required 14' (4,27 m) diameter
- #155077

A. OmniSpin® Spinner

- Easy to enter from a wheelchair or walker
- Encourages interactive, inclusive play
- Maximum fall height 18" (0,46 m)
- Minimum area required 19' (5,79 m) diameter
- U.S. Patent numbers 8,870,668 and 9,220,988
- #173591

B. Flywheel® Spinner

- Direct bury only
- Maximum fall height 74" (1,88 m)
- Minimum area recommended 22'3" (6,78 m) diameter
- #185927

C. Saddle Spinner

- 5-degree angle
- Maximum fall height 12" (0,30 m) for ages 2-5; 16" (0,41 m) for ages 5-12
- Minimum area required 13' 8" (4,17 m) diameter
- #152179



A



B Ages 5-12



C

Ages 5-12



A



B

ZipKrooz Assisted with two ZipKrooz Additional Bays shown

A. ZipKrooz®

- The original track style zip-line
- Sufficient upper-body strength and coordination required
- 2-way ride
- Easy glide trolley
- Track available in 34', 50' or 66' lengths (50' length shown)
- Maximum fall height 105" (2,67 m)
- Minimum area required 53' x 21' 6" (16,15 m x 6,55 m) for 34' length
- U.S. Patent number 9,932,046
- #194663
- #195507
Additional Bay

B. ZipKrooz Assisted

- Molded bucket seat with harness provides stability for kids with limited upper-body mobility
- 2-way ride
- Easy glide trolley
- Track available in 34', 50' or 66' lengths
- Maximum fall height 105" (2,67 m)
- Minimum area required 53' x 21' 6" (16,15 m x 6,55 m) for 34' length
- #196212
- #196213
Assisted Additional Bay

A. Track Rides

- Sufficient upper-body strength and coordination required
- TenderTuff™-coated trolley handle in brown only
- Includes one Playstructure Seat/Step for Curved
- Direct bury only
- Maximum fall height 78" to 93" (1,98 m to 2,36 m)
- Minimum area required 22' 8" x 15' 11" (6,91 m x 4,85 m) for 10' length; 29' 11" x 15' 11" (9,12 m x 4,85 m) for 18' length; 34' 2" x 15' 11" (10,41 m x 4,85 m) for Curved
- #121648
10' Straight
- #121875
18' Straight
- #121874
18' Curved (shown)



A Recommended for Ages 8-12



B

B. Boogie Board™

- Cables in black only
- Direct bury only
- Maximum fall height 24" (0,61 m)
- Minimum area required 22' 8" x 16' (6,91 m x 4,88 m)
- #194704

C. Spring Platform with Post or Accessible Handhold

- Supported by three coil springs
- Maximum fall height 15" (0,38 m)
- Minimum area required 17' 4" (5,28 m)
- #125059



C

Ages 5-12



A



B



C

A. Spring Pod™ Bouncer

- 14" (0,36 m) diameter
- Maximum fall height 16" (0,41 m)
- Minimum area required 6' (1,83 m) around perimeter of pod cluster
- #120876

B. Wobble Pod® Bouncer

- Maximum fall height 16" (0,41 m)
- Minimum area recommended 14' x 15' 8" (4,27 m x 4,78 m)
- #158105

C. Cycler

- Wheelchair accessible
- Direct bury only
- Minimum area recommended 14' 5" (4,39 m) diameter
- #158107

D. Log Roll

- Log in tan only
- Maximum fall height 18" (0,46 m)
- Minimum area required 13' 3" x 17' 3" (4,04 m x 5,26 m)
- #100027

E. Stationary Cycler

- Handles and pedals or accessible handles only
- Maximum fall height 24" (0,61 m)
- Minimum area required 16' x 13' 3" (4,88 m x 4,04 m)
- #160055



D



E



A. Sway Fun® Glider

- Ample room for two wheelchairs, plus two large benches for plenty of other passengers
- Requires accessible ramp or berm (sold separately) for wheelchair access to the 12" or 16" platform
- Maximum fall height 16" (0,41 m)
- Minimum area required 12'11" x 24' 9" (3,94 m x 7,54 m)
- #170894
12" platform
- #138871
16" platform (shown)
- #177140
with 12' ramp assembly
- #258372
with 12' ramp assembly and berm plate

B. SuperScoop

- 360-degree rotation
- TenderTuff™-coated seat in brown only
- Direct bury only
- Minimum area recommended 3' (0,91 m)
- #123831

C. Accessible SuperScoop

- Minimum area recommended 3' (0,91 m)
- #123832



A



B



C

Ages 2-12



Bear



Chicken



Dinosaur



Fire Engine



Horse



Police Car



Rocket Ship



Tractor



Ages 6 months - 5 years

Butterfly

DigiRiders®

- DigiFuse® provides vivid, full-color, photorealistic graphics
- Available only in colors shown
- Minimum area required between DigiRiders 6' (1,83 m)

Bear

- Maximum fall height 21" (0,53 m)
- Minimum area required 12' 9" x 15' 3" (3,89 m x 4,65 m)
- #233059

Chicken

- Maximum fall height 21" (0,53 m)
- Minimum area required 12' 9" x 16' 1" (3,89 m x 4,90 m)
- #233061

Dinosaur

- Maximum fall height 21" (0,53 m)
- Minimum area required 12' 9" x 15' 8" (3,89 m x 4,78 m)
- #233058

Fire Engine

- Maximum fall height 22" (0,56 m)
- Minimum area required 13' 6" x 15' 11" (4,11 m x 4,85 m)
- #233054

Horse

- Maximum fall height 20" (0,51 m)
- Minimum area required 12' 9" x 15' 4" (3,89 m x 4,67 m)
- #233060

Police Car

- Maximum fall height 21" (0,53 m)
- Minimum area required 12' 9" x 15' 4" (3,89 m x 4,67 m)
- #233053

Rocket Ship

- Maximum fall height 21" (0,53 m)
- Minimum area required 12' 9" x 16' 1" (3,89 m x 4,90 m)
- #233055

Tractor

- Maximum fall height 21" (0,53 m)
- Minimum area required 12' 9" x 15' 9" (3,89 m x 4,80 m)
- #233056

Butterfly

- Maximum fall height 15" (0,38 m)
- Minimum area required 13' 3" x 14' 5" (4,04 m x 4,39 m)
- #233057

A. Whimsy Riders®

- Available only in colors shown
- Maximum fall height 24" (0,61 m)
- Minimum area required 13' x 15' (3,96 m x 4,57 m)
- Minimum area required between Whimsy Riders 6' (1,83 m)

Dolphin

- #135536

Sea Horse

- #135535

Zebra

- #135534

B. Bobble Riders®

- Maximum fall height 25" (0,64 m)

Single

- Minimum area required 13' 6" x 14' 2" (4,11 m x 4,32 m)
- #164074

Double

- Minimum area required 13' 8" x 15' 3" (4,17 m x 4,65 m)
- #164075

C. Custom Spring Riders

- Bring your idea to life and add a theme to your playground

Ask your Landscape Structures playground consultant for more ideas on how to get your own custom-themed spring rider.



Dolphin



Single



Double



Sea Horse



Zebra



C



C



Ages 2-12



A

A. We-saw™

- Maximum fall height 54" (1,37 m)
- Minimum area required 16'8" x 23'5" (5,08 m x 7,14 m)
- #186490

B. Seesaws

- Permalene® seat in tan only
- Maximum fall height 36" (0,91 m)
- Minimum area required 13'6" x 21'7" (4,11 m x 6,58 m)
- #148636
2-Seat
- #148637
4-Seat (shown)

C. Seesaw Back Support

- Available with or without the seat strap (seat strap not IPEMA™ certified)
- #148706

D. Stand-Up Seesaw

- Maximum fall height 27" (0,69 m)
- Minimum area required 15'1" x 20'1" (4,83 m x 6,12 m)
- #148638



B



Ages 5-12 D

Safety Note: The seat strap is intended for use in supervised areas only. In public playground environments, we recommend a checkout system to reduce vandalism/theft and for safety reasons.

▲WARNING

TO AVOID ENTANGLEMENT, REMOVE AND RETURN STRAP TO OWNER WHEN STRAP IS NOT IN USE.



C

Slides

A. Rushwinder

- Maximum fall height 72" (1,83 m)
- Minimum area required 6' (1,83 m) diameter
- #189314

B. SpyroSlide™

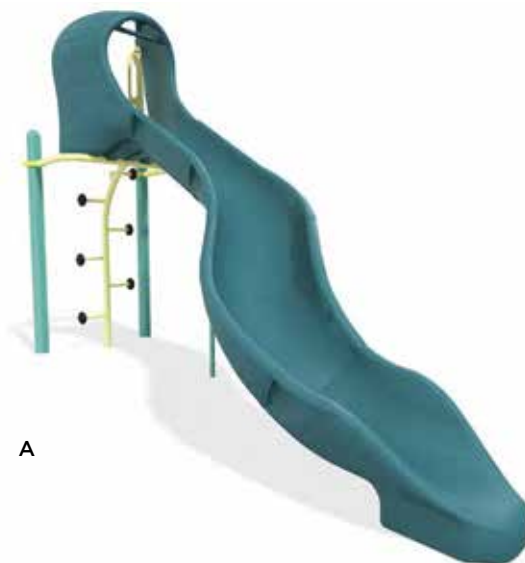
- 56" deck for 270-degree rotation
- 72" deck for 360-degree rotation (shown)
- Maximum fall height equals deck height
- Minimum area required 22' 8" x 17' 6" (6,91 m x 5,33 m) for 56" deck; 24' 4" x 17' 7" (7,41 m x 5,35 m) for 72" deck
- #203791

C. Wave Poly Slide

- Maximum fall height 72" (1,83 m)
- Minimum area required 14' x 29' (4,27 m x 8,84 m)
- #100046

D. 40" Poly Slide

- Maximum fall height 40" (1,02 m)
- Minimum area required 14' x 23' (4,27 m x 7,01 m)
- #100046



Ages 2-5 D

Ages 2-12



A Single



Double

Swings

- Direct bury only

A. Oodle® Swings

- Accessible to enter from a wheelchair or walker
- Maximum fall height 90" (2,29 m)

Single

- Minimum area required 26' x 30' (7,92 m x 9,14 m)
- #173592 ProShield®
- #228069 Hot Dip Galvanized

Double

- Minimum area required 39'11" x 30' (12,15 m x 9,14 m)
- #210117 ProShield

B. Friendship® Swing

- Spacious, two-seated face-to-face swing allows multiple people to enjoy the ride
- One Friendship Swing per swing bay
- Patent pending
- #237293 Friendship Swing with 5" Arch Swing Frame
- #237294 Friendship Swing with 5" Arch Swing Frame Additional Bay
- #237295 Friendship Swing with Arch Tire Swing Additional Bay
- #237296 Friendship Swing with Single Post Frame 52" Bury
- #237297 Friendship Swing with Single Post Frame 52" Bury Additional Bay



A. Arch Swing Frame

- Seats and chains sold separately (see pages 230-231)
- Maximum fall height 96" (2,44 m)
- Minimum area required 24' 3" x 32' (7,39 m x 9,75 m) for Single Bay; add 11' 10" x 32' (3,61 m x 9,75 m) for Additional Bay
- #221292 Single Bay (shown)
- #221293 Additional Bay (shown)



A

B. Arch Tire Swing

- Maximum fall height 78" (1,98 m)
- Minimum area required 22' x 27' 7" (6,71 m x 8,39 m) for Single Bay; add 22' x 22' (6,71 m x 6,71 m) for Additional Bay; add 11' 10" x 30' (3,61 m x 9,14 m) for Additional To/Fro Bay
- #120891 Single Bay (shown)
- #139188 Additional Bay
- #221294 Additional To/Fro Bay



B

C. Single Post Swing Frame

- Seats and chains sold separately (see pages 230-231)
- Maximum fall height 96" (2,44 m)
- Minimum area required 24' 1" x 32' (7,30 m x 9,75 m) for Single Bay; add 11' 8" x 32' (3,56 m x 9,75 m) for Additional Bay
- #177332 Single Bay (shown)
- #177333 Additional Bay (shown)



C

D. 5000 Series Swing Frame

- Optional Anti-Wrap Swing Hangers available
- Seats and chains sold separately (see pages 230-231)

8'-High Beam

- Maximum fall height 96" (2,44 m)
- Minimum area required 31' 10" x 32' (9,70 m x 9,75 m) for Single Bay; add 11' 6" x 32' (3,50 m x 9,75 m) for Additional Bay
- #174011 Single Bay (shown)
- #177323 Additional Bay (shown)

10'-High Beam

- Maximum fall height 120" (3,05 m)
- Minimum area required 33' 2" x 40' (10,10 m x 12,19 m) for Single Bay; add 11' 6" x 40' (3,50 m x 12,19 m) for Additional Bay
- #177324 Single Bay
- #177325 Additional Bay



D

Ages 2-3



A



B

A. Toddler Swings

- Angled chains prevent side-sway
- Seats and chains sold separately (see below)
- Maximum fall height 74" (1,88 m)
- Minimum area required 17' x 21' 9" (5,18 m x 6,63 m)
- #177336

B. Toddler Swing Add-On

- Attaches to the outer post of a Single Post Swing
- Seats and chains sold separately (see below)
- Maximum fall height 74" (1,88 m)
- Minimum area required 10' 8" x 17' (3,25 m x 5,18 m)
- #177337

C. Full-Bucket Seat

- #176038

D. Half-Bucket Seat

- Not IPEMA™ certified
- #177349

E. Full-Bucket Infant Seat

- Intended for children who can sit up unaided
- For use on the Toddler Swing or the Toddler Swing Add-On
- Complies with ASTM F2373
- Not IPEMA certified
- #177352



Ages 2-3

C



Ages 2-5

D



Ages 6-23 Months

E

A. Molded Bucket Seat (2-5) with Harness and Chains

- High seat back and yoke harness specially designed for smaller children
- #218671

B. Molded Bucket Seat (5-12) with Harness and Chains

- High seat back and yoke harness provide greater stability for kids with limited upper-body mobility
- #177351

C. Molded Bucket Seat

- Choose TenderTuff™-coated chain for 8' beam; ProGuard™-finished chain for 8' and 10' beams
- Seat strap sold separately
- #177350
- #111416
Seat Strap Only

D. Flat Molded Seat

- #177348

E. Slash-Proof Belt Seat

- #174018

F. Swing Chain

- 3/16" straight-link-welded, ProGuard™-finished chain by the foot
- #173877

G. TenderTuff-Coated Swing Chain

- Available in five colors



A Ages 2-5



B Ages 5-12



C



D



E



F



G

Safety Note: The seat strap is not IPEMA certified. It is intended for use in supervised areas only. In public playground environments, we recommend a checkout system to reduce vandalism/theft and for safety reasons.

WARNING TO AVOID ENTANGLEMENT, REMOVE AND RETURN STRAP TO OWNER WHEN STRAP IS NOT IN USE.

Ages 2-12



A



B

Nature-Inspired Play

A. Log Balance Beam

- Maximum fall height 12" (0,30 m)
- #173596

B. Log Steppers

- Maximum fall height equals log height
- #173907
8" (0,20 m) height
- #173908
18" (0,46 m) height
- #173909
28" (0,71 m) height

C. Mushroom Steppers

- Available in several heights from 8" to 30" (0,20 m to 0,76 m)
- Maximum fall height equals mushroom height
- #171568-171573

D. Log Crawl Tunnel

- 5' (1,52 m) long; 30" (0,76 m) diameter
- Maximum fall height 41" (1,04 m)
- #173594



C



D

A. Fossil Dig

- 8" (0,20 m) height;
27" (0,69 m) diameter

Dino Eggs

- #170793

Sea Shells

- #170792

T-Rex Bones

- #170791

B. The Stepper™ Rock Climber

- Size 44" x 37" x 26"
(1,12 m x 0,94 m x 0,66 m)
- Maximum fall height 20" (0,51 m)
with 6" (0,15 m) surfacing
- Minimum area required 15'8" x 15'1"
(4,78 m x 4,60 m)
- #160419

C. The Peak™ Rock Climber

- Size 68" x 58" x 42"
(1,73 m x 1,47 m x 1,07 m)
- Maximum fall height 36" (0,91 m)
with 6" (0,15 m) surfacing
- Minimum area required 16'10" x 17'8"
(5,13 m x 5,38 m)
- #160418



Dino Eggs



Sea Shells



T-Rex Bones



B



C

Ages 5-12



A



B

A. The Pointe™ Rock Climber

- Size 84" x 78" x 68"
(2,13 m x 1,98 m x 1,73 m)
- Maximum fall height 56" (1,42 m) with 12" (0,30 m) surfacing
- Minimum area required 22'6" x 23' (6,86 m x 7,01 m)
- #156067

B. The Pinnacle™ Rock Climber

- Size 102" x 87" x 86"
(2,59 m x 2,21 m x 2,18 m)
- Maximum fall height 74" (1,88 m) with 12" (0,30 m) surfacing
- Minimum area required 23' x 24'6" (7,01 m x 7,46 m)
- #156065



Samples of fossil imprints



AdventureScapes® Climbers

- Cables in black only
- Direct bury only

DESIGNS 1-2

- Maximum fall height 56" (1,42 m) with 12" (0,30 m) surfacing

Design 1

- Minimum area required 24' x 30' (7,32 m x 9,14 m)
- #168364

Design 2

- Minimum area required 24' x 39' (7,32 m x 11,89 m)
- #168365

DESIGNS 3-9

- Maximum fall height 74" (1,88 m) with 12" (0,30 m) surfacing

Design 3

- Minimum area required 33' x 38' (10,06 m x 11,58 m)
- #168366

Design 4

- Minimum area required 41' x 33' (12,50 m x 10,06 m)
- #168367

Design 5

- Minimum area required 41' x 40' (12,50 m x 12,19 m)
- #168368

Design 6

- Minimum area required 38' x 51' (11,58 m x 15,54 m)
- #168369

Design 7

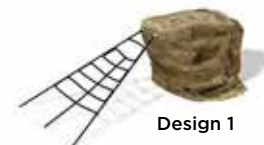
- Minimum area required 43' x 49' (13,11 m x 14,94 m)
- #168370

Design 8

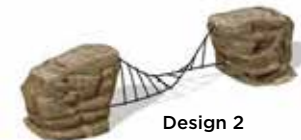
- Minimum area required 41' x 43' (12,50 m x 13,11 m)
- #168371

Design 9

- Minimum area required 42' x 60' (12,80 m x 18,29 m)
- #169105



Design 1



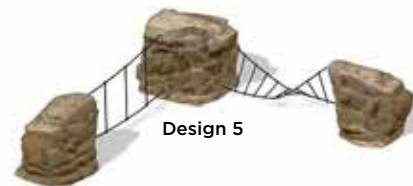
Design 2



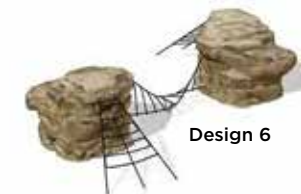
Design 3



Design 4



Design 5



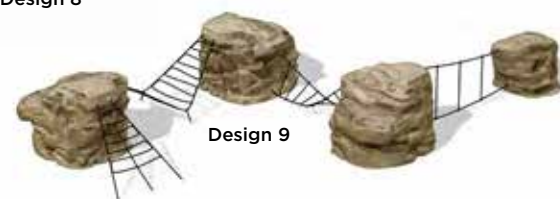
Design 6



Design 7



Design 8



Design 9

Ages 2-12



A



Ages 5-12

B



C



D

Facet™ Forms

There's more to nature than trees, and the unique look of Facet Forms contributes to this new aesthetic. Reminiscent of minerals and geodes, the facets made from precast concrete provide tactile and visual interest.

A. Facet Crawl Tunnel

- 5'7" (1,70 m) long; 32" (0,81 m) inside width
- Maximum fall height 42" (1,07 m)
- #237935

B. Facet Crawl Tunnel with Stepper

- 5'7" (1,70 m) long; 32" (0,81 m) inside width
- Maximum fall height 42" (1,07 m)
- Available with one or two steppers
- #237936

C. Facet Balance Beam

- Maximum fall height 12" (0,30 m)
- Available in single, double or triple configurations
- #237934

D. Facet Steppers

- Maximum fall height equals stepper height
- #237103
18" (0,46 m) height
- #237104
24" (0,61 m) height
- #237105
30" (0,76 m) height

Mobius® Climbers

These artful, anodized aluminum panels bring a unique aesthetic to any play area.

- Easy to install and maintain
- Direct bury only

A. 12-Panel Mobius Climber

- Size 24' 2" x 18' 4" x 10' (7,37 m x 5,59 m x 3,05 m)
- Maximum fall height 120" (3,05 m)
- Minimum area required 36' 2" x 30' 4" (11,02 m x 9,25 m)
- #150638

B. 7-Panel Mobius Climber

- Size 14' x 13' 8" x 10' (4,27 m x 4,17 m x 3,05 m)
- Maximum fall height 120" (3,05 m)
- Minimum area required 26' x 25' 8" (7,92 m x 7,82 m)
- #150637

C. 6-Panel Mobius Climber

- Size 13' 8" x 11' x 10' (4,17 m x 3,35 m x 3,05 m)
- Maximum fall height 120" (3,05 m)
- Minimum area required 25' 8" x 23' (7,82 m x 7,01 m)
- #150636

D. 3-Panel Mobius Climber

- Size 9' 4" x 9' 4" x 4' (2,84 m x 2,84 m x 1,22 m)
- Maximum fall height 48" (1,22 m)
- Minimum area required 21' 4" x 21' 4" (6,50 m x 6,50 m)
- #150635



A



B



C



D

Ages 5-12



A

Aeronet® Climbers

- Steel-reinforced cables are extremely durable and vandal resistant
- Engineered with above-ground tensioning systems for easy maintenance
- Direct bury only

A. Eclipse® Net Climber

- Maximum fall height 96" (2,44 m)
- Minimum area required 26'1" x 26'1" (7,95 m x 7,95 m)
- #249010

B. Lunar Blast® Net Climber

- Cables in red only
- Maximum fall height 96" (2,44 m)
- Minimum area required 39' x 39' (11,89 m x 11,89 m)
- #249012

Note: Consult installation instructions before placing near curbs, sidewalks, etc.

C. Lunar Burst® Net Climber

- Cables in red only
- Maximum fall height 72" (1,83 m)
- Minimum area required 32' x 32' (9,75 m x 9,75 m)
- #248945

Note: Consult installation instructions before placing near curbs, sidewalks, etc.

D. Aeronet Seats

- Add up to 8 seats to any Aeronet climber
- #254562 for Eclipse
- #254560 for Lunar Blast
- #254559 for Lunar Burst



B



C



D

Climbers

A. Hemisphere Climber®

- Cables in black only
- Direct bury only
- Maximum fall height 105" (2,67 m)
- Minimum area required 31' 7" x 18' (9,63 m x 5,49 m)
- #156435

B. Spider Web Climber

- Direct bury only
- Maximum fall height 79" (2,01 m)
- Minimum area required 12' 3" x 18' 1" (3,73 m x 5,51 m)
- #235755

C. Star Seeker Climber

- Direct bury only
- Maximum fall height 116" (2,95 m)
- Minimum area required 28' (8,53 m) diameter
- #148041

D. Funnel Climber™

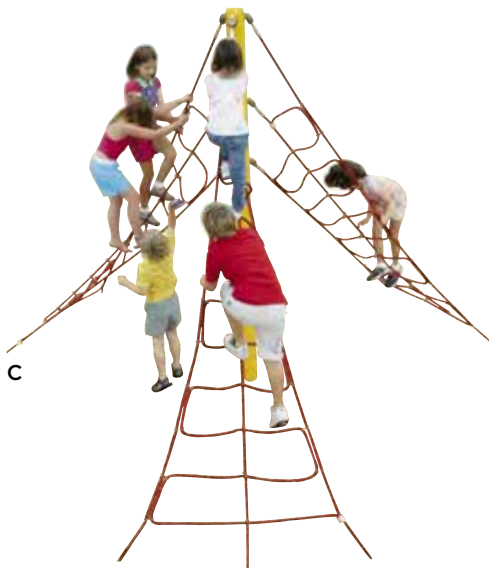
- Available with optional vertical ladders (shown)
- Maximum fall height 91" (2,32 m) with ladder; 72" (1,83 m) without ladder
- Minimum area required 19' 5" x 19' 5" (5,92 m x 5,92 m)
- #144477



A



B



C



D

Ages 5-12



Patent pending

A



B

A. GeoPlex® Climbing Wall

- Maximum fall height 86" (2,18 m)
- Minimum area required 21'10" x 12'9" (6,65 m x 3,89 m)
- #219510

B. Humpty Climbers

- Direct bury only
- Maximum fall height 88" (2,24 m)

Single

- Minimum area required 14' x 16'10" (4,27 m x 5,13 m)
- #100037

Double (shown)

- Minimum area required 14' x 26' (4,27 m x 7,92 m)
- #100037

C. Cascade Climbers

- Direct bury only
- Maximum fall height 93" (2,36 m)

4-Panel

- Minimum area required 24' x 16' (7,32 m x 4,88 m)
- #150977

6-Panel (shown)

- Minimum area required 22' x 24' (6,70 m x 7,32 m)
- #150976

D. Starburst™ Climbers

- Direct bury only

Single

- Maximum fall height 103" (2,61 m)
- #158426

Double (shown)

- Maximum fall height 103" (2,61 m)
- #158426

Triple

- Maximum fall height 108" (2,74 m)
- #158426

Quad

- Maximum fall height 106" (2,69 m)
- Minimum area required 20' (6,09 m) diameter
- #158426



C



D

A. JigJag Climbers

- Maximum fall height 90" (2,29 m)

Single

- Minimum area required 22'9" x 15' (6,91 m x 4,34 m)
- #201889

Double (shown)

- Minimum area required 33' x 15' 6" (10,04 m x 4,71 m)
- #201993

B. Vertical Pipe Climbers

- Direct bury only
- Minimum area required for a single climber 13' x 14' (3,96 m x 4,27 m)

4'-High

- Maximum fall height 48" (1,22 m)
- #100040

6'-High

- Maximum fall height 72" (1,83 m)
- #100040

C. Sky Rail Climber

- Direct bury only
- Maximum fall height 108" (2,74 m)
- Minimum area required 21'5" x 22'10" (6,53 m x 6,96 m)
- #146813

D. Rainbow Climbers

- Direct bury only

4'-High

- Maximum fall height 45" (1,14 m)
- Minimum area required 19'8" x 13'8" (5,99 m x 4,17 m)
- #100038

6'-High

- Maximum fall height 75" (1,91 m)
- Minimum area required 24'2" x 13'8" (7,37 m x 4,17 m)
- #100038



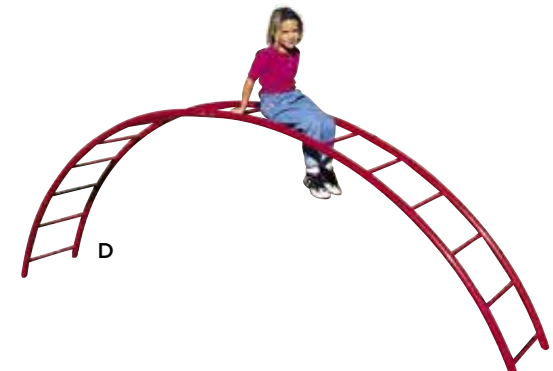
A



B



C



D

Ages 5-12



Ages 2-12

A

9-Block



A

12-Block



A

16-Block



B



C

Ages 2-5



D



E

A. Block Climbers

9-Block

- Maximum fall height 24" (0,61 m)
- Minimum area required 16' x 16' (4,88 m x 4,88 m)
- #117966

12-Block

- Maximum fall height 32" (0,81 m)
- Minimum area required 17' x 17' (5,18 m x 5,18 m)
- #117966

16-Block

- Maximum fall height 40" (1,02 m)
- Minimum area required 18' x 18' (5,49 m x 5,49 m)
- #117966

B. Noodle Pod® Steps

- Direct bury only
- Maximum fall height equals pod height (8" 16" or 24") (0,20 m, 0,41 m or 0,61 m)
- Minimum area recommended 14' 5" (4,39 m) diameter
- #158108
- One Step (shown)
- #164157
- Two Steps

C. Wee Planet™ Climber

- Maximum fall height 53" (1,35 m)
- Minimum area required 16' (4,88 m) diameter
- #200677

D. Climbing Wall

- Maximum fall height 84" (2,13 m)
- Minimum area required 12' 5" x 20' (3,78 m x 6,10 m)
- #153354

E. Pod Climber

- Available in several heights from 8" to 30" (0,20 cm to 0,76 m)
- Maximum fall height equals pod height
- #120710 - #120713 and #158997 - #158998

Sensory Play

Pulse®

Three sensory-rich games bring interactivity to the playground in a whole new way. Pulse helps kids develop hand-eye coordination, action/reaction skills, and healthy sportsmanship through sounds, lights and touch.

- Multi-color LED lights
- Built-in speakers
- Touch-activated sensors
- Durable, impact-resistant
- Tested to extreme demands of all climates
- Waterproof
- Operates on safe, low-voltage DC power
- Easy installation
- No surfacing required

A. Pulse Tempo

- Kids respond to the musical cues, then move and groove to the entertaining sound and light show
- Multisensory
- Up to 6 players
- Minimum area recommended 23'10" x 7'10" (7,26 m x 2,39 m)
- #186569

B. Pulse Table Tennis

- Wheelchair accessible
- A healthy dose of competition will motivate kids to beat the lights
- Multisensory
- 2-4 players
- Minimum area recommended 15'10" x 14'3" (4,83 m x 4,34 m)
- #186568

C. Pulse Tennis

- Bouncing lights and court sounds energize kids in this head-to-head game of motion
- Multisensory
- 2-8 players
- Minimum area recommended 22'10" x 16'11" (6,96 m x 5,16 m)
- #186567



A



B

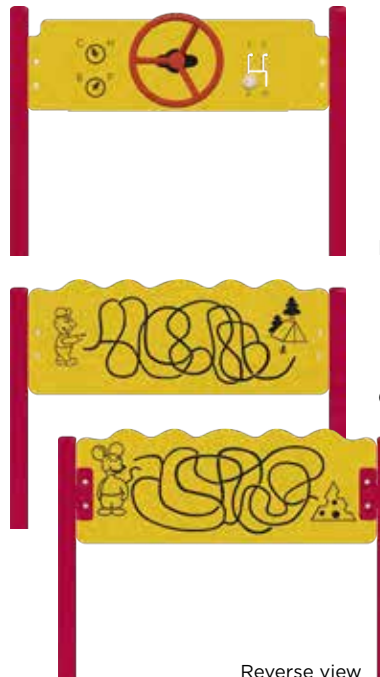


C Ages 5-12

Ages 2-12



A



Reverse view

A. Cozy Dome®

- A climber on the outside; a quiet, cozy space on the inside
- Maximum fall height 46" (1,17 m)
- Minimum area recommended 18' 6" (5,64 m) diameter
- #168099

B. Navigator Reach Panel

- Wheelchair accessible
- Rotating steering wheel with moveable gearshift knob
- #184886

C. Trail Tracker® Reach Panel

- Wheelchair accessible
- Mazes on each side develop hand-eye coordination and decision-making skills
- #184885

D. Chatter Noodle® Talk Tubes

- Wheelchair accessible
- Maximum of 40' between posts
- #158106

E. Roller Table™

- Great activity for kids with mobility impairments
- Helps develop "skin map" of tactile sensory receptors
- Maximum fall height 16-1/2" (0,42 m)
- Minimum area required 25' 2" x 14' 10" (7,67 m x 4,52 m)
- #176457



Ages 5-12

D



Ages 5-12

E

A. Sensory Play Center®

- Choose any number of interactive panels to create an exciting multisensory play experience
- Minimum area required 16' x 4' (4,88 m x 1,22 m) for a 4-panel configuration
- U.S. Patent number 8,936,502
- #168100
Poly Wall Panel
- #168101
Poly End Panel

B. Fun Mirror Panel®

- Rotatable, two-sided concave/convex mirror engages peripheral vision and visual tracking
- #168103

C. Color Splash Panel™

- Brilliant color-changing wheel on one side; black-and-gray optical illusion on the other
- #177715

D. Kaleidospin Panel®

- Rotating prisms provide visual stimulation
- #168108

E. Optigear Panel®

- Five rotating gears
- #168104



A



B



C



D



E

Ages 2-12



A



B



C

A. Imagination Table™

- Play station helps kids develop socially and creatively
- #168105

B. Marble Panel®

- Spinning marbles offer a sensory-rich visual, auditory and tactile experience
- #168662

C. Rain Sound Wheel Panel™

- Steel drum rotates to create soothing rain sound
- Different geometric designs on each side
- #177721

D. Bongo Panel®

- Large and small bongos provide deep auditory stimulation
- #168107

E. Xylofun Panel®

- Musical scale promotes auditory stimulation
- #168106

F. Alphamaze Panel® and Labyrinth Panel

- Two-sided panel promotes eye-hand coordination along with tactile fun
- #168102

Bongo and Alphamaze Panel®

- Bongos on one side (image D); letters, numbers and shapes on the other (top image F)
- #168989

Bongo and Xylofun Panel®

- Bongos on one side (image D); xylophone on the other (image E)
- #168666

Xylofun and Alphamaze Panel®

- Xylophone on one side (image E); letters, numbers and shapes on the other (top image F)
- #168990



D



E



F

Reverse view



A. Clear Paint Panel

- Includes Permalene® paint trays (paint and cups not included)
- Size 10" x 2'10" (0,25 m x 0,86 m)
- #112621

B. Splash Circuit™ Sand and Water Station

- Wheelchair accessible
- Size 5' x 5'6" (1,52 m x 1,68 m)
- Minimum area recommended 7' (2,13 m) diameter
- #126202

C. Turtle Sand Table

- Size 1'7" x 2'8-1/2" (0,48 m x 0,83 m)
- Direct bury only
- Minimum area recommended 6' (1,83 m) diameter #116568

D. Sandbox

- Optional plastic screen helps keep sand clean
- #120458
4' Square Sandbox
- #120458
8' Square Sandbox
- #120458
8' Square Sandbox with Play Table (shown)
- #120894
Play Table Only

E. Elevated Sand Table

- Wheelchair accessible
- Sand bucket rail direct bury only
- Size 89" x 57" (2,26 m x 1,45 m)
- Minimum area recommended 14' (4,27 m) diameter #136233

F. Wiggle Worm Crawl Tunnel

- Optional Wiggle Worm head available (shown)
- Maximum fall height 18" (0,46 m)
- Minimum area required with head 14'6" x 22'3" (4,42 m x 6,78 m) #120418

G. Crawl Tunnels

- Maximum fall height 7" (0,18 m)
- Straight**
- Minimum area required 14'4" x 14'7" (4,37 m x 4,45 m) #100005
- 90° Curve**
- Minimum area required 16'1" x 16'1" (4,91 m x 4,91 m) #100005



A



B



C



D



E



F



G

Fitness

FitCore™ Extreme

Exciting obstacles designed for teens and older, or right-sized for kids ages 5 to 12. Choose from our predesigned courses or create your own grouping of obstacles. Instructional signs included.

A. Welcome Sign

- 5 to 12 Years, #246587
- 13+ Years, #246315

B. Vertical Cargo Net

5 to 12 Years (shown)

- Maximum fall height 118" (3,00 m)
- Minimum area required
12'6" x 22'9" (3,81 m x 6,93 m)
- #244192

13+ Years

- Maximum fall height 118" (3,00 m)
- Minimum area required
ASTM 13'1" x 20'10" (3,99 m x 6,35 m)
EN 16'11" x 27'4" (5,16 m x 8,33 m)
- #243019

C. Angled Balance Beam

5 to 12 Years (shown)

- Maximum fall height 16" (0,41 m)
- Minimum area required for one beam
12'3" x 16'11" (3,73 m x 5,16 m)
- #244196

13+ Years

- Maximum fall height 24" (0,61 m)
- Minimum area required for one beam
ASTM 12'11" x 17'7" (3,94 m x 5,36 m)
EN 10'3" x 14'11" (3,12 m x 4,55 m)
- #243908



A



B



C

Ages 5-12 and 13+



A

**A. Over Under Bars****5 to 12 Years (shown)**

- Maximum fall height 31" (0,79 m)
- Minimum area required for one pair 15'8" x 18'4" (4,78 m x 5,59 m)
- #244198

13+ Years (shown)

- Maximum fall height 43" (1,09 m)
- Minimum area required for one pair ASTM 16'4" x 22'4" (4,98 m x 6,81 m)
EN 13'8" x 16'4" (4,17 m x 4,98 m)
- #243909

B. Rope Climb**5 to 12 Years (shown)**

- Maximum fall height ASTM 120" (3,05 m) / EN 81" (2,05 m)
- Minimum area required 15'3" x 17'4" (4,65 m x 5,28 m)
- #244199

13+ Years

- Maximum fall height ASTM 132" (3,35 m) / EN 93" (2,35 m)
- Minimum area required ASTM 12'0" diameter (3,66 m diameter)
- EN 15'0" diameter (4,57 m diameter)
- #243910

C. Spider Walk**5 to 12 Years**

- Maximum fall height 96" (2,44 m)
- Minimum area required 20' 3" x 23' 6" (6,17 m x 7,16 m)
- #244200

13+ Years (shown)

- Maximum fall height ASTM 96" (2,44 m) / EN 56" (1,44 m)
- Minimum area required ASTM 14' 9" x 24' 2" (4,50 m x 7,37 m)
EN 14' 10" x 21' 6" (4,52 m x 6,55 m)
- #244061



B



C

A. Angled Overhead Ladder

5 to 12 Years (shown)

- Maximum fall height 85" (2,16 m)
- Minimum area required 16'1" x 34'0" (4,90 m x 10,36 m)
- #244194

13+ Years (shown)

- Maximum fall height ASTM 107" (2,72 m) / EN 68" (1,72 m)
- Minimum area required ASTM 13'3" x 34'8" (4,04 m x 10,57 m) EN 14'11" x 32'10" (4,55 m x 10,01 m)
- #243907

B. A-Frame Cargo Net

5 to 12 Years (shown)

- Maximum fall height 118" (3,00 m)
- Minimum area required 22'9" x 23'7" (6,93 m x 7,19 m)
- #244191

13+ Years (shown)

- Maximum fall height 118" (3,00 m)
- Minimum area required ASTM 20'9" x 24'3" (6,32 m x 7,39 m) EN 27'4" x 28'1" (8,33 m x 8,56 m)
- #243016



A



B

Ages 5-12 and 13+



A



Age 13+

C



B



Age 13+

D

A. High Step**5 to 12 Years (shown)**

- Maximum fall height 11" (0,28 m)
- Minimum area required 18'7" x 26'7" (5,66 m x 8,10 m)
- #244201

13+ Years (shown)

- Maximum fall height 11" (0,28 m)
- Minimum area required
ASTM 13'5" x 28'1" (4,09 m x 8,56 m)
EN 7'5" x 22'1" (2,26 m x 6,73 m)
- #244064

B. Jump Hang**5 to 12 Years (shown)**

- Maximum fall height 111" (2,82 m)
- Minimum area required 17'1" x 24'3" (5,21 m x 7,39 m)
- No launch ramp for this age group
- #244193

13+ Years

- Maximum fall height 101" (2,57 m)
- Minimum area required
ASTM 17'9" x 34'10" (5,41 m x 10,62 m)
EN 19'9" x 34'6" (6,02 m x 10,52 m)
- #243190

C. Unstable Bridge**13+ Years**

- Maximum fall height
ASTM 91" (2,31 m) / EN 52" (1,31 m)
- Minimum area required
ASTM 13'7" x 24'5" (4,14 m x 7,44 m)
EN 14'3" x 21'9" (4,34 m x 6,63 m)
- #244063

D. Quintuple Steps**13+ Years**

- Maximum fall height 37" (0,94 m)
- Minimum area required
ASTM 20'4" x 35'4" (6,20 m x 10,77 m)
EN 17'8" x 29'5" (5,38 m x 8,97 m)
- #244062

A. Peg Bridge

5 to 12 Years (shown)

- Maximum fall height 72" (1,83 m)
- Minimum area required 14' 6" x 24' 4" (4,42 m x 7,42 m)
- #244195

13+ Years

- Maximum fall height 90" (2,29 m) ASTM/51" (1,29 m) EN
- Minimum area required 13' 5" x 25' 0" (4,09 m x 7,62 m) ASTM 12' 6" x 22' 4" (3,81 m x 6,81 m) EN
- #243862

B. Globe Grasp

13+ Years

- Maximum fall height ASTM 107" (2,72 m) / EN 68" (1,72 m)
- Minimum area required ASTM 13' 7" x 24' 5" (4,14 m x 7,44 m) EN 15' 3" x 22' 9" (4,65 m x 6,93 m)
- #243870

C. Wheel Bridge

13+ Years

- Maximum fall height ASTM 120" (3,05 m) / EN 81" (2,05 m)
- Minimum area required ASTM 14' 7" x 26' 6" (4,45 m x 8,08 m) EN 15' 7" x 27' 6" (4,75 m x 8,38 m)
- #243899

D. Ledge Hanger

13+ Years

- Maximum fall height ASTM 137" (3,48 m) / EN 98" (2,48 m)
- Minimum area required ASTM 16' 0" x 32' 2" (4,88 m x 9,80 m) EN 14' 10" x 32' 5" (4,52 m x 9,88 m)
- #243778



A



B Age 13+



C Age 13+



D Age 13+



HealthBeat® Outdoor Fitness System

Health and wellness, family fun and a sense of community come together with this comprehensive system.

NOTE: Order HealthBeat post separately based on station configuration.

A. Welcome Sign

• #192464

B. Stretch

- Provides structured stretching of multiple muscles in one fitness station
- Promotes flexibility and range of motion
- EN version without foot pedestal
- Maximum fall height 96" (2,44 m)
- Minimum area required
 US 12' 8" x 17' 11" (3,86 m x 5,46 m);
 EN 13' 8" x 20' 5" (4,17 m x 6,22 m)
- #192462



A



B

A. Assisted Row/Push-Up

- Great upper-body workout
- Exercises multiple muscles
- Provides several activities in one station
- Maximum fall height 53" (1,35 m)
- Minimum area required
US 17'2" x 17'2" (5,23 m x 5,23 m);
EN 20'3" x 11'2" (6,17 m x 3,40 m)
- #192452

B. Pull-Up/Dip

- Highly effective upper-body workout
- Allows for multiple strength-building exercises
- Maximum fall height 81" (2,06 m)
- Minimum area required
US 11'6" x 12'3" (3,51 m x 3,73 m);
EN 15'9" x 14'9" (4,80 m x 4,50 m)
- #192460

C. Chest/Back Press

- Builds equal endurance for opposing muscle groups
- Adjustable resistance levels
- Minimum area required
US 6'8" (2,03 m) diameter;
EN 6'8" (2,03 m) diameter
- U.S. Patent number 9,802,074 and 9,907,992
- #192456

D. Ab Crunch/Leg Lift

- Works both upper and lower abdominals
- Provides two different activities in one fitness station
- Builds core strength
- Maximum fall height 21" (0,54 m)
- Minimum area required
US 13'3" x 12'8" (4,04 m x 3,86 m);
EN 7'8" x 6'8" (2,34 m x 2,03 m)
- #192451



A



B



C



D

Ages 13+



A



B

A. Plyometrics

- Increases muscle power
- Develops strength for explosive motions such as running and jumping
- Maximum fall height 16" (0,41 m)
- Minimum area required
US 16' x 18' (4,88 m x 5,49 m);
EN 10' x 12' (3,05 m x 3,66 m)
- #192459

B. Elliptical

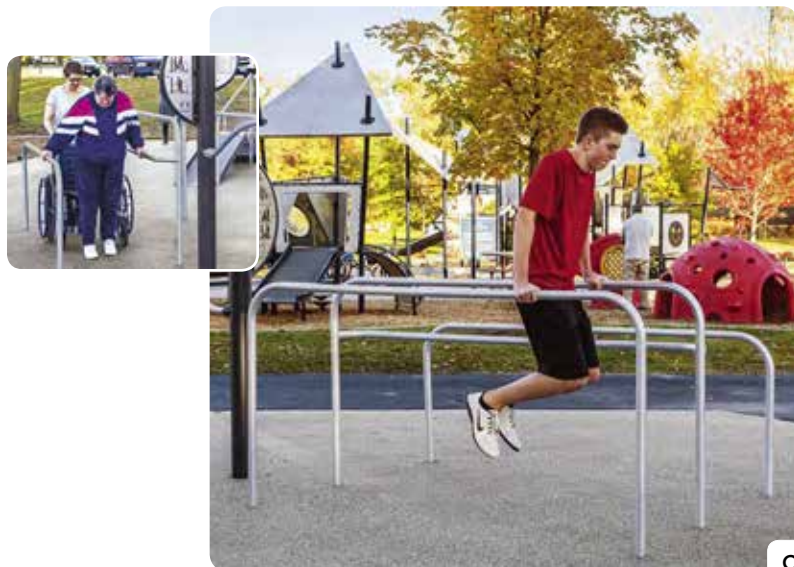
- Engages the lower body, upper body and core muscles
- Encourages muscle coordination
- Doesn't impact joints
- Adjustable resistance levels
- Maximum fall height 20" (0,51 m)
- Minimum area required
US 13' x 14' 1" (3,96 m x 4,29 m);
EN 16' 1" x 10' 1" (4,90 m x 3,07 m)
- U.S. Patent number 9,802,074 and 9,907,992
- #192457

C. Parallel Bars

- Two bar levels accommodate beginner, advanced and rehabilitation users
- Maximum fall height 46" (1,17 m)
- Minimum area required
US 19' 8" x 14' 3" (5,99 m x 4,34 m);
EN 15' 4" x 13' 3" (4,67 m x 4,04 m)
- #192453

D. Hand Cyclers

- Builds cardiovascular health and muscle strength
- Adjustable resistance levels
- Wheelchair accessible
- Minimum area required
US 6' 9" x 6' 8" (2,06 m x 2,03 m);
EN 6' 9" x 6' 8" (2,06 m x 2,03 m)
- U.S. Patent number 9,802,074 and 9,907,992
- #205938



C



D

A. Tai Chi Wheels

- Promotes flexibility
- Enhances relaxation and meditation
- Evenly tones muscles without strain
- Wheelchair accessible
- Minimum area required
US 6' 8" (2,03 m) diameter;
EN 6' 8" (2,03 m) diameter
- #192463

B. Mobility

- Exercises both the balancing area of the brain and the nervous system
- Great exercise for joint replacement rehabilitation
- TenderTuff™-coated platform in gray only
- Maximum fall height 22" (0,56 m)
- Minimum area required
US 14' 10" x 22' 11" (4,52 m x 6,99 m);
EN 8' 6" x 16' 11" (2,59 m x 5,17 m)
- #192458

C. Cardio Stepper

- Provides a cardiovascular / step aerobic workout
- Adjustable resistance levels
- Maximum fall height 22" (0,56 m)
- Minimum area required
US 12' 8" (3,86 m) diameter;
EN 6' 8" (2,03 m) diameter
- U.S. Patent number 9,802,074 and 9,907,992
- #192455

D. Squat Press

- Builds leg and hip muscle endurance
- Adjustable resistance levels
- Minimum area required
US 8' 3" x 6' 8" (2,51 m x 2,03 m);
EN 8' 3" x 6' 8" (2,51 m x 2,03 m)
- U.S. Patent number 9,802,074 and 9,907,992
- #192461

E. Balance Steps

- Use as a balance beam or for step aerobics
- Builds coordination and balance
- Maximum fall height 16" (0,41 m)
- Minimum area required
US 18' 8" x 12' 8" (5,69 m x 3,86 m);
EN 12' 8" x 6' 8" (3,86 m x 2,03 m)
- #192454



A



B



C



D



E

Ages 5-12



A



B

A. Power Lifter™ Chinning Bar

- Maximum fall height 73" (1,85 m)

Single Bay

- Minimum area required 18'9" x 12'10" (5,70 m x 3,91 m)
- #160212

Double Bay

- Minimum area required 25' x 12'10" (7,62 m x 3,91 m)
- #160213

Triple Bay

- Minimum area required 29'4" x 12'10" (8,93 m x 3,91 m)
- #160216

Quadruple Bay

- Minimum area required 35'8" x 12'10" (10,84 m x 3,91 m)
- #160219

B. Drop Shot

- 3' (0,91 m) diameter funnel
- 9'6" (2,90 m) tall
- Maximum ball size 10" (0,25 m) diameter
- Direct bury only
- Balls not included
- Minimum area required 25' (7,62 m) diameter
- #100042

C. Jump Touch

- #100057

D. Step-Up

- Maximum fall height 25" (0,64 m)
- Minimum area required 16'2" x 15'8" (4,93 m x 4,78 m)
- #137965

E. Curved Balance Beam

- Maximum fall height 12" (0,30 m)
- Minimum area required 14'6" x 21'4" (4,42 m x 6,50 m)
- #100041



C



D



E

Ages 2-12

A. Handhold/Leg Lift

- Maximum fall height 66" (1,68 m)
- Minimum area required 13' x 12'10" (3,96 m x 3,91 m)
- #137961

B. Horizontal Ladder Station

- Maximum fall height 67" to 79" (1,70 m to 2,01 m)
- Minimum area required 22'8" x 15'11" (6,91 m x 4,85 m)
- #137962

C. Chin-Up

- Maximum fall height 77" (1,95 m)
- Minimum area required 19'5" x 12'6" (5,92 m x 3,81 m)
- #137958

D. Parallel Bar

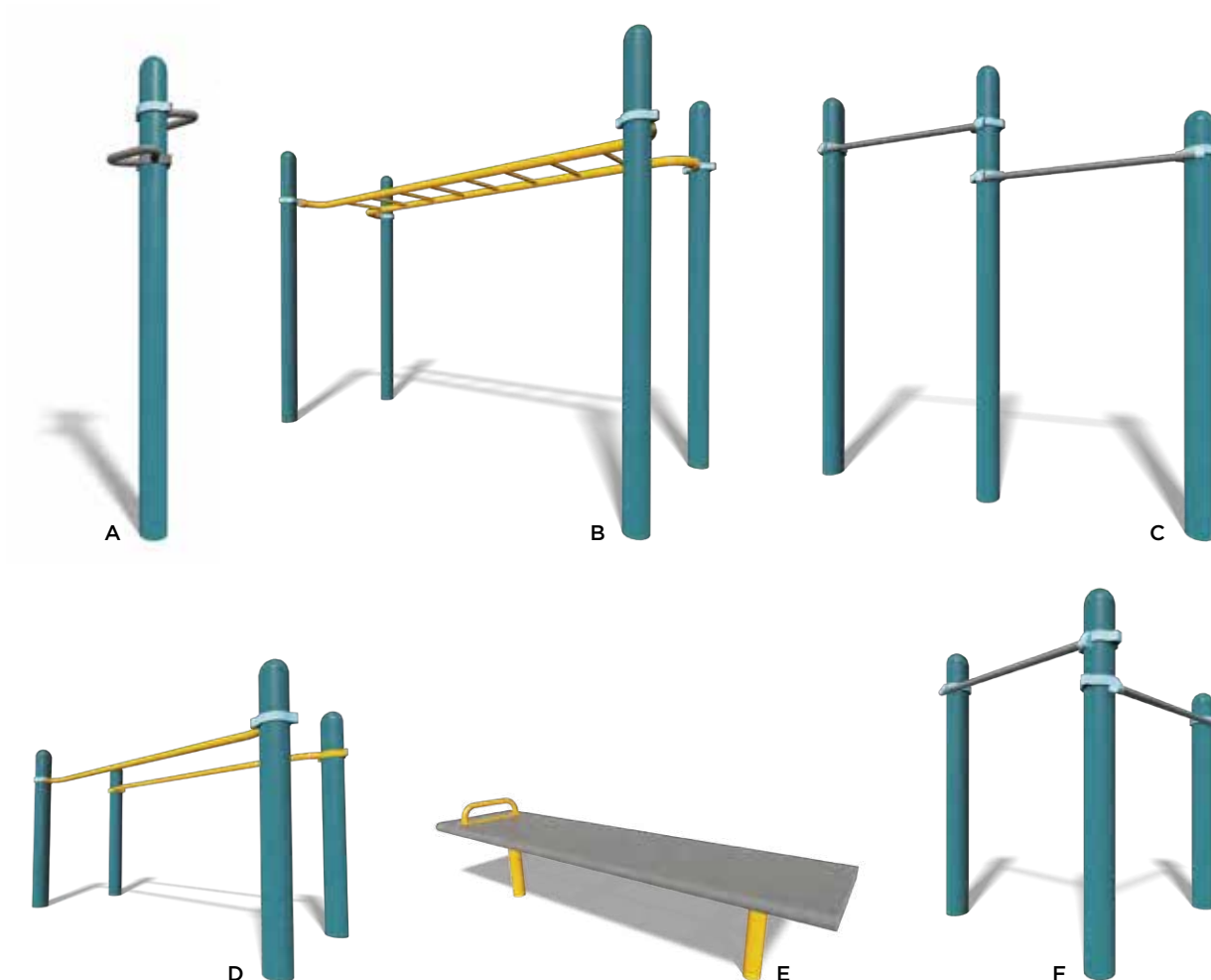
- Maximum fall height 43" (1,09 m)
- Minimum area required 19'5" x 14'11" (5,92 m x 4,55 m)
- #137960

E. Sit-Up/ Push-Up Bench

- Maximum fall height 16" (0,41 m)
- Minimum area required 18' x 13'4" (5,49 m x 4,06 m)
- #100058

F. Spring-Up

- Maximum fall height 51" (1,30 m)
- Minimum area required 16'2" x 16'2" (4,93 m x 4,93 m)
- #137959



Site Furnishings

Facet™ Forms

A. Facet Bench

- Available as Single, C-shaped double or S-shaped double
- Single is 18" H x 92" L (0,46 m x 2,34 m)
- C-shaped double is 18" H x 160" L (0,46 m x 4,06 m)
- S-shaped double is 18" H x 165" L (0,46 m x 4,19 m)
- Antique Mahogany Recycled Plastic Lumber
- #235526



Designer Collection

B. Arches Bench

- 18-34" H x 70" L (0,48 m x 1,78 m)
- #185915

C. Arches Recycling Receptacle and Arches Litter Receptacle

- 32-gallon liner
- #186587 Recycling
- #186586 Litter

D. Arches Bike Rack

- #185654 Single
- #185653 Triple (shown)





A



B



C



D



Nature-Inspired Collection

A. ♻️ Poly Picnic Table

- A variety of configurations for wheelchair access
- #113139

B. ♻️ Toddler Picnic Table

- Seats 13" high; 30" long
- #175949

C. Arm Rest

- Steel arm optional on Wood-Grain, Recycled Contour Series or TenderTuff™-coated benches with backs
- #114767

D. ♻️ Wood-Grain Bench

- 70" or 94" lengths, with or without back
- Available with or without arm rests
- Cedar only or cedar/mink blend
- #186583

E. ♻️ Recycled Contour Series Bench

- 60" (1,52 m) or 96" (2,44 m) lengths
- Available with or without back
- Available with or without arm rests
- #111640



E



A. Log Bench

- Precast Concrete
- 16" H x 72" L (0,41 m x 1,83 m)
- #173595

B. Acorn Seat

- Precast Concrete
- 16-1/2" (0,42 m) high
- #186579

C. Leaf Bike Rack

- TenderTuff-coated steel
- #185671
- (two shown)

D. Wood-Grain Recycling Receptacle and Wood-Grain Litter Receptacle

- 32-gallon liner
- Lids in acorn only
- #186585 Recycling
- #186584 Litter

E. Litter Receptacle

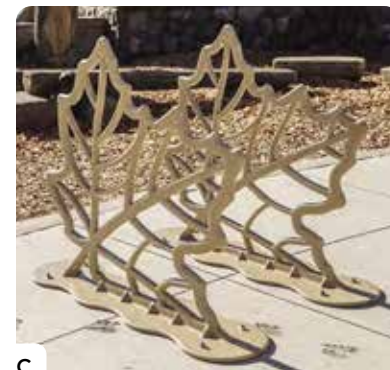
- 24-gallon liner
- Optional dome available in brown only (shown)
- Direct bury only
- #100094 Receptacle
- #100095 Optional Dome



A



B



C



D



E



A



B

Vivid Collection

A. Kaleidoscope Bench

- 73% post-consumer recycled Permalene® material
- 60" (1,52 m) length, with or without back
- Available with or without handles
- Select any recycled Permalene color for end panels; random multi-color pieces of Brick, Tangerine, Leaf, Acorn, Limon and Denim for seat and back
- #186588

B. Kaleidoscope Recycling Receptacle and Kaleidoscope Litter Receptacle

- 32-gallon liner
- Select two recycled Permalene colors; alternating pattern as shown
- #186590 Recycling
- #186589 Litter



A. TenderTuff™ Bench

- 72" (1,83 m) or 92" (2,34 m) lengths, with or without back
- Available with or without arm rests (shown on page 262)
- #141683



A



B. TenderTuff Picnic Table

- 72" (1,83 m) or 92" (2,34 m) tables with 72" or 92" seats
- 92" tables with 72" seats provide easy wheelchair access
- #141684



B



C

C. Square Picnic Table

- 42" (1,07 m) - square tabletop; 32" (0,81 m) - long seats
- A variety of configurations for wheelchair access
- #154345

D. Loop Rack

- Holds seven bikes
- #100102



D



E

E. TenderTuff Litter Receptacle

- 32-gallon liner
- #141685 Receptacle
- #141686 Optional Cover



SkyWays® and CoolToppers® Shade Products

Landscape Structures shade products provide cool and reliable shade for any play, rest or activity area. Available as independent structures or integrated into play equipment in both standard and custom solutions. Visit playlsi.com or view the SkyWays Shade catalog for more information.

- Durable, breathable, weather-resistant polyethylene material
- Designed to block up to 90% of UV rays and keep playground temperatures 30 degrees cooler
- Remove fabric when wind speed is expected to exceed 90 mph and, in heavy snowbelt areas, during snow season
- Direct bury only
- Not IPEMA™ certified





Visit playlsi.com for additional products, photos, videos and more • 888.438.6574



A



B



C

Signs

A. NEW DigiFuse® Warning Plates

- These durable plates are provided at no charge with playsystems and select freestanding equipment, ensuring important safety information is legible year after year.

B. Playground Welcome/ Safety Sign

- FREE with purchase of any qualifying Landscape Structures playsystem
- #182504

C. Personalized Signs

- Add personality and valuable information to any site
- Can accommodate a wide range of text, logos and graphics
- Variety of materials available



C



Surfacing

A. PebbleFlex® Safety Surfacing

- Allows easy access for wheelchairs and walkers
- Ensures adequate protection for fall heights up to 12' and meets all federal regulatory standards
- Comprised of tiny spherical aliphatic polyurethane pebbles that are highly abrasion resistant and UV stable
- Proprietary bond process is significantly stronger than typical non-bonded rubber granule surfacing
- Withstands detergent cleaning solutions and sustains power-washing of up to 2800 psi
- Cushion layers are made from 100% post-consumer recycled material; pebbles are made of 20% post-industrial recycled material, and are all recyclable
- U.S. Patent number 8,962,750
- Installation in partnership with Surface America



SURFACE AMERICA
Recreational & Athletic Surfacing for Maximum Performance

B. TuffTimbers™ Access Wedge

- Attaches to standard TuffTimbers edging for wheelchair access
- Available in black only
- #130799

C. TuffTimbers Edging

- 4' x 12" x 4" sections
- Available in black only
- #119214
TuffTimbers Edging
- #100626
30" Stake



A



B



C



TuffTimbers edging cross section

2020 Featured Palettes

Tour through carefully curated palettes and discover how color can tie your whole playground together. All of our colors take a cue from nature—from green trees and blue sky to minerals, birds, spices, fruits and more—to create vibrant hues that stimulate the senses and perfectly coordinate with the outdoors. See more palette options on [playlsi.com](https://www.playlsi.com).



NEW Palette BU
Metallic Silver • Lagoon • Sky • Gray



NEW Palette BV
Metallic Silver • Dune • Limon • Acorn • Leaf • Brown • Tan



NEW Palette BW
Metallic Silver • Tangerine • Limon • Gray • Orange



Palette AA
Metallic Silver • Limon • Denim • Gray



Palette AF
Brown • Dune • Acorn • Tan



Palette AH
Brown • Limon • Leaf



Palette AM
Tangerine • Metallic Silver • Limon • Gray



Palette AQ
Buttercup • Limon • Grass • Leaf • Gray • Metallic Silver



Palette AS
Metallic Silver • Orange • Carbon • Denim • Gray



Palette AT
 Sky • Denim • Lagoon • Acorn • Brown



Palette AU
 Buttercup • Grass • Acorn • Leaf • Brown



Palette AV
 Lagoon • Sky • Tangerine • Gray • Denim



Palette AW
 Carbon • Lagoon • Sky • Limon • Gray • Metallic Silver



Palette AY
 Limon • Metallic Silver • Lagoon • Gray



Palette BD
 Peacock • Buttercup • Lagoon • Gray



Palette BF
Dune • Paprika • Acorn • Tangerine • Brown



Palette BG
Metallic Silver • Lagoon • Sky • Buttercup • Gray



Palette BH
Paprika • Limon • Peacock • Gray • Metallic Silver



Palette BN
Sky • Lagoon • Metallic Silver • Limon • Grass • Gray



Palette BP
Tangerine • Sky • Lagoon • Gray



Palette BQ
Vanilla • Tangerine • Peacock • Lagoon • Acorn • Brown



A. NEW Polycarbonate Panels

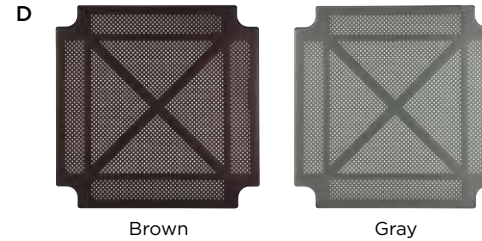
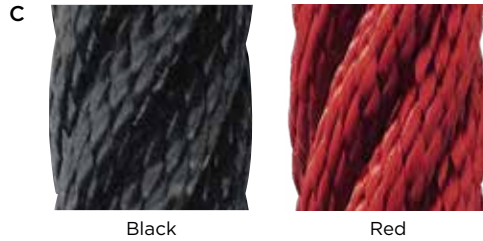
- Hedra™ product line option
- Translucent panel provides visibility into structure as well as light and color play

B. NEW Bamboo Panels

- Hedra product line option
- Laminated Bamboo adds texture and a natural aesthetic
- Rapidly renewable resource

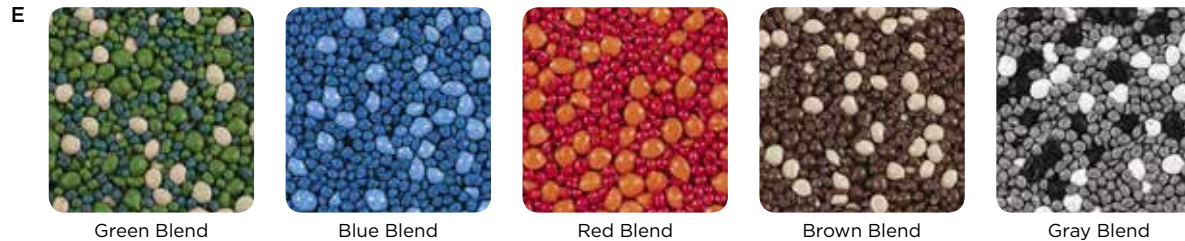
C. Steel-Reinforced Cables

- Made of tightly woven, polyester-wrapped, six-stranded galvanized-steel
- Abrasion-resistant, color-stable cables are extremely durable and vandal resistant
- Some product available in black only or red only—see specific product for details



D. Steel Decks

- The heaviest, thickest decks for long-lasting safety
- Flange-formed from 12-gauge steel with safe, rounded corners
- Reinforced with .105" x 2" ribs welded on cross for superior strength and a consistently flat surface



E. PebbleFlex® Safety Surfacing

- Allows easy access for wheelchairs and walkers
- Ensures adequate protection for fall heights up to 12' and meets all federal regulatory standards
- Comprised of tiny spherical aliphatic polyurethane pebbles that are highly abrasion resistant and UV stable

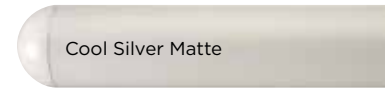
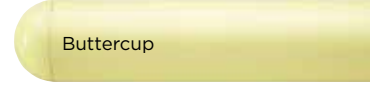


F. Recycled Plastic Lumber

- Looks like wood, but lasts longer and is easier to clean
- 100% recycled high-density UV-stabilized polyethylene material to prevent warping in direct sun

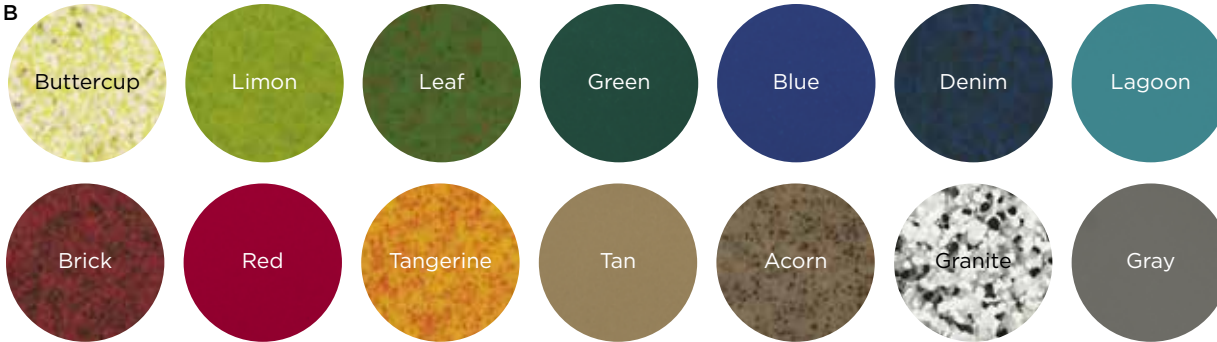
ProShield® Colors

- Specifically designed to withstand the demands of extreme heat, harsh climates, moisture and UV exposure
- ProShield finish combines a specially formulated primer with a high-quality, architectural-grade, Super-Durable, TGIC polyester powdercoat
- No lead-based paints





A



B



C

A. Recycled Permalene® Color Panels

- Distinctive black core results from combining and recycling colored plastic—waste that would otherwise end up in landfills

B. Polyethylene

- For slides, tunnels, roofs, etc.
- Architectural-grade pigments contain no heavy metals and provide longest-lasting, UV-stable, vibrant color
- 100% recyclable

C. TenderTuff™ Coating

- For swing chains, handholds, pipe barriers, wheels, rings, etc.
- Insulates against temperature extremes and provides a safer grip surface compared to painted metal
- Meets all safety standards and complies with Public Law No. 110-314, Consumer Product Safety Improvement Act of 2008

**A. SkyWays® and CoolToppers®
Shade Products Fabrics**

- Designed to block up to 97% of UV rays and keep playground temperatures 30 degrees cooler

**B. SkyWays and CoolToppers
Shade Products Flame Retardant
Fabrics**

- Stringently tested and conforms to FR standards worldwide



The team to serve you

Our playground consultants are an essential part of our team. They are among the most knowledgeable in the industry and know exactly what it takes to help you create a play experience that children will love and communities will appreciate for years to come. Get in touch with your Landscape Structures playground consultant to make your playground vision a reality.

Play Shapes Us





The contracts to assist you

Landscape Structures is proud to have been awarded several national purchasing contracts. These contracts are nationally available, competitively bid, government-to-government procurement services. Through these contracts, Landscape Structures offers the best pricing on all of our quality products while satisfying your bid law requirements.



Landscape Structures, #030117-LS



No one sets the bar higher

We're proud to lead the way and promote healthy lifestyles for children and families, a cleaner environment and strong communities. We're a founding member of the International Play Equipment Manufacturers Association (IPEMA™), an organization that helps ensure quality and safety for all playground equipment. In addition, we are certified to both ISO 9001:2015 and ISO 14001:2015 standards, which help ensure that all of our products are safe for children and the environment, and that our equipment is consistently manufactured to the highest-quality standards. In fact, we were the first North American playground equipment manufacturer to be ISO 14001 certified.



To verify product certification, visit www.ipema.org



To verify product certification, visit www.ipema.org

Landscape Structures is a member in good standing of **IPEMA**, the **International Play Equipment Manufacturers Association**. IPEMA is a member-driven, international trade organization that represents and promotes an open market for manufacturers of play equipment.

In the interest of playground safety, IPEMA provides a Third Party Certification Service whereby a designated independent laboratory validates a participant's certification of conformance to ASTM F1487, Standard Consumer Safety Performance Specification for Playground Equipment for Public Use, except sections 7.1.1, 10 and 12.6.1; CAN/CSA Z614, Children's Playspaces and Equipment Standards, except clauses 9.8, 10 and 11; or both. The use of the corresponding logo in the Landscape Structures Inc. catalog signifies that Landscape Structures Inc. has received written validation from the independent laboratory that the product(s) associated with the use of the logo conforms with the requirements of the indicated standards. Check the

IPEMA website (www.ipema.org) to confirm product certification. The use zone and fall height requirements in this publication are shown to ASTM standards. The requirements for other standards may be different. According to the CSA, playground maintenance and inspection is a continuous and integral part of budgetary costs. The cost of inspection and maintenance shall be considered and incorporated into the budget at the time of design, purchase of equipment and installation (11.1.1 Budgeting).

International Play Equipment Manufacturers Association
2207 Forest Hills Drive
Harrisburg, PA 17112
www.ipema.org

The Consumer Product Safety Commission (CPSC) is a governmental organization that provides technical safety guidelines for designing, constructing, operating and maintaining public playgrounds.

U.S. Consumer Product Safety Commission
4330 East West Hwy.
Bethesda, MD 20814
www.cpsc.gov



ASTM International, formerly known as American Society for Testing and Materials, is an international standard organization that develops and publishes voluntary consensus technical standards for a wide range

of materials, products, systems and services. In 1993, the ASTM published "Standard Consumer Safety Performance Specifications for Playground Equipment for Public Use," designation F1487-93. ASTM is more technical than the CPSC. ASTM revised its old standard and published a new standard in 1995, 1998, 2001, 2005, 2007, 2011 and again in 2017.

American Society for Testing and Materials
100 Barr Harbor Dr.
P.O. Box C700
West Conshohocken, PA 19428
www.astm.org

The Canadian Standards Association
Nearly all equipment developed by Landscape Structures is certified to meet CAN/CSA-Z614-14, the Children's Playspaces and Equipment Standard, through IPEMA.



The European Standard was developed by the European Committee for Standardization. The majority of Landscape Structures products have been designed to be TÜV certified by a third-party validator to EN 1176: 2017, the European Standard for Playground Equipment.

Products covered under the scope of the Standard are certified to ASTM F1487, Standard Consumer Safety Performance Specification for Playground Equipment for Public Use,

and Canadian Standards Association (CSA) Standard CAN/CSA Z614, Children's Playspaces and Equipment; or both, except as noted.

Virtually all of the products displayed in this catalog have been certified to be in conformance with the European Standard EN 1176, Parts 1-6 and 11. TÜV Product Service, Danvers, Mass., is the certifying engineering agency for Landscape Structures' products.

The ISO 9001:2015 standard and the ISO 14001:2015 standard provide guidelines for establishing our quality and environmental programs (www.iso.org).



**AISC
CERTIFIED
FABRICATOR**

AISC Certification demonstrates our commitment to building in quality from the beginning. By complying with the rigorous standards established by the most recognized national quality certification program for the structural steel industry, you can feel confident about the superior quality of our SkyWays™ shade products.

SkyWays—our Dallas, Texas-based commercial shade and playground equipment manufacturing facility—has successfully completed its Approved Fabricator Certificate by the IAS-accredited building department of Clark County, Nevada. This certification demonstrates a commitment to top-quality manufacturing processes.



ISO 9001:2015 has a process-oriented structure, is customer focused and emphasizes continuous improvement in quality.



ISO 14001:2015 drives us toward operating in a manner that is environmentally conscious.



Landscape Structures has been approved as an Authorized Provider of continuing education and training by the International Association for Continuing Education and Training (IACET) and the Landscape Architecture Continuing Education System™ (LA CES).



For additional information or copies of our certifications, please contact your Landscape Structures playground consultant.

IPEMA™ is a trademark of the International Play Equipment Manufacturers Association.

Warranty



You Have Our Word More than just a contract, our warranty is our personal commitment that you'll be satisfied with your purchase now and well into the future. As an employee-owned company, we take great pride in the quality of everything we make. And we're so confident that you'll be delighted with your purchase that we back our products with the most comprehensive long-term warranties in the industry. It's just one more way that we show how much we care about our customers and communities.

100-Year Limited Warranty On all PlayBooster®, PlayShaper® and PlaySense® aluminum posts, stainless steel fasteners, clamps, beams and caps against structural failure due to corrosion/natural deterioration or manufacturing defects, and on PlayBooster steel posts against structural failure due to material or manufacturing defects.

20-Year Limited Warranty On all SkyWays® steel posts against structural failure due to material or manufacturing defects.

15-Year Limited Warranty On all Evos® and Weevos® steel arches, all plastic components (including TuffTimbers™ edging), all aluminum and steel components not covered above, Mobius® climbers, Rhapsody® Outdoor Musical Instruments, decks and TenderTuff™ coatings (except Wiggle Ladders, Chain Ladders and Swing Chain) against structural failure due to material or manufacturing defects.

10-Year Limited Warranty On concrete products against structural failure due to natural deterioration or manufacturing defects. Does not cover minor chips, hairline cracks or efflorescence. On SkyWays fabric and thread against failure from significant fading, deterioration, breakdown, mildew, outdoor heat, cold or discoloration.

8-Year Limited Warranty On Aeronet® climbers and climbing cables against defects in materials or manufacturing defects.

5-Year Limited Warranty On Rhapsody® cables and mallets against defects in materials or manufacturing defects, on polycarbonate panels against defects in materials or manufacturing defects, and on bamboo panels against delamination due to defects in materials or manufacturing defects. Does not cover damage which may be associated with the natural characteristics of bamboo aging, including but not limited to discoloration, splitting, cracking, warping or twisting, nor the formation of algae, mold and other forms of fungal-type bodies on bamboo.

3-Year Limited Warranty On all other parts, i.e.: Pulse® products, all swing seats and hangers, Mobius climber handholds, Wiggle Ladders, Chain Ladders and ProGuard™ Swing Chain, Track Ride trolleys and bumpers, all rocking equipment, including Sway Fun® gliders, PVC belting material, HealthBeat® resistance mechanisms, Seesaws, etc., against failure due to corrosion/natural deterioration or manufacturing defects.

For a full text of the warranty, contact your playground consultant or visit playsi.com.

This warranty does not include any cosmetic issues or wear and tear from normal use. It is valid only if the playstructures and/or equipment are erected to conform with Landscape Structures' installation instructions and maintained according to the maintenance procedures furnished by Landscape Structures Inc.

AGES 5-12 YEARS

PLAYBOOSTER®

Bridges & Ramps

Arch Bridge-42" Module	139
Arch Bridge-123" Module	139
Belt Bridge	140
Bridge	140
Clatterbridge	139
Disc Challenge	141
Double-Wide Ramp	142
Grid Walk	140
Ramp	142
S-Disc Challenge	141
SwiggleKnots™ Bridge	141
Swiggle Stix® Bridge	141
TightRope™ Bridge	141

Climbers

ABC Climber	131
Arcade Climber	122
Block Climber	132
Canyon Climber	128
Cascade Climbers	131
Catwalk Climber	134
Centipede Climber	130
Chain Ladder	133
Chimney Climb Across™ 24" Deck Difference	123
Chimney Climb Across Straight	123
Chimney® Climber	123
Cliff Climber	127
Climbing Wall	133
Conical Climber™	131
Corkscrew Climber	130
Corner Climber™	131
Cozy Climber™	134
Crest Climber	125
Croquet Climber	128
Deck Link	134
Dot-to-Dot Climber	122
Double Wave Climber	129
Fish Net Climber	133
Flex Climber	125
Funnel Climber™	125
JigJag Climber	127
Logo Climber	128
Lollipop Climber	128
Loop Arch Climber	129
Loop Ladder	129
Loop Pole	130
Manta Ray Climber®	125
Mini-Summit Climber	132
O-Zone® 3-Ring Climber	126
Panel Vertical Ladder	131
Pod Climber®	132
Portal Climber	124
Ring Tangle® Climber	127
Seeker Climber	124
Shockwave Climber	122
Single Wave Climber	129

Sky Rail Climber	130
Sling Shot Climber™	126
Snake Climber	129
SpaceLink Climber™	126
SpaceWalk Climber™	124
Spider Web Climber	133
Spiral Climber	127
Starburst™ Climber	127
Star Seeker Climber	126
Step Deck	134
Step Ladder	134
Summit Climber™	132
Sunbeam Climber	128
Thunderhead Climber®	132
Traveler Climber	124
Vertical Ascent® Climber	131
Vertical Ladder	130
Wiggle Ladder	133

Decks

3-Sided Extension Deck	158
90° Triangular Deck (Tri-Deck)	158
Curved Transfer Module	158
Hexagon Deck	158
Hexagon Deck with Extension	158
PlayOdyssey® Octagonal Deck	158
Square Corner	158
Square Deck	158
Square Extension	158
Transfer Station	158
Triangular Deck (Tri-Deck)	158
Triangular Extension	158

Enclosures

Alphamaze and Labyrinth Vibe Panel™	147
Balcony Deck	150
Ball Maze Panel	148
Bongo Panel®	145
Bongo Reach Panel	151
Braille and Clock Panel	146
Bubble Panel	144
Chimes Panel	145
Chimes Reach Panel	151
Color Splash Panel™	147
Curbs	151
DigiFuse® Barrier Panel	149
DigiFuse Barrier Panel with Medallions	149
DigiFuse Bubble Panel	149
DigiFuse Hole Panel	149
DigiFuse Periscope Panel	149
Driver Panel	152
Finger Maze Panel	147
Fun Mirror Panel®	146
Gear Panel	148
Hole Panel	152
Hourglass Panel	148

House Panel	150
Image Panel	148
Image Reach Panel	151
Kaleidospin Panel®	147
Marble Panel®	145
Match 3 Reach Panel	151
Match 4 Panel	148
Mirror Panel	146
Navigator Reach Panel	151
Optigear Panel®	147
Periscope Panel	146
Periscope Reach Panel	151
Pilot Panel	150
Pipe Guardrail/Barrier	150
Rain Sound Wheel Panel™	145
Ring-a-Bell™ Panel	145
Ring-a-Bell Reach Panel	151
Rock-n-Ring® Panel	145
Sand and Water Panel	152
Sign Language Panel	146
Slant Entrance Panel	152
Slant Window Panel	144
Space Travel Panel	150
Storefront Panel	152
Table Panel	146
Tic-Tac-Toe Panel	148
Tracing Panel	147
Trail Tracker® Reach Panel	151
Window Vibe Panel™	144
Wire Barrier	150
Xylofun Panel®	145
Zoo Panel	150

GeoPlex®

3-Spoke Tower	100
3-Spoke Tower with Cables	100
5-Post Tower	99
5-Post Tower with Cables	99
GeoPlex 84" Deck- to-Deck Climber	102
GeoPlex 123" Deck- to-Deck Climber	101
GeoPlex Climber	102
GeoPlex Double Panel or Triple Panel	102
GeoPlex Ground-to-Deck Double Climber	101
GeoPlex Ground-to-Deck Triple Climber	101
GeoPlex Labyrinth Climber	103
GeoPlex Navigator Climber	103
GeoPlex Trailblazer Climber	103

* NEW PRODUCT

Motion & More Fun

Accessible Stationary Cycler	153
Blender™ Spinner	154
Boogie Board™	154
Chinning Bar	155
E-Pod® Step	155
Grab Bar	155
Gyro Twister® Spinner	154
Handhold/Leg Lift	155
Log Roll	153
Loop Seat	155
Parallel Bars	154
Playstructure Seat	155
Sol Spinner™	154
Stationary Cycler	153
Sway Fun® Glider	153
Talk Tubes	154
Turning Bar	155

Nature-Inspired Play

AdventureScapes® Climbers	113
Canyon Corkscrew Net with Rock	111
Canyon High Wire Net with Rock	111
Corkscrew Climber with Recycled Wood-Grain Handholds	115
Discovery Tree Climb™	115
Facet™ Stepper	112
Firepole with Recycled Wood-Grain Handholds	114
Log Balance Beam	116
Log Stack Climber	114
Log Steppers	114
Loop Pole with Recycled Wood-Grain Handholds	115
Mushroom Steppers	114
Pine Tree Accent Topper	116
Recycled Tree House Roof Recycled Wood-Grain Panel	116
SlideWinder2® with Tree Branch Support	114
The Ascent® Rock Climber	110
The Bend® Rock Climber	110
The Canyon Collection® Formations 1-4	110
The Chimney/The Den Rock Climber	111
The Chimney® Rock Climber	111
The Den® Rock Climber	111
The Peak™ Rock Climber	112
The Pinnacle™ Rock Climber	112
The Pointe™ Rock Climber	112
The Stepper™ Rock Climber	112

Tree Stump Transfer Module	116
Wood Plank Wiggle Ladder	115
Netplex®	
Netplex 7-Post	105
Netplex 13-Post	105
Netplex 14-Post	104
Disc Net™ Climber	106
Disc Net Climber with Double Swoosh Slide®	106
Skyport™ Climber	107
Skyport Climber with Double Swoosh Slide	107
Watermill™ Climber	107

Overhead Events

90° Horizontal Ladder	136
Air Dancer™ Overhead Event	137
C-Horizontal Ladder	136
Circular Horizontal Ladder	136
D-Ring with Stainless Steel Bolt Link	138
Horizontal Ladder	135
LolliLadder™	135
Overhead Parallel Bars	135
Overhead Trekker™ Ladder	135
Ring-a-Ling™ Overhead Event	138
Ring Bridge	138
Ring Pull	138
S-Horizontal Ladder	136
Single Beam Loop Horizontal Ladder	136
Swing Out™ Overhead Event	137
Track Rides	137
Trapeze Horizontal Ladder	135
Triple Ring Fling™ Overhead Event	137
Wave Horizontal Ladder	136

PlayOdyssey® Towers

10' PlayOdyssey Tower	108
12' PlayOdyssey Tower	108
12' Tower Bubble Panel	108
12' Tower Pipe Barrier	108
Tower El Slide	109
Tower Gemini SlideWinder2	109
Tower SlideWinder2	109
Tower TurboTwister™ Tunnel Slide	109
Tower WhooshWinder® Slide	109

Roofs

Arch Roof	156
CoolToppers® Full Sail	156
CoolToppers Single Post Pyramid Roof	156

CoolToppers Wave	156
Hex Shingle Roof	157
PlayOdyssey Roof	157
Recycled Peak Roof	157
Square Peak Tile Roof	157
Square Poly Roof	157
SteelX® Hex Roof	157
SteelX Square Roof	157
Super-Square Shingle Roof	157
Vibe® Roof	156

Slides

Cloudburst® Slide	117
Double Slide	117
Double Swirl Slide	117
Double Swoosh Slide	117
Double Wave Slide	117
El Slide	119
Firepole	119
Gemini SlideWinder2	118
Ribbon Slide	117
Rollerslide	119
Rush™ Slide	118
Rushwinder	118
Single Slide	119
Single Wave Slide	119
SlideWinder2	118
SpyroSlide™	119

Stainless Steel Double Slide	120
Stainless Steel Slide	120
Stainless Steel Spiral Slide	120
Stainless Steel Surf Slide	120
Stainless Steel Wave Slide	120
Surf Slide	120
Tunnel Slide	119
TurboTwister Tunnel Slide	119
WhooshWinder Slide	118

Tunnels

90° Crawl Tunnel	143
C-Crawl Tunnel	143
Offset Crawl Tunnel	143
S-Crawl Tunnel	143
Straight Crawl Tunnel with Optional View Tubes	143
Wire Crawl Tunnel	143

EVOS®**Bridges**

PodStomper® Bridge	163
Swiggle Stix™ Bridge	163

Climbers

BalanceWinder™ Climber	162
Belt-Zone™ Climber	161
Crescent Climber®	161
Helix Net® Climber	162
O-Zone Climber	161
Ring Tangle Climber	162

Eclipse® Net Plus 159**Motion & More Fun**

Accessible Power Lifter™ Chinning Bar	165
Accessible Reach Panels	164
Blender™ Spinner	164
Chatter Noodle® Talk Tubes	164
Cycler	165
E-Pod® Step	165
Gyro Twister® Spinner	164
Noodle Pod® Steps	165
Power Lifter™ Chinning Bar	165
Sol Spinner™	164
TwirlWind™ Turning Bar	165
Wobble Pod® Bouncer	165

Overhead Events

ArcOver® Ladder	163
Bow Ladder®	163
Overhead Trekker Ladder	163

Slides & Gliders

Hang Glider®	160
Rush Slide	160
Rushwinder	160
Stainless Steel Surf Slide	160
Surf Slide	160

AGES 2-5 YEARS**PLAYSHAPER®****Bridges & Ramps**

Arch Bridge	174
Belt Bridge	174
Ramp	174

Climbers

ABC Climber	172
Block Climber	172
Conical Climber™	171
Cozy Climber™	172
Crittter Canyon	171
Deck Link	173
Loop Arch Climber	173
Loop Ladder	173
Mini Summit Climber®	172
Pod Climber®	172
Step Deck	173
Step Ladder	173
Thunderhead Climber®	171
Wiggle Ladder	173

Decks

90° Triangular Deck	183
Curved Transfer Module	183
Square Corner	183
Square Deck	183
Square Extension	183
Transfer Station	183

Enclosures

Balcony Deck	177
Ball Maze Panel	178
Bongo Panel™	177
Braille and Clock Panel	179
Bubble Panel	179
Chimes Panel	177
Color Splash Panel™	178
DigiFuse Barrier Panel	176
Driver Panel	181
Finger Maze Panel	179
Fun Mirror Panel®	178
Gear Panel	178
Hole Panel	179
Hourglass Panel	178
House Panel	180
Image Panel	180
Kaleidospin Panel®	178
Marble Panel®	177
Match 4 Panel	180
Mirror Panel	178
Navigator Reach Panel	181
Optigear Panel®	178
Periscope Panel	178
Pilot Panel	181
Rain Sound Wheel Panel™	177
Ring-a-Bell™ Panel	177
Rock-n-Ring® Panel	177
Sand and Water Panel	180
Sign Language Panel	179
Slant Entrance Panel	179
Slant Window Panel	179
Space Travel Panel	179
Storefront Panel	180
Table Panel	180
Tic-Tac-Toe Panel	180
Tracing Panel	181
Trail Tracker® Reach Panel	179
Wire Barrier	180
Xylofun Panel™	177
Zoo Panel	180

Motion & More Fun	
Chinning Bar	181
Handloop	181
Talk Tubes	181
Nature-Inspired Play	
Facet Stepper™	167
Log Stack Climber	168
Log Steppers	167
Mushroom Steppers	167
Recycled Tree House Roof Recycled Wood-Grain Panel	168
The Peak Rock Climber	167
The Stepper Rock Climber	167
Tree Stump Transfer Module	168
Wood Plank Wiggle Ladder	167
Overhead Events	
Horizontal Ladder	174

Roofs

Arch Roof	182
Square Peak Tile Roof	182
Square Poly Roof	182
Super-Square Shingle Roof	182

Slides

Curved Slide	169
Double Slide	170
Double Swirl Slide	170
Double Wave Slide	170
El Slide	169
Gemini SlideWinder2	170
Lava Run Slide	170
Single Slide	169
SlideWinder2	169
SpyroSlide	169
Stainless Steel Double Slide	170
Stainless Steel Slide Tunnel Slide with Optional View Tubes	169

Tunnels

90° Crawl Tunnel	175
C-Crawl Tunnel	175
Offset Crawl Tunnel	175
S-Crawl Tunnel	175
Straight Crawl Tunnel with Optional View Tubes	175
Wire Crawl Tunnel	175

WEEVOS®**Bridges**

Boppity Bridge®	185
Swiggle Stix™ Bridge	185

Climbers

Giggle Jiggler® Climber	184
Wee Planet™ Climber	184
Wee Pod® Climber	184

Motion & More Fun

Alphamaze Panel® and Labyrinth Panel	187
Bongo and Alphamaze Panel®	187
Bongo and Xylofun Panel®	187
Bongo Panel®	187
Chitter Chatter Noodle® Talk Tubes	187
Color Splash Panel®	186
Fun Mirror Panel™	186
Kaleidospin Panel®	186
Marble Panel®	186
Optigear Panel®	186
Rain Sound Wheel Panel	187
Twirly Bar	187
Xylofun and Alphamaze Panel®	187
Xylofun Panel®	187

Slides
Cozy Coaster* Slide 184

Tunnels
Wee Crawl* Tunnel 185

AGES 6-23 MONTHS

Climbers
Crittter Canyon 189

Enclosures
Bead and Block Panel 190
Geometric Panel 190

Learning Wall 191

Motion & More Fun
Infant Balance Bar 191

Slides
Infant Single Slide 189

Tunnels
Crawl Tunnel to 6" Deck 190
Straight Crawl Tunnel with
Optional View Tubes 190
Wire Crawl Tunnel 190

SMART PLAY

Centre 196
Cube 195
Fire Station 197
Fire Station + Market Cafe 200
Loft 199
Loft + Fire Station 200
Loft + Market Cafe 200
Market Cafe 198
Motion 194
Nook 201
Venti* 193

HEDRA™

Hedra * 203
Hedra™ Scout * 205

FREESTANDING PLAY

Aeronet® Climbers
Aeronet Seats 238
Eclipse Net Climber 238
Lunar Blast® Net Climber 238
Lunar Burst® Net Climber 238

Climbers
Block Climbers 242
Cascade Climbers 240
Climbing Wall 242
Funnel Climber 239
GeoPlex® Climbing Wall 240

Hemisphere Climber* 239
Humpty Climbers 240
JigJag Climbers 241
Noodle Pod Steps 242
Pod Climber 242
Rainbow Climbers 241
Sky Rail Climber 241
Spider Web Climber 239
Starburst® Climbers 240
Star Seeker Climber 239
Vertical Pipe Climbers 241
Wee Planet™ Climber 242

Facet™ Forms
Facet Balance Beam 236
Facet Crawl Tunnel 236
Facet Crawl Tunnel with
Stepper 236
Facet Steppers 236

Motion & More Fun
Accessible SuperScoop 223
Blender Spinner 218
Bobbie Rider™ 225
Boogie Board 221
Chill* Spinner 216
Curva* Spinner 216
Custom Spring Riders 225
Cycler 222
DigiRider* 224
Flywheel* Spinner 219
Global Motion* 217
Gyro Twister Spinner 218
Log Roll 222
OmniSpin* Spinner 219
Saddle Spinner 219
Seesaw Back Support 226
Seesaws 226
Sol Spinner 218
Spring Platform with Post
or Accessible Handhold 221
Spring Pod™ Bouncer 222
Stand-Up Seesaw 226
Stand-Up Spinner 218
Stationary Cycler 222
SuperScoop 223
Sway Fun* Glider 223
TopsyTurny* Spinner 216
Track Rides 221
We-Go-Round* 215
We-saw™ 226
Whimsy Rider™ 225
Wobble Pod Bouncer 222
ZipKrooz* 220
ZipKrooz Assisted 220

Mobius® Climbers 237

Nature-Inspired Play
AdventureScapes®
Climbers 235
Fossil Dig 233
Log Balance Beam 232
Log Crawl Tunnel 232

Log Steppers 232
Mushroom Steppers 232
The Peak Rock Climber 233
The Pinnacle Rock Climber 234
The Pointe Rock Climber 234
The Stepper Rock Climber 233

**Rhapsody® Outdoor
Musical Instruments**
Animato* 213
Cascata* Bells 212
Ditty™ 214
Goblet Drum 213
Goblet Drum Junior 214
Grandioso* 213
Jingle* 214
Kettle Drum 213
Kettle Drum Junior 214
Kundu Drum 213
Kundu Drum Junior 214
Tongue Drum 212
Tongue Drum Junior 214
Vibra* Chimes 212
Vivo* 213
Warble* 214

Sensory Play
Alphamaz Panel and
Labyrinth Panel 246
Bongo and
Alphamaz Panel 246
Bongo and Xylofun Panel 246
Bongo Panel 246
Chatter Noodle® Talk Tubes 244
Clear Paint Panel 247
Color Splash Panel 245
Cozy Dome* 244
Crawl Tunnels 247
Elevated Sand Table 247
Fun Mirror Panel 245
Imagination Table™ 246
Kaleidospin Panel 245
Marble Panel 246
Navigator Reach Panel 244
Optigear Panel 245
Pulse* Table Tennis 243
Pulse Tempo 243
Pulse Tennis 243
Rain Sound Wheel Panel 246
Roller Table™ 244
Sandbox 247
Sensory Play Center* 245
Splash Circuit™ Sand
and Water Station 247
Trail Tracker Reach Panel 244
Turtle Sand Table 247
Wiggle Worm
Crawl Tunnel 247
Xylofun and
Alphamaz Panel 246
Xylofun Panel 246

Slides
40" Poly Slide 227
Rushwinder 227
SpyroSlide 227
Wave Poly Slide 227

Structures
Alpha Link® Towers 210
Alpha Link Towers AUS 211
Alpha Link Towers EN 211
Alpha Link Towers TT 210
Alpha® Tower 210
Alpha Tower AUS 211
Alpha Tower EN 211
Alpha Tower TT 210
Crab Trap* 207
Super Netplex®
8' Single Tower * 208
Super Netplex
8' to 12' Towers * 209
Super Netplex
12' Single Tower * 208
Super Netplex
12' Double Towers * 209

Swings
5000 Series Swing Frame 229
Arch Swing Frame 229
Arch Tire Swing 229
Flat Molded Seat 231
Friendship™ Swing 228
Full-Bucket Infant Seat 230
Full-Bucket Seat 230
Half-Bucket Seat 230
Molded Bucket Seat 231
Molded Bucket Seat (2-5)
with Harness and Chains 231
Molded Bucket Seat (5-12)
with Harness and Chains 231
Oodle® Swings 228
Single Post Swing Frame 229
Slash-Proof Belt Seat 231
Swing Chain 231
TenderTuff™-Coated
Swing Chain 231
Toddler Swing Add-On 230
Toddler Swings 230

FITNESS

FitCore™ Extreme
A-Frame Cargo Net 251
Angled Balance Beam 249
Angled Overhead Ladder 251
Globe Grasp 253
High Step 252
Jump Hang 252
Ledge Hanger 253
Over Under Bars 250
Peg Bridge 253

Quintuple Steps 252
Rope Climb 250
Spider Walk 250
Unstable Bridge 252
Vertical Cargo Net 249
Wheel Bridge 253
Welcome Sign 249

**HealthBeat® Outdoor
Fitness System**
Ab Crunch/Leg Lift 255
Assisted Row/Push-Up 255
Balance Steps 257
Cardio Stepper 257
Chest/Back Press 255
Elliptical 256
Hand Cycler 256
Mobility 257
Parallel Bars 256
Plyometrics 256
Pull-Up/Dip 255
Squat Press 257
Stretch 254
Tai Chi Wheels 257
Welcome Sign 254

More Fitness
Chin-Up 259
Curved Balance Beam 258
Drop Shot 258
Handhold/Leg Lift 259
Horizontal Ladder Station 259
Jump Touch 258
Parallel Bar 259
Power Lifter Chinning Bar 258
Sit-Up/Push-Up Bench 259
Spring-Up 259
Step-Up 258

SITE FURNISHINGS

Designer Collection
Arches Bench 261
Arches Bike Rack 261
Arches Litter Receptacle 261
Arches Recycling
Receptacle 261

Facet Forms
Facet Bench 261

**Nature-Inspired
Collection**
Acorn Seat 263
Arm Rest 262
Leaf Bike Rack 263
Litter Receptacle 263
Log Bench 263
Poly Picnic Table 262
Recycled Contour
Series Bench 262
Toddler Picnic Table 262

Wood-Grain Bench 262
Wood-Grain Litter
Receptacle 263
Wood-Grain Recycling
Receptacle 263

Signs
DigiFuse® Warning Plates * 268
Personalized Signs 268
Playground Welcome/
Safety Sign 268

**SkyWays® and
CoolToppers
Shade Products** 266

Surfacing
PebbleFlex™ Safety
Surfacing 269
TuffTimbers™
Access Wedge 269
TuffTimbers Edging 269

Vivid Collection
Kaleidoscope Bench 264
Kaleidoscope Litter
Receptacle 264
Kaleidoscope Recycling
Receptacle 264
Loop Rack 265
Square Picnic Table 265
TenderTuff Bench 265
TenderTuff Litter
Receptacle 265
TenderTuff Picnic Table 265

* NEW PRODUCT



Landscape Structures Inc.
601 7th St. South
Delano, MN 55328-8605
763.972.5200
888.438.6574
playsi.com



MIX
Paper from
responsible sources
FSC® C102835

Because of our commitment to safety, innovation and value, we reserve the right to change product specifications at any time.
© 2020 Landscape Structures Inc.
Printed in the U.S.A. 750-2141

